

# Release Notes coupler Firmware EtherCAT

## For CM579-ETHCAT / PM595-4ETH (-XC)

ABB Automation Products GmbH  
Wallstadter Str. 59  
68526 Ladenburg, Germany  
Telephone: +49 62 21 701 1444  
Fax: +49 62 21 701 1382  
Email: [plc.sales@de.abb.com](mailto:plc.sales@de.abb.com)  
Internet: [www.abb.com/plc](http://www.abb.com/plc)

Firmware 4.4.0.20 for EtherCAT master couplers

### General purpose

The firmware version is capable to run on the following hardware variants:

- CM579-ETHCAT **1SAP170902R0001**
- CM579-ETHCAT **1SAP170902R0101**
- PM595 internal couplers **1SAP155500R0279**
- PM595 internal couplers **1SAP351500R0279**

### Changes in this version

- Allow ENI files (configuration file) up to 2 MB to allow larger EtherCAT networks
- Stability improvements for sync mode (together with acyclic services)

### Installation (Download) pre-requisite:

To download this firmware to a CM579-ETHCAT an AC500 CPU with firmware V2.4.0 or higher is needed.

To download this firmware to a PM595 internal coupler the PLC firmware must be at least V2.5.0

The installation / download of this firmware should be performed via an SD-Card.

- Attached are two SD Card images:
  - SD Card image to update up to 4 external coupler CM579-ETHCAT to firmware version V4.4.1.20
    - [SD-Card\\_create\\_CM579-ETHCAT\\_V4\\_4\\_1\\_20.exe](#)
  - SD Card image to update both internal coupler of PM595 to firmware version V4.4.1.20
    - [SD-Card\\_create\\_PM595-ETHCAT\\_V4\\_4\\_1\\_20.exe](#)

## Update using SD-Card:

If the update has to be done using a SD-Card, the SD card image files are creating the needed update directory on a formatted SD-Card.

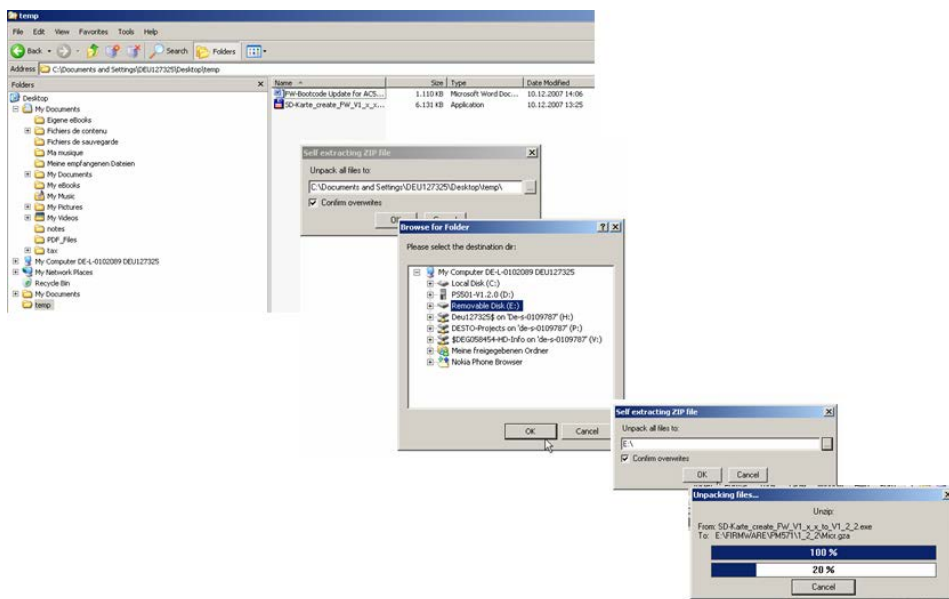
- Put the SD-Card into the SD-Card reader from your PC.
- After that, select the SD-Card image data corresponding of the product to be updated (e.g. CM579-ETHCAT or PM595-4ETH)

“SD-Card\_create\_CM579-ETHCAT\_V4\_4\_1\_20.exe”

or

“SD-Card\_create\_PM595-ETHCAT\_V4\_4\_1\_20.exe”

- With double click. The file is automatically extracted; select the SD-Card as target.



- Select the SD-Card reader/writer root directory to extract the file.

- And click on OK Button, the program will generate the file structure on the SD-card and copy all the needed files in the corresponding directories

Perform then the update as described into the AC500 User manual.

## Update using Automation Builder software:

If the update or change of protocol feature from Automation Builder shall be used this is possible by replacing the current delivered firmware version with this version V4.4.1.2. Therefor the following steps are necessary:

- Close all Automation Builder instances
- Navigate to the folder were the firmware files for the Automation Builder are installed:
  - For AB 1.2.x or profile 1.2 (for external CM579-ETHCAT and PM595 internal coupler):  
“C:\ProgramData\AutomationBuilder\AC500\_Firmware\_1.2\Coupler”
  - For AB 1.1.x or profile 1.1 (only for external CM579-ETHCAT):  
“C:\ProgramData\AutomationBuilder\AC500\_Firmware\_1.1\Coupler”
- In the folders “CM579-Ethercat” and / or “CMETHECM” create a new folder named “4\_4\_1\_20”
- Copy the firmware file to the newly created folders
- In the folders “CM579-Ethercat” and “CMETHECM” delete all folders containing other firmware files than 4\_4\_1\_20
- Restart Automation Builder