

AC500 – S500 EDS
configurator installation

AC500 / S500

EDS Configurator
installation instructions

AC500-S500 EDS Configurator for DC505-FBP on CANopen or DeviceNet



Content

1. Assumptions, restrictions and dependencies	3
2. Extract the ZIP data file.....	4
3. Install the EDS configurator software tool	5
4. Start the EDS configurator software tool	6

1. Assumptions, restrictions and dependencies

The following software tool is only to be used together with DC505-FBP and S500 IO modules, CANopen or DeviceNet FieldBusPlug and AC500 CPU with FW V1.xx.

ATTENTION !

The EDS configurator software tool V1.1.04 **cannot be used** with **AC500 CPU FW V2.x and higher!**

ATTENTION !

The EDS configurator software tool V1.1.04 **cannot be used** with **PS501 Control Builder Plus software V2.x and higher**

ATTENTION !

The EDS configurator software tool V1.1.04 **can only be used** with DC505-FBP communication interface module using a CNAopen or DeviceNet FieldBusPlug and S500 IO modules. The software tool generates EDS configuration data for slave configuration.

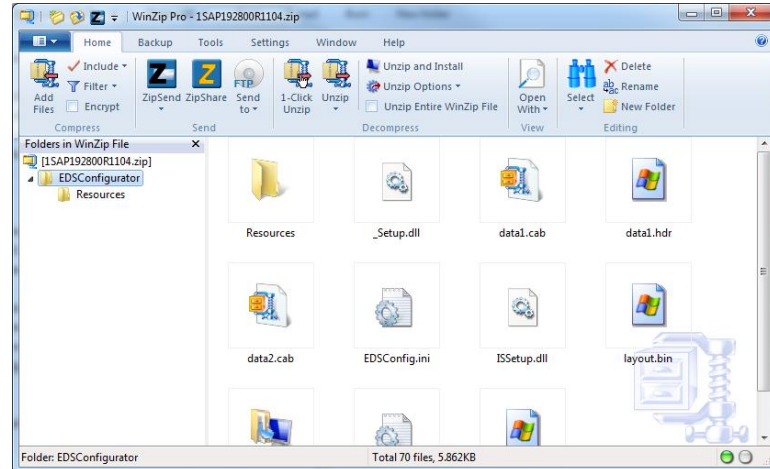
NOTE !

The EDS configurator software tool V1.1.04 **can only be used** with AC500 CPU with FW version V1.x and PS501 Control Builder Plus V1.xx. The configuration of the CANopen / DeviceNet master coupler (CM575-DN or CM578-CN) has to be realized using SYCON.net only.

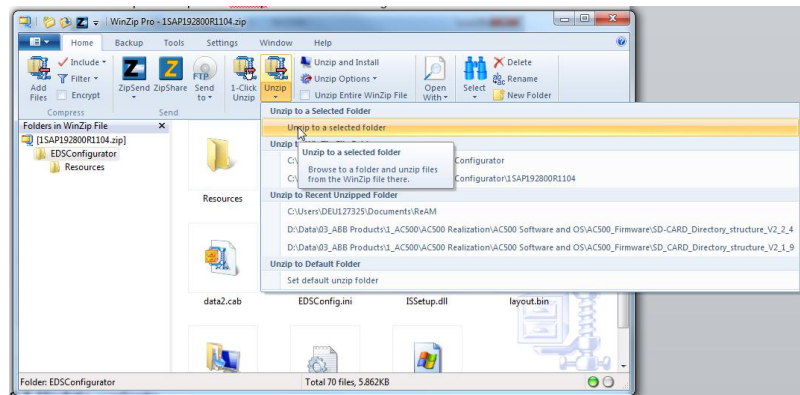
2. Extract the ZIP data file

Once the **1SAP192800R1104.zip** file has been downloaded from the www.abb.com/plc website, the zip file has to be extracted and the needed components to be copied into a temporary directory.

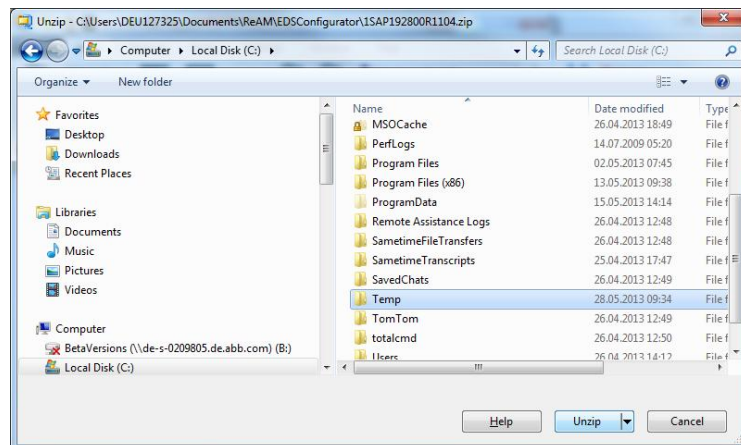
Double-click on the zip file will open the Winzip software for extracting the files:



Select the **EDSConfigurator** directory in Winzip software and click on Unzip:



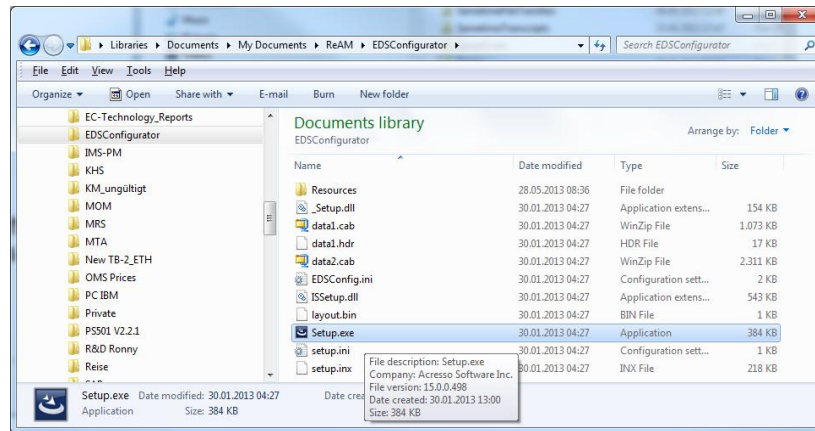
Then select to desired directory for extracting the software components and click Unzip:



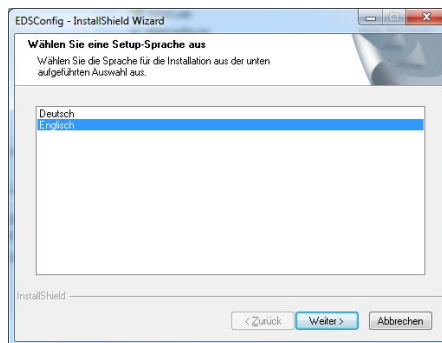
The software components have been copied into the temporary directory, the EDS configurator software tool has to be installed.

3. Install the EDS configurator software tool

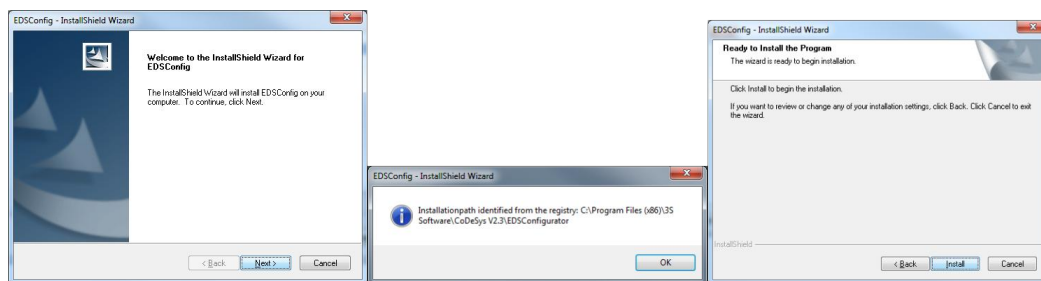
In the temporary directory, select the installation file by double clicking on **Setup.exe** file:



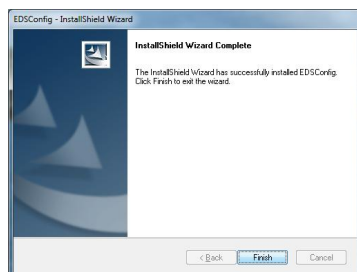
The installation program starts and you should select the desired language for the software tool,



Click then on Weiter and the installation will continue. Click always on Next, OK or Install to go further with the default installation.

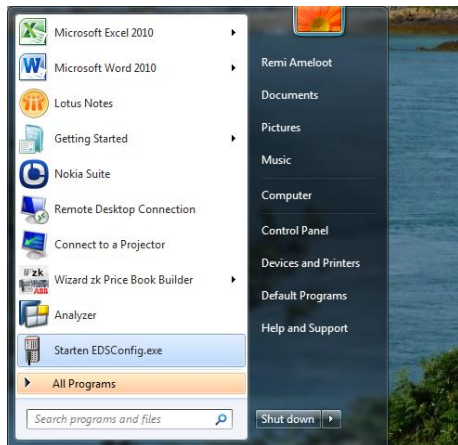


When the installation is finished please click on Finish:



4. Start the EDS configurator software tool

To start the EDS Configurator software tool, click on: “Start the EDS Config.exe”



The software is started and you can create your EDS configuration file for DeviceNet or CANopen protocols together with DC505-FBP and S500 IO modules.

