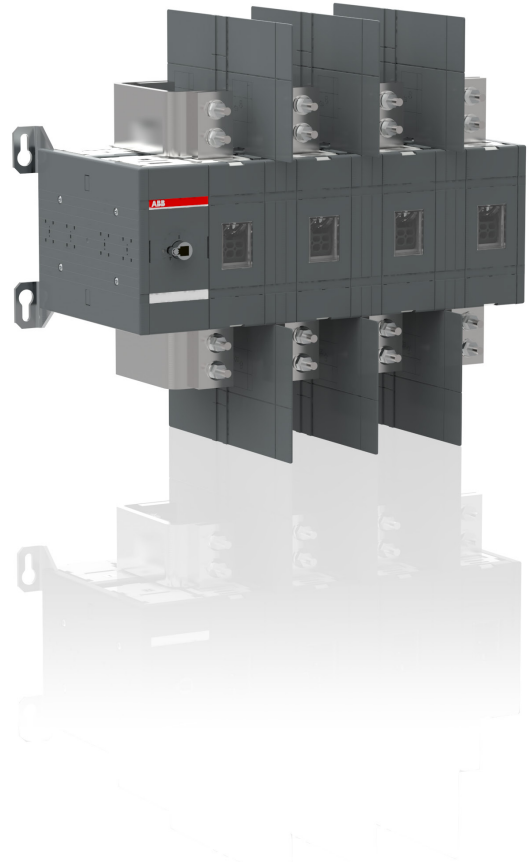
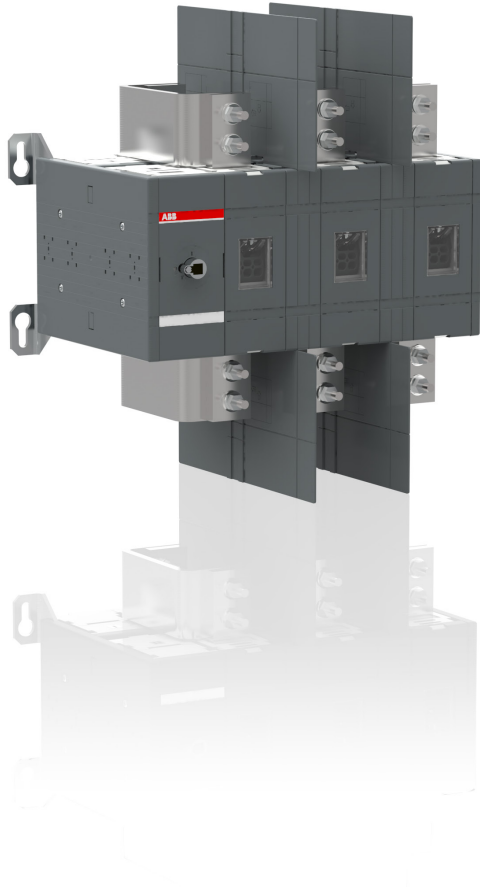


OT Non-fusible Disconnect Switches 1600...2000 Amperes



Reliable in extreme
conditions



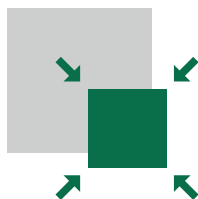
Suitable for heavy duty applications at full rated current

OT disconnect switches have a short circuit rating of 100kA at 600V and the full general use current ratings at 600Vac and 250Vdc.

Excellent insulation

Reduced risk of arcing between phases in even the most severe circumstances and environments.

Space saving



Modular design

Flexibility in design allows for space saving configurations.

Easy to install



Flexible installation

Mounting is possible in any orientation: horizontal, vertical or even on the ceiling.

Reduced installation time

For external handles, the shaft is adjustable at different installation depths. Key hole mounting feet and snap-on mounting of auxiliary contacts make installation easy and fast.

Technical data

Non-fusible disconnect switches OT1600...2000U

| Technical data according to UL98/CSA 22.2 No. 4, cULus Listed Open type switch, File E101914 | | | | |
|--|--------------------------------------|--------------------|---------------------|---------------------|
| Switch size | | | OT1600U | OT2000U |
| General Use AC ratings -40 to +40°C | pf=0.7...0.8 Single and three phase | A | 1600 | 2000 |
| Voltage rating | | V | 600 | 600 |
| Maximum General Use DC Ratings | | 250Vdc | 1600 | 2000 |
| Short circuit rating with fuse | Fuse type L | kA | 100 | 100 |
| | | A | 2000 | 2000 |
| Minimum electrical endurance pf. 0.75...0.8 | | Oper.cycles | 500 | 500 |
| Mechanical endurance | Divide by two for operation cycles | Oper. | 2500 | 2500 |
| Gross/ net weight without handle, shaft and accessories | 2-pole switch | kg - lb | 37/34 - 81.6/75 | 37/34 - 81.6/75 |
| | 3-pole switch | kg - lb | 52/49 - 114.6/108 | 52/49 - 114.6/108 |
| | 4-pole switch | kg -lb | 69/65 - 152.1/143.3 | 69/65 - 152.1/143.3 |
| Standard shaft and mounting depth | Square dimension x lenght of shaft | mm / in | 12x185 / 0.47x7.3 | 12x185 / 0.47x7.3 |
| | Corresponding mounting depth | mm / in | 358-444 / 13.6-16.8 | 358-444 / 13.6-16.8 |
| Standard handle | | Type | OHB 274J12 | OHB 274J12 |
| Terminal bolt size | Metric thread diameter x lenght | mm | M12x60 (included) | M12x60 (included) |
| Terminal bolt tightening torque | Counter torque required | Nm / lb.in | 50 / 443 | 50 / 443 |
| Optional terminal lug kits (kit includes 6 lugs) | | Qty/ switch x type | 2x OZXA-1200 | 2x OZXA-1200 |
| | | Wire range | 2x 4x2-600MCM | 2x 4x2-600MCM |
| Torque | Wire tightening | Nm / lb.in | 56 / 500 | 56 / 500 |
| | Lug mounting | Nm / lb.in | 50 / 443 | 50 / 443 |
| Operating torque | Typical for 2, 3 and 4-pole switches | Nm / lb.in | 75 / 663 | 75 / 663 |
| Minimum enclosure dimensions | Height x Width x Depth | mm | 1000x800x450 | 1000x800x450 |
| | | in | 39.4x31.5x17.7 | 39.4x31.5x17.7 |

Type designation key

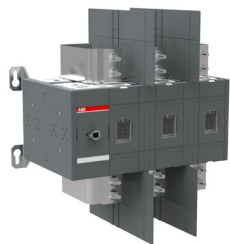
Explanation of the types

| | | | | |
|----|------|---|----|---|
| OT | 2000 | U | 03 | P |
| 1 | 2 | 3 | 4 | 5 |

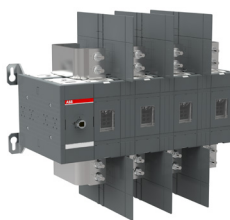
| | |
|-----|--|
| 1 | Brand |
| OT: | ABB non-fusible disconnect switch brand |
| 2 | Switch size / Ampere rating |
| | 1600: 1600 A |
| | 2000: 2000 A |
| 3 | Mounting / Construction/ Standard |
| U: | Front operated, base mounting, UL/CSA |
| 4 | Number of poles and placing of the operating mechanism |
| 03: | 3-poles, operating mechanism at the left end of the switch |

| | |
|--------|--|
| 04: | 4-poles, operating mechanism at the left end of the switch |
| 12: | 3-poles, operating mechanism between the poles |
| 22: | 4-poles, operating mechanism between the poles |
| 5 | Included handle and shaft |
| Blank_ | No accessories included |
| P: | External handle and shaft |
| K: | Direct mount handle |

Ordering information



OT1600...2000U03



OT1600...2000U04

Non-fusible disconnect switches, base mounting, UL/CSA

Handle and shaft need to be ordered separately. Terminal bolts M12X60 included.

| Number of poles | Amp rating [A] | Type | Order number | Weight/ unit [kg - lb] |
|-------------------------------------|----------------|------------|-----------------|------------------------|
| Switch only | | | | |
| 2 | 1600 | OT1600U02 | 1SCA144197R1001 | 37 - 81.6 |
| 3 | 1600 | OT1600U03 | 1SCA144198R1001 | 52 - 114.6 |
| 4 | 1600 | OT1600U04 | 1SCA144199R1001 | 69 - 152.1 |
| 3 | 1600 | OT1600U12 | 1SCA144200R1001 | 52 - 114.6 |
| 4 | 1600 | OT1600U13 | 1SCA144201R1001 | 69 - 152.1 |
| 4 | 1600 | OT1600U22 | 1SCA144202R1001 | 69 - 152.1 |
| 2 | 2000 | OT2000U02 | 1SCA144203R1001 | 37 - 81.6 |
| 3 | 2000 | OT2000U03 | 1SCA117313R1001 | 52 - 114.6 |
| 4 | 2000 | OT2000U04 | 1SCA117316R1001 | 69 - 152.1 |
| 3 | 2000 | OT2000U12 | 1SCA117332R1001 | 52 - 114.6 |
| 4 | 2000 | OT2000U13 | 1SCA117336R1001 | 69 - 152.1 |
| 4 | 2000 | OT2000U22 | 1SCA117334R1001 | 69 - 152.1 |
| Switch with handle and shaft | | | | |
| 2 | 1600 | OT1600U02P | 1SCA144206R1001 | 38 - 83.8 |
| 3 | 1600 | OT1600U03P | 1SCA144207R1001 | 53 - 116.9 |
| 4 | 1600 | OT1600U04P | 1SCA144208R1001 | 70 - 154.3 |
| 3 | 1600 | OT1600U12P | 1SCA144209R1001 | 53 - 116.9 |
| 4 | 1600 | OT1600U13P | 1SCA144210R1001 | 70 - 154.3 |
| 4 | 1600 | OT1600U22P | 1SCA144211R1001 | 70 - 154.3 |
| 2 | 2000 | OT2000U02P | 1SCA144212R1001 | 38 - 83.8 |
| 3 | 2000 | OT2000U03P | 1SCA117314R1001 | 53 - 116.9 |
| 4 | 2000 | OT2000U04P | 1SCA117317R1001 | 70 - 154.3 |
| 3 | 2000 | OT2000U12P | 1SCA117333R1001 | 53 - 116.9 |
| 4 | 2000 | OT2000U13P | 1SCA117337R1001 | 70 - 154.3 |
| 4 | 2000 | OT2000U22P | 1SCA117335R1001 | 70 - 154.3 |

Ordering information



OHB200J12P



OHB274J12

Pistol handles

Padlockable with three padlocks in OFF-position. Door interlock in ON-position. Door interlock in OFF-position when the handle is padlocked. Screw fixing from the back side of the handle. No screws on the front ensures double insulation.

| Colour | Handle lenght [mm - inch] | Type | Order number | Weight/ unit [kg - lb] |
|-------------------------------------|------------------------------|-------------|------------------|---------------------------|
| Nema 1, 3R, 12 | | | | |
| Indication OHB and OHY: I-O, ON-OFF | | | | |
| Black, double-grip | 2x200 - 2x7.9 | OHB200J12P | 1SCA022865R9510 | 0.40 - 0.88 |
| Red-yellow, double-grip | 2x200 - 2x7.9 | OHY200J12P | 1SCA101587R1001 | 0.40 - 0.88 |
| Indication: Test-OFF-ON/ Test-O-I | | | | |
| Black, double-grip | 2x200 - 2x7.9 | OHB200J12PT | 1SCA1116510R1001 | 0.40 - 0.88 |
| Red-yellow, double-grip | 2x200 - 2x7.9 | OHY200J12PT | 1SCA111512R1001 | 0.40 - 0.88 |
| Nema 4X | | | | |
| Indication OHB and OHY: I-O, ON-OFF | | | | |
| Black, double-grip | 2x200 - 2x7.9 | OHB200L12P | 1SCA111564R1001 | 0.40 - 0.88 |
| Red-yellow, double-grip | 2x200 - 2x7.9 | OHY200L12P | 1SCA111569R1001 | 0.40 - 0.88 |
| IP65, NEMA 1, 3R, 12 | | | | |
| Indication OHB and OHY: I-O, ON-OFF | | | | |
| Black | 274 - 10.8 | OHB274J12 | 1SCA115920R1001 | 0.54 - 1.19 |
| Red-yellow | 274 - 10.8 | OHY274J12 | 1SCA115919R1001 | 0.54 - 1.19 |
| Black | 330 - 13 | OHB330J12 | 1SCA115922R1001 | 0.58 - 1.28 |
| Red-yellow | 330 - 13 | OHY330J12 | 1SCA115921R1001 | 0.58 - 1.28 |
| IP65, NEMA 1, 3R, 12 | | | | |
| Indication: Test-OFF-ON/ Test-O-I | | | | |
| Black | 274 - 10.8 | OHB274J12T | 1SCA120250R1001 | 0.54 - 1.19 |
| Black | 330 - 13 | OHB330J12T | 1SCA120252R1001 | 0.58 - 1.28 |

Handles padlockable in ON and OFF positions are available on request.

Shafts

Shaft diameter 12 mm.



OXP12X

| Shaft lenght [mm] | Mounting depth [mm - inch] | Type | Order number | Weight/unit [kg - lb] |
|-------------------|----------------------------|-----------|-----------------|--------------------------|
| 280 | 453...539 - 17.8...21.2 | OXP12X280 | 1SCA022137R5140 | 0.3 - 0.66 |
| 325 | 498...584 - 19.6...23 | OXP12X325 | 1SCA022042R5810 | 0.36 - 0.79 |
| 395 | 568...654 - 22.4...25.8 | OXP12X395 | 1SCA022042R5990 | 0.43 - 0.95 |
| 465 | 633...724 - 24.9...28.5 | OXP12X465 | 1SCA022042R6020 | 0.51 - 1.12 |
| 535 | 708...794 - 27.9...31.3 | OXP12X535 | 1SCA022042R6110 | 0.59 - 1.3 |

Direct mount handles

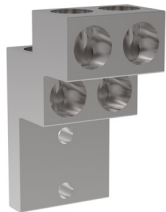
Includes a shaft and a mechanism cover. Indication Test-OFF-ON/ Test-O-I. Padlockable with three padlocks in OFF-position. UL requirements for spacings through air and protection of live parts must be taken into account in the installations.



OTV1000

| Colour | Handle lenght [mm - inch] | Type | Order number | Weight/ unit [kg - lb] |
|--------------------|---------------------------|------------|-----------------|---------------------------|
| Black | 274 - 10.8 | OTV1000EK | 1SCA106608R1001 | 0.75 - 1.65 |
| Black, double-grip | 2x200 - 2x7.9 | OTV1000EPK | 1SCA121085R1001 | 0.90 - 1.98 |

Ordering information



OZXA-1200

Lug terminal

| Decription | Type | Order number | Weight/ unit [kg - lb] |
|------------------------------------|-----------|------------------|------------------------|
| Lug terminal kit (includes 6 lugs) | OZXA-1200 | UPC: 80432533797 | 0.451 - 0.978 |

Technical data for lug terminal OZXA-1200

| | |
|---|--|
| UL approval file | E6207 |
| Qty of conductors, Lug wire Range, AWG/kcmil | (4) #2 - 600 |
| Temperature Rating, °C | 75 |
| Cu-wire tightening torque, Nm - lb.in | 56.5 - 500 |
| Al-wire tightening torque, Nm - lb.in | 56.5 - 500 |
| Wire tightening Type of tool | Allen (Hex) wrench |
| Wire tightening Tool size | 1/2 in |
| Lug mounting torque, Nm - lb.in | 50 - 443 |
| Lug mounting | Bolt & nut mounting, Bolt kit M12x60 included in switch delivery |
| AWG (American Wire Gauge) wire class | B,C |
| Quantity of lug terminals required for OT1600...2000U 2-pole/ 3-pole/ 4-pole: | 8/12/16 |



OA1G_

Auxiliary contacts

IP20

Contact numbering according to EN 50013.

| Function | Type | Order number | Weight/ unit [kg - lb] |
|----------|------------------------|-----------------|------------------------|
| 1N0 | OA1G10 | 1SCA022353R4970 | 0.03 - 0.07 |
| 1N0 | OA1G10AU ¹⁾ | 1SCA022436R7910 | 0.03 - 0.07 |
| 1NC | OA3G01 | 1SCA022456R7410 | 0.03 - 0.07 |
| 1NC | OA3G01AU ¹⁾ | 1SCA022819R5260 | 0.03 - 0.07 |

Mounting under the mechanism cover

The "test" contacts operate in ON- and OFF-positions as well as when the handle is turned to TEST-position = 45 degrees over the OFF-position. The "test indication" contacts operate only when the handle is turned to TEST-position. See the function table below. The OA1G10 (N.O.) or OA3G01 (N.C.) auxiliary contact blocks can be used as standard auxiliary contacts, "test" or "test indication" contacts. The desired functions are achieved when an auxiliary contact block is installed in a specific place shown in the mounting instruction. In order to activate the "test" and "test indication" features a handle with test function is required.

Max 4 test indication contacts + 6 test contacts + 2 early operation test contacts

The test contacts can be used as standard auxiliary contacts as well.

1) Types_AU are gold plated for extremely difficult circumstances and low control voltages.

| Handle position | Main contacts | Aux./Test contacts N.O. | Test indication contact N.O. |
|---|---------------|-------------------------|------------------------------|
| Function table of auxiliary contacts | | | |
| Test | open | closed | closed |
| 0 | open | open | open |
| I | closed | closed | open |

Dimension drawings [mm/inch]

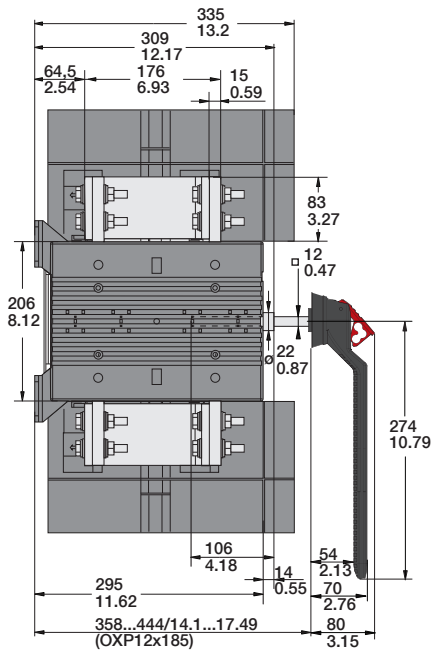
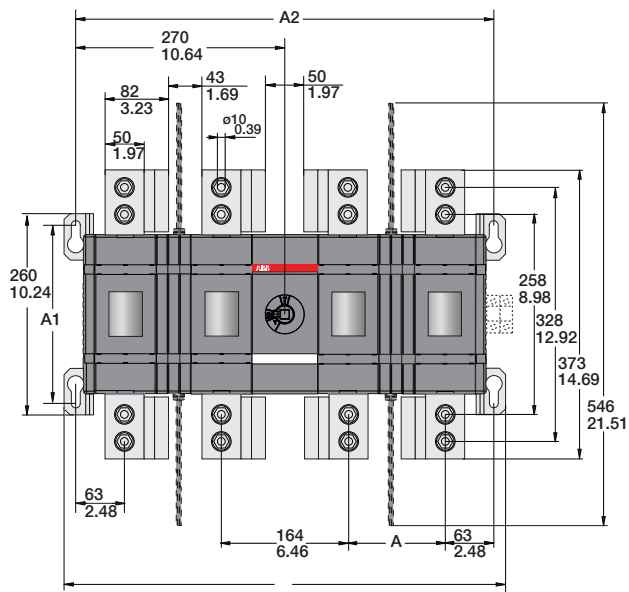
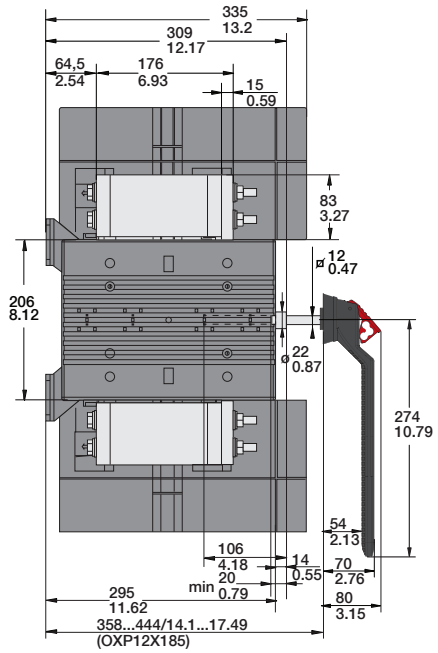
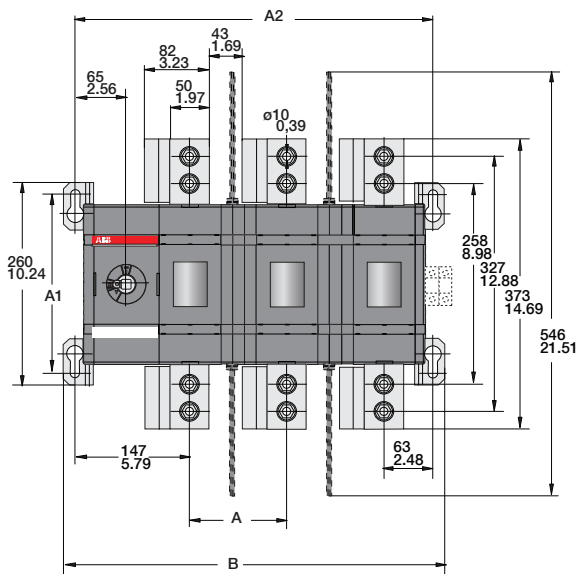


ABB Oy
Protection and Connection
P.O. Box 622
FI-65101 Vaasa, Finland
www.abb.com

Find the address of your local sales organization
on the ABB homepage:

www.abb.com/contacts
> Low Voltage Products and Systems