

## Course description

# F338

## Design of electrical installations by using DOC & CAT

### Course Duration

The duration is 2 days.

### Course Type

This is a classroom course with activities led by an instructor.

### Course Goal

After this course, you will know the main functions and commands of DOC software, in order to be able to easily design both low voltage and medium voltage networks in conformity to IEC Standards. You will learn how to prepare commercial offers using CAT software and how to configure electrical devices avoiding mistakes.

### Student Profile

The course is intended for ABB sales engineers and new hired product managers, and for consultants, electrical designers and specialists.

### Prerequisites and Recommendations

The student must have knowledge of electrical design.

It's recommended the installation of DOC & CAT software before the course.

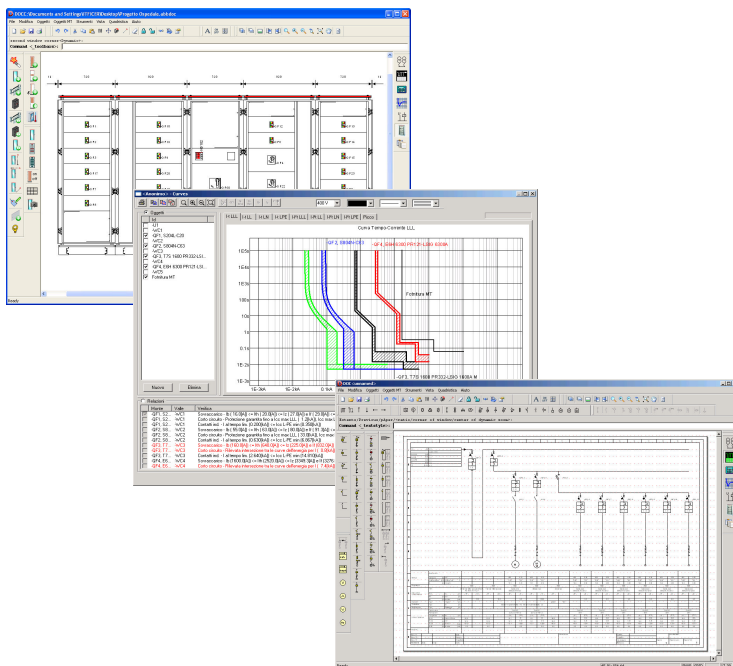
### Main Topics

#### Day 1

- Introduction to ABB Technical Collection Tools DOC & CAT
- ABB Software desktop, registration and software upgrade
- Main characteristics of DOC & CAT
- Electrical design of a network with DOC: practical section using software
- Creation of technical documentation

#### Day 2

- Low voltage switchboard configurator using DOC
- Overtemperature calculation of an enclosure
- Creation of quotation using CAT
- Main features of CAT software
- Product configuration with CAT



# DOC CAT

