



GEMINI UL the versatile switchboard
that challenges the elements

Gemini

Solid foundations to be unique

Suitable both for indoor and outdoor installations, the new GEMINI UL switchboards by ABB are easy to install using its wide range of snap-on tool-free accessories.

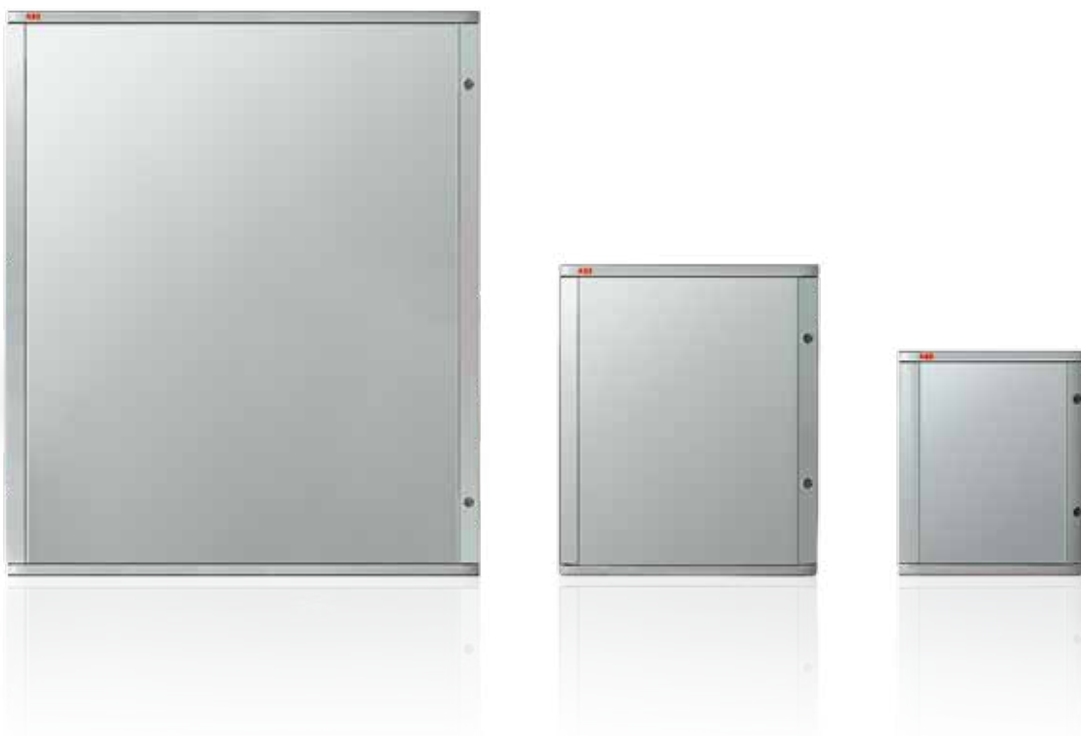
Flexibility and ease of use make the GEMINI UL switchboard highly versatile, with its wide range of accessories that give the user different configuration options for installing electrical components and mounting the enclosure. The GEMINI UL switchboard can be easily used for automation and secondary power distribution with its optional variable-depth DIN Rail, internal mounting plates, inner door and other accessories, as standalone switchboard or on-board machine.

Available in 6 different sizes, from the smallest GEMINI Size 1 which is 15.75"x 13.19"x8.27" (HxWxD) up to the largest Gemini Size 6, 39.57"x33.07"x14.17" (HxWxD), it's able to accommodate up to 216 DIN Rail modules.

The GEMINI UL is strong and sturdy thanks to an innovative co-injection molding technology, reaching highly significant values of resistance within the range of thermoplastic enclosures available in the market.

GEMINI UL is UL listed (UL508A, UL50, and UL50E) and CSA Certified (C22.2 Nr14) NEMA Type 4X. Excellent UV protection and chemical resistance make GEMINI UL the perfect enclosure for harsh industrial environments and in solar farm applications. Unlike enclosures containing polyester, GEMINI UL is made of a thermoplastic material that is environmentally friendly (100% recyclable and RoHS compliant).

All GEMINI UL enclosures have a door that opens over 180° for convenient access into the switchboard. The door hinges can be easily reversed from left to right and vice versa for a left opening or right opening door, whichever you prefer.



The perfect combination between robustness and reliability

| | Internal - external dimensions (inches) | | | | | |
|-------------|---|---------------|---------------|---------------|---------------|---------------|
| Height | 11.81 - 15.75 | 17.72 - 21.65 | 23.62 - 27.56 | 23.62 - 27.56 | 29.53 - 33.66 | 35.43 - 39.57 |
| Width | 9.84 - 13.19 | 14.76 - 18.11 | 14.76 - 18.11 | 19.69 - 23.23 | 19.69 - 23.23 | 29.53 - 33.07 |
| Depth | 7.09 - 8.27 | 9.06 - 10.24 | 9.06 - 10.24 | 9.06 - 10.24 | 12.99 - 14.17 | 12.99 - 14.17 |
| DIN Modules | 24 (12x2) | 54 (18x3) | 72 (18x4) | 96 (24x4) | 120 (24x5) | 216 (36x6) |
| Size | 1 | 2 | 3 | 4 | 5 | 6 |

Healthy materials and innovative processes

GEMINI UL is made with a thermoplastic material with high self-extinguishing properties and is obtained by using the co-injection molding technique: an innovative process developed by ABB which results in a finished product that keeps its excellent mechanical characteristics and high performance over time.

Since GEMINI UL is made of a thermoplastic material, it has no health issues like the ones you could have with fiberglass reinforced polyester enclosures, e.g. fiberglass dust entering your eyes and lungs when drilling or cutting the enclosure, or fiberglass fibers emerging on the surface after few years in the field, especially if exposed to harsh weather.

Practical, easy and fast

In applications using DIN rails, the patented uprights integrate perfectly with all the accessories that can be mounted without using any tool (snap-on technology).

The innovative GEMINI uprights come with the following important characteristics and strengths:

- An ergonomic structure that makes work easier
- The ability to adjust the inter-axis and the depth of the DIN Rails (tool-free operations)
- A dual functionality: support the DIN rail and cable holders (integrated wiring duct)
- Various kinds of front panels, blank or pre-cut for modular devices and molded case circuit breakers (MCCBs), are hinged on both sides for fast access and inspection inside of the switchboard

For typical automation applications, the mounting plate can be installed inside the GEMINI UL and adjusted to various depths without using any tool. Dedicated kits are available for the installation of Tmax and Tmax XT MCCBs.

Aesthetics

GEMINI UL comes in grey color RAL 7035 and it integrates perfectly with the coordinate design of ABB products.

Versatility

GEMINI UL can be used in almost any kind of environment, even with extreme weather conditions.

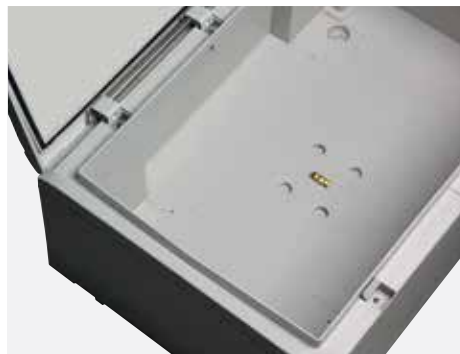
The NEMA Type 4X rating along with its sturdy construction and resistance to adverse weather conditions and aggressive chemical agents, allows GEMINI UL to be installed in particularly harsh conditions.

The quality is felt in the details

A wide range of electrical and mechanical elements designed to streamline the process of installation, configuration and commissioning of the GEMINI UL switchboards. The quality is apparent particularly in the details.



Gemini doors open at an angle of more than 180° giving easy access to the devices installed inside the switchboard.



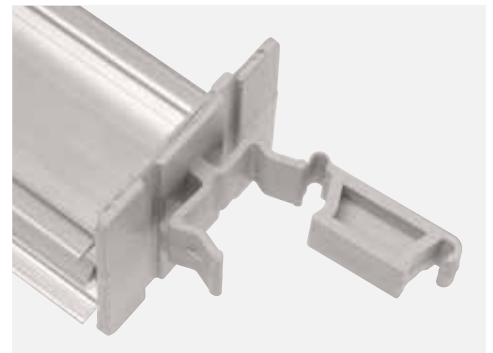
The special structure of the inner perimeter of the box ensures further protection against the penetration of water. The box is supplied with a spirit level.



Application of the inner door guarantees IP30 degree of protection when the switchboard door is open.



Example of the configuration of a switchboard for an automation application: some ABB control and protection devices are installed on the plate. The inner door is fitted with emergency push-button and rotary handle.



The DIN rail is supplied with special hooks already in position for attaching to the uprights.



The uprights can be extracted to make wiring operations easier at the workbench.



The blank and drilled panels are hinged onto both sides; the description of the installed components can be kept in the special compartment protected by a transparent, hinged flange.



The upright with the incorporated wiring duct is an exclusive ABB patent that rationalizes the path of cables inside the switchboard.



The fixing hooks and feet supplied in the standard versions are applied without having to use tools, making it possible to install the base plate at seven different depths inside the switchboard. They can also be adjusted at three further positions.



Fixing hooks and feet allow the uprights to be snap-mounted inside the box.



The depth at which the DIN rail, the modular plates, the kit for fixing the Tmax circuit breakers and the wiring duct are positioned can be adjusted with a simple sliding movement.

Contact us

ABB SACE

A division of ABB S.p.A.

Enclosures and Cable Systems

Viale Vicenza, 61

36063 Marostica (VI) - Italy

Phone: (+39) 0424 478200

Fax: (+39) 0424 478305

www.abb.it/lowvoltage

www.abb.com

ABB

Low Voltage Products

8155 T&B Boulevard

Memphis, TN 38125 - USA

www.abb.us/lowvoltage

USA Technical Support: 888-385-1221

Customer Service: 888-862-3290

7:00 a.m. - 5:30 p.m., CST, Monday - Friday

lvps.support@us.abb.com

The data and illustrations are not binding. We reserve the right to modify the contents of this document on the basis of technical development of the products, without prior notice.

Copyright 2015 ABB. All rights reserved.

1SLC805010L0201 - 05/2015 - 1.000 Pcs. - CAL