



ATEX technical instructions sheet for safe mounting



Terminal blocks **entrelec®**

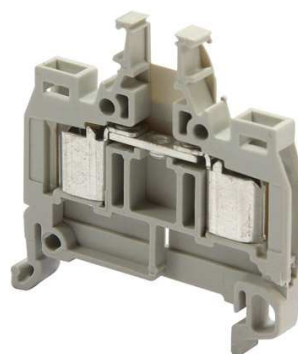
Compression clamp terminal blocks

Feed through & Ground

D1.5/6.ADO.Ex range

Ordering part numbers

| | | |
|--------------|-------------------------------------|--------------------|
| Feed through | Grey | 1SNA 146 036 R1100 |
| | Blue | 1SNA 146 037 R1200 |
| | Yellow | 1SNA146 287 R2200 |
| Ground | Green/yellow (With rail contact) | 1SNA 146 040 R0100 |





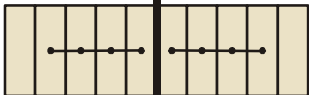
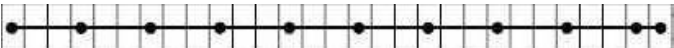
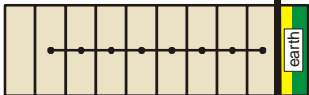
Connecting capacity

| | |
|---------------------|----------------------|
| Rated cross-section | 1.5 mm ² |
| Min solid wire | 0.34 mm ² |
| Max solid wire | 1.5 mm ² |
| Min flexible wire | 0.34 mm ² |
| Max flexible wire | 1.5 mm ² |

| EC Type examination certificate | LCIE 02 ATEX 0021U | Group category | I M2 II 2GD* | Protection method | } Ex e: increased security |
|---|-----------------------|----------------|-----------------|-------------------|----------------------------|
| Supplementary EC type examination certificate | LCIE 02 ATEX 0021U/01 | | I M1 II 1G | | } Ex i: intrinsic security |

*: in the presence of explosive dust atmospheres, terminal blocks are to be installed in certified enclosure II2D

| | |
|------------------------------------|--------------|
| Temperature of service | -55°C + 85°C |
| Temperature increase (IEC 947-7-1) | Maximum 45k |
| Insulating material | PA 6.6 |
| IRC | 600 |
| Flammability (UL94) | V0 |
| Rated current (IEC 947-7-1) | 17.5 A |
| Maximum dissipated power | 0.6 W |

| Maximum voltage | Increased security (EN 60079-7) | Intrinsic security (EN 60079-11) |
|--|------------------------------------|-------------------------------------|
| Blocks in rows  | 550V | 90V |
| Blocks feed through & ground in rows  | 550V | 90V |
| Blocks feed through in rows with jumper bar BJM (Frontal, without screw) separated with end section FEMAD3  | 60V | 90V |
| Blocks feed through in rows with jumper bar BJS6... with alternate jumpering  | 400V | / |
| Blocks feed through & ground in rows, with jumper bar BJM separated with end section FEMAD3  | 60V | 90V |
| Blocks feed through with test plug FC2 and test AL2, with end section FEMAD3 | 500V | 90V |