

CM-PFE.2

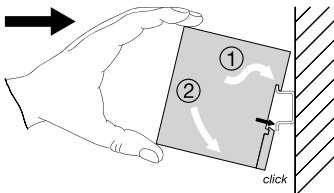
Operating and installation instructions

Three-phase sequence monitoring relay, CM range

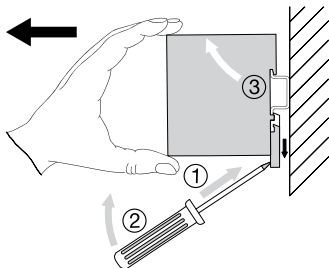
Note: These operating and installation instructions cannot claim to contain all detailed information of all types of this product range and can even not consider every possible application of the products. All statements serve exclusively to describe the product and have not to be understood as assured characteristics with legal force. Further information and data is obtainable from the catalogues and data sheets of this product, from the local ABB sales organisations as well as on the ABB homepage www.abb.com. Subject to change without prior notice.




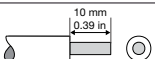
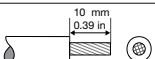
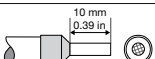
Attention! Hazardous voltage! Installation by person with electrotechnical expertise only. Before installing this unit, read these operating and installation instructions carefully and completely.



2CDC 253 004 F0015

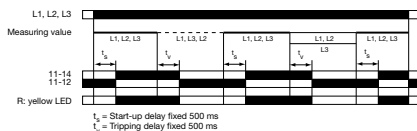


2CDC 253 005 F0015

 \varnothing 4.5 mm / 0.177 in / PZ 1	0.6...0.8 Nm 5.31...7.08 lb.in
	2 x 0.75...1.5 mm ² 2 x 18...16 AWG
	2 x 1.0...1.5 mm ² 2 x 18...16 AWG
	2 x 0.75...1.5 mm ² 2 x 18...16 AWG

2CDC 252 048 F0009

T_a: -20 ... +60 °C (-4 ... +140 °F)
IP 20



2CDC 252 061 F0208

If both, ambient temperature > 50 °C and rated operational currents > 2 A,
lateral spacing to other units has to be min. 10 mm (0.394 in).