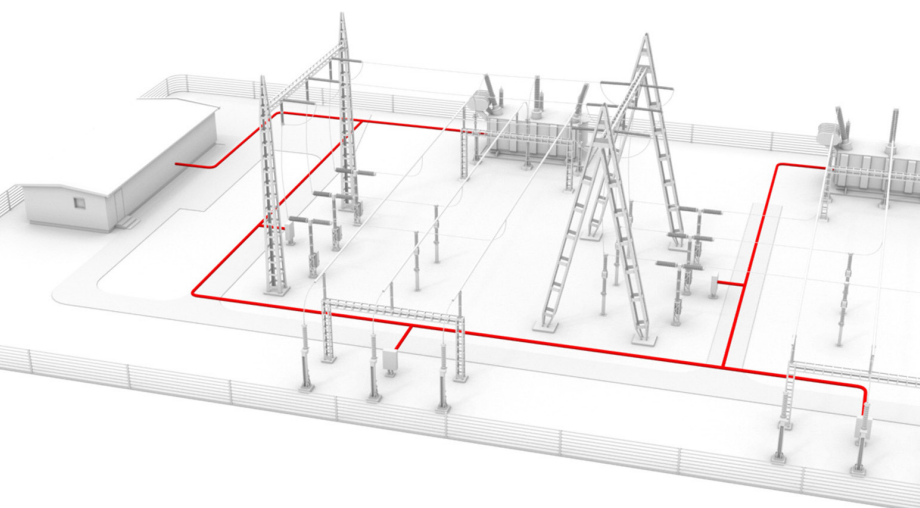


# Digital Substation Products

## Relion® relays warranty policy for North America



The Relion® product family offers the widest range of products for the protection, control, measurement and supervision of power system applications.

### Relion protection and control

To help ensure interoperable and future-proof solutions, Relion products are designed to implement the core values of the IEC 61850 standard, including station and process bus. Customers can benefit from ABB's leading-edge technology, global application knowledge, and experienced support network.

The IEC 61850-compliant protection and control IED Manager PCM600 tool provides versatile functionalities for the entire life cycle of all Relion protection and control IED applications.

### Our commitment

ABB is reinforcing its commitment to the industry by providing unparalleled quality of products and services. With a worldwide installed base of over 1.2 million Relion relays, ABB has developed unprecedented trust in dependable performance. That's why ABB's Relion ANSI and global versions of products, sold and installed in North America, is backed by a 10-year warranty. This policy reflects ABB's commitment to customer service and support, and also demonstrates our confidence in the quality and reliability of our products.

### ABB warranty policy for ANSI and global versions of Relion relays sold and installed in North America

- Hassle-free emergency product replacement process
- Technical support (1-800-929-7947, ext 1)
  - Factory technical support and local field support
  - Free application support
  - Free engineering support
- 10-year warranty from date of shipment
  - Warrants against any defects in material and workmanship during the warranty period

### Product training

ABB offers factory and on-site training for Relion products and applications, to help customers achieve long product life, improve safety, and reduce downtime. ABB partners with the customer to address specific needs and help make jobs easier for personnel, thanks to deeper knowledge of equipment and service procedures.

Disclaimer: Excludes Relion IEC family relays

- 01 REX610
- 02 REF615, RET615, REM615, REG615, RED615 (ANSI)
- 03 REF615R (ANSI)
- 04 REF620, RET620, REM620, RER620 (ANSI)
- 05 REX640
- 06 Substation Merging Unit SMU615



01



02



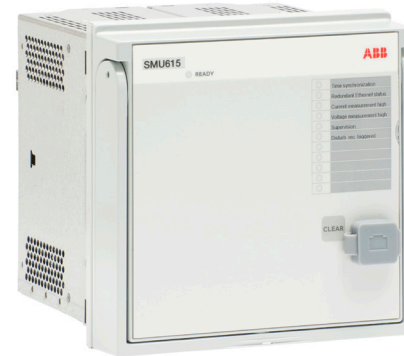
03



04



05



06

ABB Inc.  
Digital Substation Products  
680 Century Point  
Lake Mary, FL 32746  
Technical support: 1-800-929-7947, ext 1  
<https://new.abb.com/medium-voltage/distribution-automation/relion>

We reserve the right to make technical changes or modify the contents of this document without prior notice. With regard to purchase orders, the agreed particulars shall prevail. ABB Inc. does not accept any responsibility whatsoever for potential errors or possible lack of information in this document.

We reserve all rights in this document and in the subject matter and illustrations contained therein. Any reproduction, disclosure to third parties or utilization of its contents – in whole or in parts – is forbidden without prior written consent of ABB Inc. Copyright© 2022 ABB  
All rights reserved