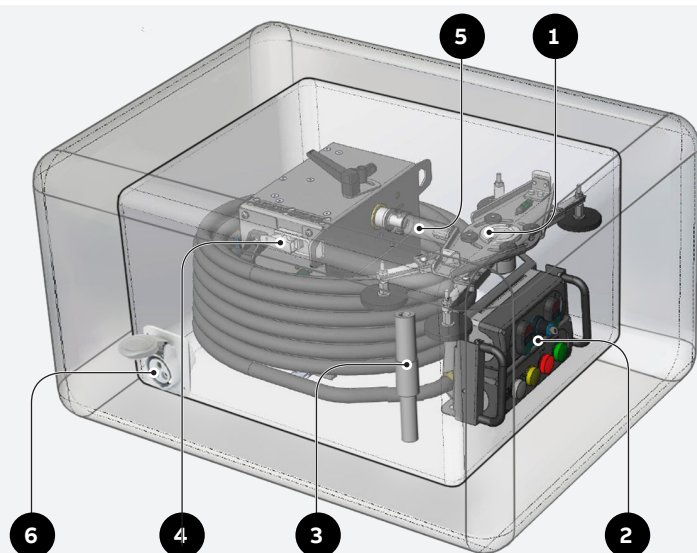


TruckMaster CS

Ordering instructions



Trolley content

1. Driver docking
2. Remote console with umbilical cord
3. Centering pin
4. Portable driver
5. Adapter
6. Socket

TruckMaster CS trolley configurable codes instruction guide

TruckMaster CS trolley content must be configured. The driver docking (1) is standard and it is already included in the trolley.

Remote console (3), portable driver (4), centering pin (3) and adapter (5) must be selected in accordance to power supply voltage and switchgear type. The trolley includes also the mechanical interlock device actuator and adjustment tools for the driver docking.

TruckMaster CS is available in different variants in relation to switchgear rack in-out positions:

- TruckMaster CS two positions for switchgear with circuit breaker connected and disconnected positions (see Table A and B)
- TruckMaster CS three positions for switchgear with circuit breaker connected, test and disconnected positions (see Table C).

TruckMaster CS can be purchased via Business On Line (BOL at the following **link**) or manually.

If you run the manual path, ensure to specify all the necessary codes and quantities.

This guide can be of help for both methods.

Please pay attention, it is necessary always to select two codes in BOL in order to properly configure TruckMaster CS trolley.

Follow the instructions in the next pages in order to define the proper ordering codes.

1st code to be composed:

Digit	1	2	3	4	5	6	7	8	9	10	11	12	13	14	15	16	17	18
Code	1	V	C	F	T	M	C	S	X	X	X	N	Y	Y	O	J	Z	Z

Auxiliary voltage:

a.110V dc
b.220V dc

Total racking turns:

a.14 f.30
b.15 g.37
c.16 h.42
d.20 i. 45
e.25 j. 48

Please refer to the Tables A, B or C in order to define the value, selecting the row relevant to the switchgear type at the rating of interest.

TruckMaster CS variant:

a. 0 (TruckMaster CS two positions)
b. 1 (TruckMaster CS three positions)

Turns from disconnected to test position:

a. 00 (TruckMaster CS two positions)
b. 04 (TruckMaster CS three positions)
c. 16 (TruckMaster CS three positions)

Please refer to the Table C in order to select the right turns to test position value, selecting the row relevant to the switchgear type at the rating of interest for TruckMaster CS three positions version.

2nd code to be selected:

The adapter ordering code, including also the relevant centering pin where needed, dedicated to installed switchgear must be ordered separately. Please refer to the Tables A, B or C in order to select the right code: find the row relevant to the switchgear type of interest and take the code in the column named “2nd code to be selected”.



“Pay attention: the distance between the rack in-out apparatus operation hole axis and switchroom floor (H) must be minimum 240mm in order to properly mount TruckMaster CS” (see Fig. 01)

Table A: guideline for TruckMaster CS two positions (JZZ=000) ordering codes selection for IEC switchgear:

Switchgear/Cassette type	Total racking turns (YY value to be assigned to 1 st code 1VCFTMCSXXXNY0000)				2 nd code to be selected
Nominal voltage	12 kV	17.5 kV	24 kV	36-40 kV	
CBE-CBF	20	20	-	-	1VCFTMCSB64D30L915
CBE-CBF	-	-	30	-	1VCFTMCSB61D30L775
LeanGear ZN1	20	-	-	-	1VCFTMCSB61D30L775
LeanGear ZS9	20	-	-	-	1VCFTMCSB61D30L775
OneFit	20	20	30	-	1VCFTMCSB63D30L475
PowerCube type PB	20	20	30	30	1VCFTMCSB62D25L945
PowerCube type PB2 and PB3 for VD4 Digitup >1250A	15	15	-	-	1VCFTMCSB62D25L945
Powerbloc	20	20	30	-	1VCFTMCSB62D25L945
UniGear 550	20	20	-	-	1VCFTMCSB61D30L775
UniGear ZS1	20	20	30	-	1VCFTMCSB61UGL775
UniGear ZS1 with VD4 Digitup >1250A	15	15	-	-	1VCFTMCSB61UGL775
UniGear ZS2	-	-	-	30	1VCFTMCSB62D25L945
UniGear ZS3.2 with HD4Z 40.5kV <=1600A	-	-	-	45	1VCFTMCSB63D30L475
UniMix P1/E	20	20	-	-	1VCFTMCSB62D25L945
UniSafe	20	20	30	30	1VCFTMCSB62D25L945
UniSec (only WBC, WBS)	20	20	20	-	1VCFTMCSB61D30L775
UniSwitch (only CBW and CBS)	20	20	20	-	1VCFTMCSB63D30L475
UniVer C	20	20	30	-	1VCFTMCSB62D25L945
ZS1	20	20	30	-	1VCFTMCSB63D30L475
ZS1 with HA3/Z 24kV <=1250A P275	-	-	25	-	1VCFTMCSB63D30L475
ZS8.4 with VD4-HD4/Z8	20	20	25	-	1VCFTMCSB63D30L475
ZS8.4 with VD4-HD4/ZT8-ZS8	25	25	25	-	1VCFTMCSB63D30L475

Table B: guideline for TruckMaster CS two positions (JZZ=000) ordering codes selection for ANSI switchgear:

Switchgear/Cassette type	Total racking turns (YY value to be assigned to 1 st code 1VCFTMCSXXXNYY0000)				2 nd code to be selected
Nominal voltage	5 kV	15 kV	27 kV	38 kV	
Westinghouse 50DH	14				1VCFTMCSB613JL478
Westinghouse 150DH		16			1VCFTMCSB612JL6088
Westinghouse DHP standard depth	48				1VCFTMCSB68JL5181
Westinghouse DHP with 8" depth	48				1VCFTMCSB69JL3068
McGraw Edison WSA		42			1VCFTMCSB610JL7357
McGraw Edison PSD		42			1VCFTMCSB610JL7357

Table C: guideline for TruckMaster CS three positions (J=1) ordering codes selection:

Switchgear/Cassette type	Total racking turns (YY)/Racking turns from disconnected to test (ZZ) position (YY and ZZ value to be assigned to 1 st code 1VCFTMCSXXXNY01ZZ)				2 nd code to be selected
Nominal voltage	5 kV	15 kV	27 kV	38 kV	
SafeGear	25/04	25/04			1VCFTMCSB65D31L625
SafeGearHD	37/16	37/16			1VCFTMCSB66D30L900

Examples of TruckMaster ordering codes selection

1st example: TruckMaster CS two positions for UniGear type ZS1 12kV switchgear with 110 V DC supply voltage

The ordering codes to be selected are the following seeing table A:

• 1st code, 1VCFTMCSXXXNYY0JZZ configuration:

Ordering Code	Description
1VCFTMCS110N200000	TruckMaster CS (cassette) two positions (J=0), aux. voltage 110Vdc (XXX=110) with mechanical interlock device actuator, remote console with umbilical cord length 15mt and driver docking with its adjustment tools, without switchgear signal port, stroke 20 turns (YY=20), no turns for test position (ZZ=00) for switchgear with rotative racking mechanisms.

• 2nd code:

Ordering Code	Description
1VCFTMCSB61UGL775	Adapter for UniGear ZS1 (all version)

2nd example: TruckMaster CS three positions for SafeGearHD 15kV switchgear with 220 V DC supply voltage

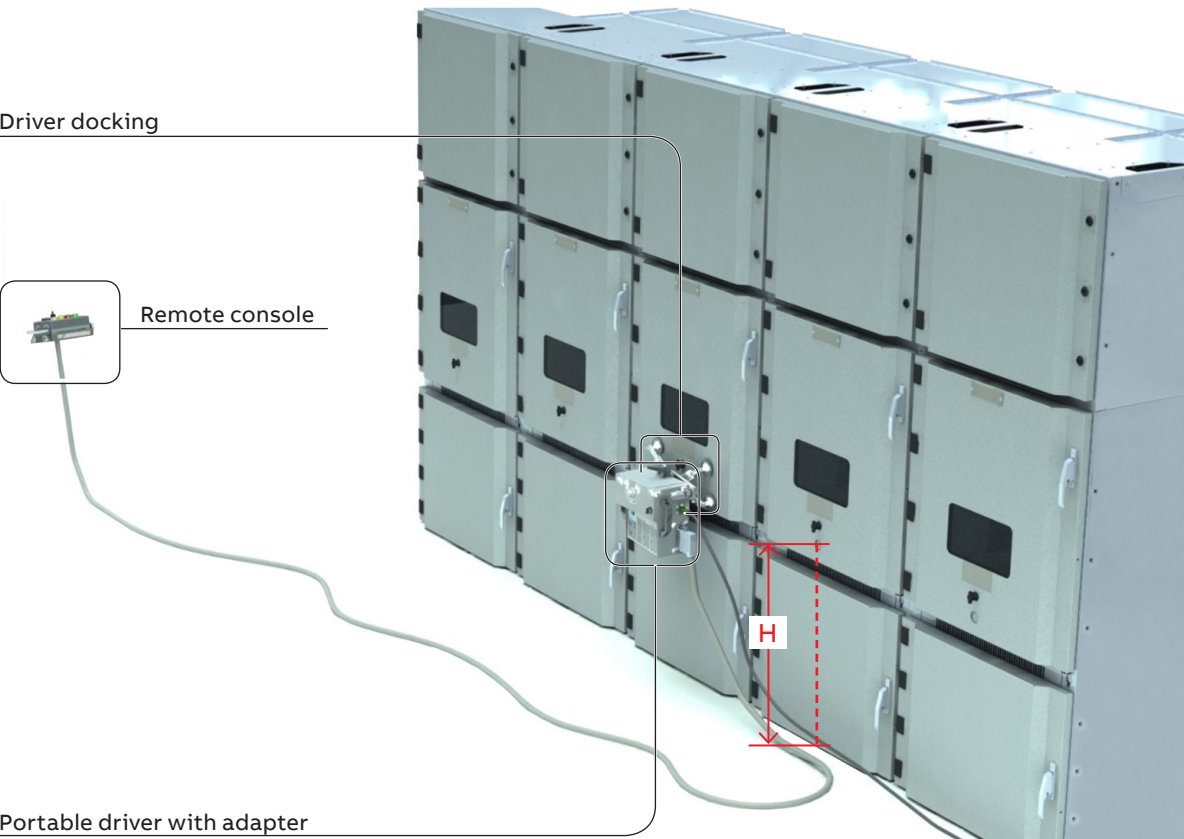
The ordering codes to be selected are the following seeing table C:

• 1st code, 1VCFTMCSXXXNYY0JZZ configuration:

Ordering Code	Description
1VCFTMCS220N370116	TruckMaster CS (cassette) three positions (J=1), aux. voltage 220Vdc (XXX=220) with mechanical interlock device actuator, remote console with umbilical cord length 15mt and driver docking with its adjustment tools, without switchgear signal port, stroke 37 turns (YY=37), and 16 turns for test position (ZZ=16) for switchgear with rotative racking mechanisms.

• 2nd code:

Ordering Code	Description
1VCFTMCSB66D30L900	Adapter for SafeGear HD (3 Pos.)



“Pay attention: the distance between the rack in-out apparatus operation hole axis and switchroom floor (H) must be minimum 240mm in order to properly mount TruckMaster CS” (see Fig. 01)

Spare parts list

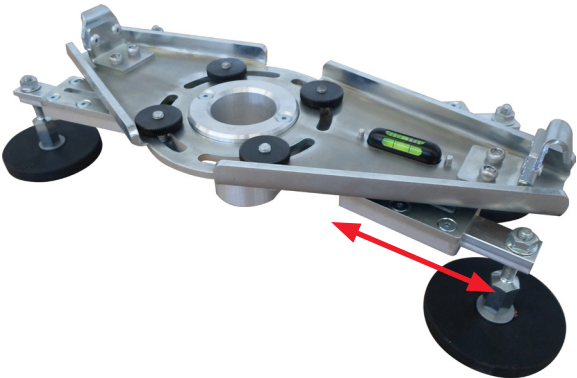
Please consider the following ordering codes to order additional components or spare parts.

1-Driver docking ordering code

The driver docking is applied to the circuit breaker compartment door to accept the link with the portable driver.
A single portable driver and the relevant remote console are needed in the switch-room to implement the remote racking operations.

The ordering code is always the same:

Code	Description
1VCFTMCSDRIVERDOCK	Driver docking support for TruckMaster CS

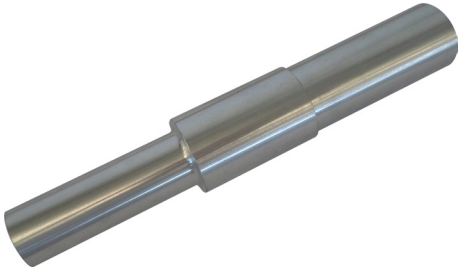


—
02

2-Centering pin ordering code

The code depends to the switchgear/cassette type:

Code	Description
1VCFTMCSCENTPIN001	Centering pin for TruckMaster CS two positions for switchgear Table A (UniGear type ZS1 excluded)
1VCFTMCSCENTPIN002	Centering pin for TruckMaster CS two positions for UniGear type ZS1
1VCFTMCSCENTPIN003	Centering pin for TruckMaster CS three positions for switchgear Table C



—
03

3-Remote console with umbilical cord

The code is always the same:

Code	Description
1VCFTMCSCONSOLE110	Remote console with umbilical cord length 15mt for TruckMaster CS aux. voltage 110V dc
1VCFTMCSCONSOLE220	Remote console with umbilical cord length 15mt for TruckMaster CS aux. voltage 220V dc



—
04

4-Adapter ordering code

Please select the ordering code following the indication in the second page table:

Code	Description
1VCFTMCSB64D30L915	Adapter for CBE (12-17 kV) ⁽¹⁾
1VCFTMCSB61D30L775	Adapter for CBE-CBF (24 kV), LeanGear ZN1, LeanGear ZS9 and Unisec, UniGear 550 ⁽¹⁾
1VCFTMCSB62D25L945	Adapter for PowerCube all PB type, Powerbloc, UniGear ZS2, UniSafe ⁽¹⁾
1VCFTMCSB63D30L475	Adapter for OneFit, UniGear ZS3.2, UniSwitch, ZS1, ZS8.4, Z8, ZT8 ⁽¹⁾
1VCFTMCSB61UGL775	Adapter for UniGear ZS1 (all version) ⁽¹⁾
1VCFTMCSB65D31L625	Adapter for SafeGear (3 Pos.) ⁽¹⁾
1VCFTMCSB66D30L900	Adapter for SafeGear HD (3 Pos.) ⁽¹⁾
1VCFTMCSB68JL5181	Adapter for Westinghouse 50DHP (long)
1VCFTMCSB69JL3068	Adapter for Westinghouse 50DHP (short)
1VCFTMCSB610JL7357	Adapter for MacGraw-Edison WSA-PSD
1VCFTMCSB612JL6088	Adapter for Westinghouse 150DH
1VCFTMCSB613JL478	Adapter for Westinghouse 50DH

⁽¹⁾ The code includes the relevant centering pin



05

5-Power cable socket

Please select the ordering code socket if needed. One socket is always included in the trolley. Please evaluate to order additional quantity considering that it is possible to supply TruckMaster CS with a supply single point for a line-up up to 4-5 panels:

Code	Description
1VCFTMCSSOCKETSWGR	Socket 10° angled flush mounting, IP44/IP54 2P+E, 50-250V/dc 16A grey, for switchgear installation for supply the TruckMaster CS



06

6-Power cable connector

Please select the following ordering code socket for power cable connector:

Code	Description
1VCFTMCSPowerCABLE	Power cable connector assembly length 5mt for TruckMaster CS

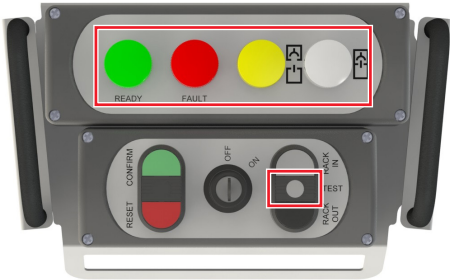


07

7-Remote console led kit

Please select the following ordering code for remote console led kits:

Code	Description
1VCFTMCSLED110CONS	Led, set of 5 pieces and 4 pilot light heads for remote console TruckMmatser CS, auxiliary voltage 110Vdc
1VCFTMCSLED220CONS	Led, set of 5 pieces and 4 pilot light heads for remote console TruckMmatser CS, auxiliary voltage 220Vdc

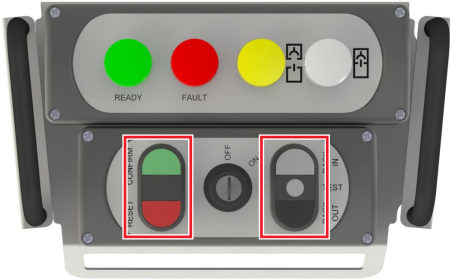


—
08

8-Remote console push button kit

Please select the following ordering code for remote console push button kit:

Code	Description
1VCFTMCSPUSHBTCONS	Push button, set of 2pieces, complete of position switch for remote console TruckMaster CS

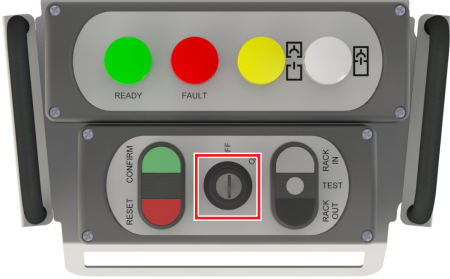


—
09

9-Remote console key lock

Please select the following ordering code for remote console key lock:

Code	Description
1VCFTMCSKEYSELCONS	Key lock two position with position switch for remote console TruckMaster CS



—
10

More product information:
www.abb.com/mediumvoltage
Your contact center:
www.abb.com/contactcenters
More service information:
www.abb.com/service

TruckMaster webpage:



BOL webpage:



Data and illustration are not binding. We reserve the right to make changes in the course of technical development.

© Copyright 2021 ABB. All rights reserved.