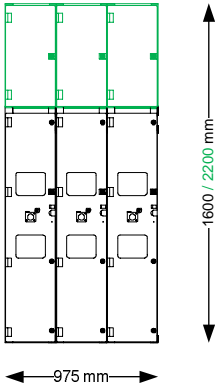
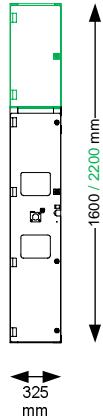
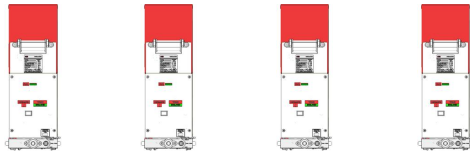


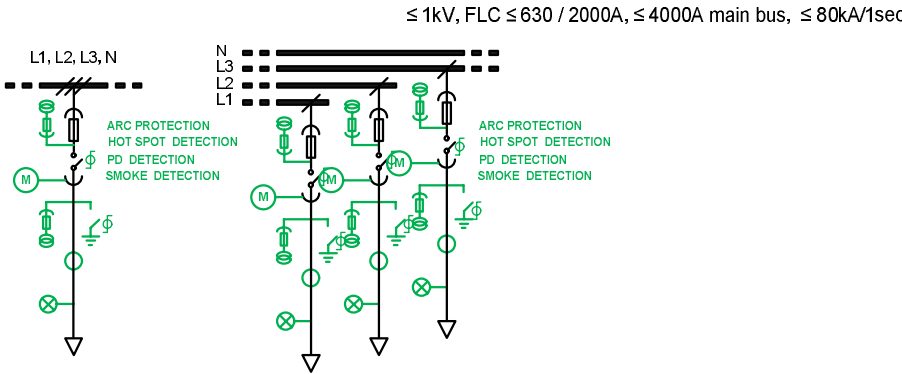
Front View



- Legend**
- Standard design
  - Optional feature

Max. panel depth  
Bottom power cable connection = 1124/1304 mm  
Top power cable connection = 1554 mm

Single Line Diagram



Equipment Schedule

Variant	VCZVC	VBZVC	VBZVC	VLZVC
Panel no.	-	-	-	-
Description	Fault Current Limiting Contactor	Fault Current Limiting Breaker	Fault Current Limiting Isolator	Fault Current Limiter
Current Limiting Interrupter	Fused Vacuum	Fused Vacuum	Fused Vacuum	Fused Vacuum
Full load current	≤ 630A (3ph set) ≤ 2000A (1ph set)	≤ 630A (3ph set) ≤ 2000A (1ph set)	≤ 630A (3ph set) ≤ 2000A (1ph set)	≤ 630A (3ph set) ≤ 2000A (1ph set)
Design standard	IEC / AS	IEC / AS	IEC / AS	IEC / AS
Arc fault containment	-	-	-	-
Loss of service continuity	-	-	-	-
Partition class	-	-	-	-
Degree of protection	-	-	-	-
Power cable connection	-	-	-	-

A1
1
Line L1, L2, L3
Fused Vacuum
≤ 630A
IEC / AS
AFLR / AFL
LSC2A
PM
IP4X
Bottom or Top

B1		
1	2	3
Line L1	Line L2	Line L3
Fused Vacuum	Fused Vacuum	Fused Vacuum
≤ 2000A		
IEC / AS		
AFLR / AFL		
LSC2A		
PM		
IP4X		
Bottom or Top		

**Disclaimer:** The shown product pictures are mainly for illustration of the proposed functionalities.  
The supplied goods might look different from the illustrations shown

Date 18 Feb 11 Scale NTS Fault Current Limiting Vacuum Interrupter

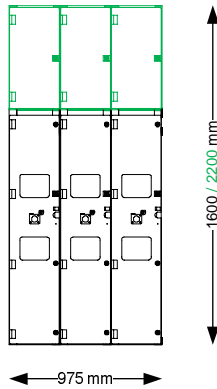
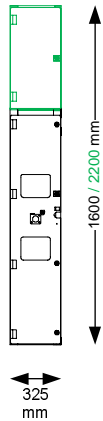
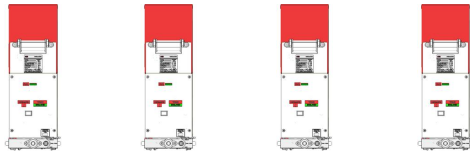
ABB Australia Pty Limited.

PANEL PROGRAM

Dwg # 1VGA674116 Rev. B Sh. 1 Dwn JO Chk SC



Front View

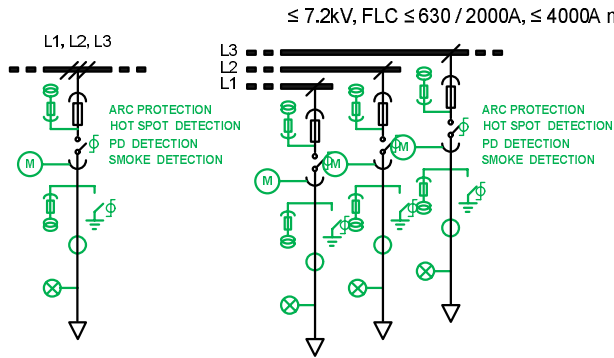


Legend

- Standard design
- Optional feature

Max. panel depth  
Bottom power cable connection = 1124/1304 mm  
Top power cable connection = 1554 mm

Single Line Diagram



Equipment Schedule

Variant	VCZVC	VBZVC	VBZVC	VLZVC
Panel no.	-	-	-	-
Description	Fault Current Limiting Contactor	Fault Current Limiting Breaker	Fault Current Limiting Isolator	Fault Current Limiter
Current Limiting Interrupter	Fused Vacuum	Fused Vacuum	Fused Vacuum	Fused Vacuum
Full load current	≤ 630A (3ph set) ≤ 2000A (1ph set)	≤ 630A (3ph set) ≤ 2000A (1ph set)	≤ 630A (3ph set) ≤ 2000A (1ph set)	≤ 630A (3ph set) ≤ 2000A (1ph set)
Design standard	IEC / AS	IEC / AS	IEC / AS	IEC / AS
Arc fault containment	-	-	-	-
Loss of service continuity	-	-	-	-
Partition class	-	-	-	-
Degree of protection	-	-	-	-
Power cable connection	-	-	-	-

A6
1
Line L1, L2, L3
Fused Vacuum
≤ 630A
IEC / AS
AFLR / AFL
LSC2A
PM
IP4X
Bottom or Top

B6		
1	2	3
Line L1	Line L2	Line L3
Fused Vacuum	Fused Vacuum	Fused Vacuum
≤ 2000A		
IEC / AS		
AFLR / AFL		
LSC2A		
PM		
IP4X		
Bottom or Top		

**Disclaimer:** The shown product pictures are mainly for illustration of the proposed functionalities.  
The supplied goods might look different from the illustrations shown

Date 18 Feb 11 Scale NTS Fault Current Limiting Vacuum Interrupter

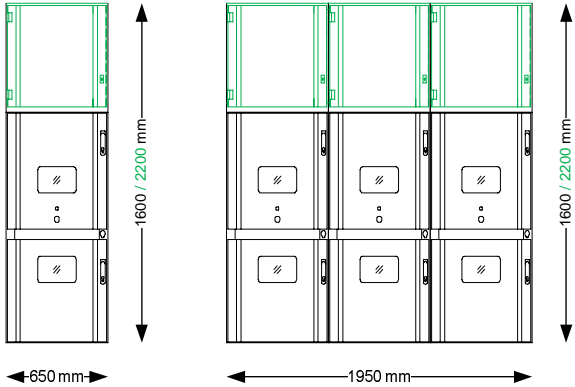
ABB Australia Pty Limited.

PANEL PROGRAM

Dwg # 1VGA674116 Rev. B Sh. 2 Dwn JO Chk SC



Front View



Legend

—

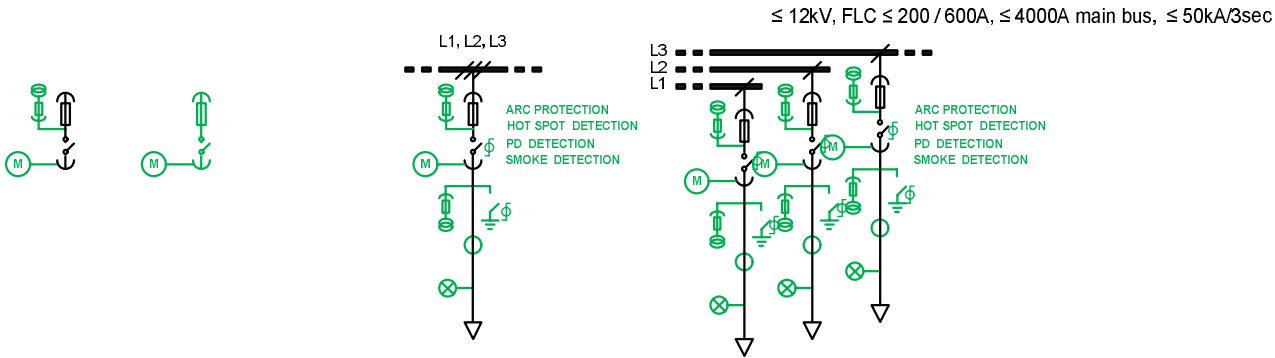
Standard design

—

Optional feature

Max. panel depth  
Bottom power cable connection = 1340 mm  
Top power cable connection = 1800 mm

Single Line Diagram



Equipment Schedule

Variant	VSC/ZVC	VSC/ZVC
Panel no.	-	-
Description	Fault Current Limiting Contactor	Fault Current Limiter
Current Limiting Interrupter	Fused Vacuum	Fused Vacuum
Full load current	≤ 200A (3ph set) ≤ 600A (1ph set)	≤ 200A (3ph set) ≤ 600A (1ph set)
Design standard	IEC	IEC
Arc fault containment	-	-
Loss of service continuity	-	-
Partition class	-	-
Degree of protection	-	-
Power cable connection	-	-

A12
1
Line L1, L2, L3
Fused Vacuum
≤ 200A
IEC
AFLR / AFL
LSC2A
PM
IP4X
Bottom or Top

B12		
1	2	3
Line L1	Line L2	Line L3
Fused Vacuum	Fused Vacuum	Fused Vacuum
≤ 600A		
IEC		
AFLR / AFL		
LSC2A		
PM		
IP4X		
Bottom or Top		

**Disclaimer:** The shown product pictures are mainly for illustration of the proposed functionalities.  
The supplied goods might look different from the illustrations shown

Date18 Feb 11ScaleNTSFault Current Limiting Vacuum Interrupter

ABB Australia Pty Limited.

PANEL PROGRAM

Dwg #1VGA674116Rev. BSh. 3Dwn JOChk SC

