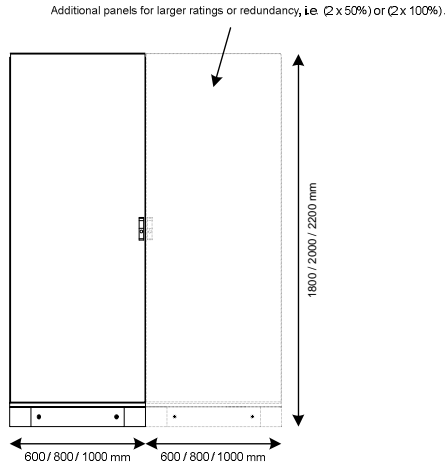
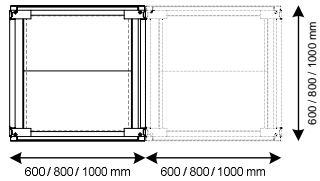


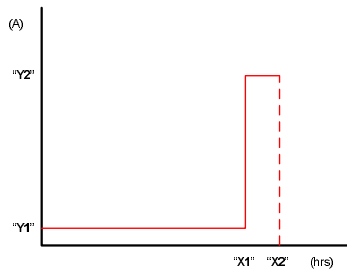
Front View



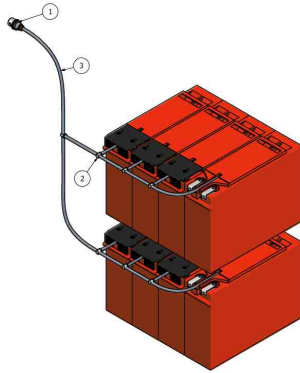
Floor Plan



Load Profile

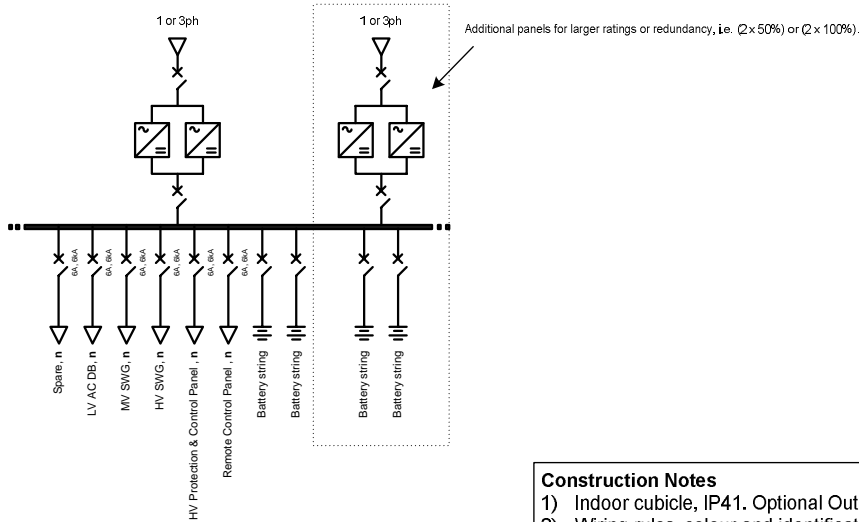


Venting of Hydrogen Gas (Ducted battery pipes or seal compartment tubes available)



ITEM		STOCK NUMBER	QTY	DESCRIPTION
1	BATT BREATH 25		1	BATTERY BREATHER 25MM
2	0400.60.3500		7	TEE 6x6x6
3	3800.60.0000		3.5	6MM TUBING

Single Line Diagram



Design Notes

- 1) Batteries to be either sealed lead acid, nickel cadmium or lithium-ion.
- 2) Batteries arrangement shall be parallel strings for redundancy.
- 3) Ducted ventilation may be required for seal lead acid batteries depending on switchroom air-intake.
- 4) Autonomy time as per "X2" or 2 hrs minimum.
- 5) Switch-mode Rectifier (SMR) shall be 1ph or 3ph depending on rating.
- 6) Battery system controller can be separate or integrated in Charger.
- 7) Controller shall be equipped with Ethernet port.
- 8) Earth lugs fitted to frame.
- 9) Load Distribution Board is integrated in BCP panel.
- 10) Refer technical offer for n, X1, X2, Y1, Y2 value.

Construction Notes

- 1) Indoor cubicle, IP41. Optional Outdoor version IP56.
- 2) Wiring rules, colour and identification to AS 3000 and AS 2067.
- 3) Cabinet is floor standing construction.
- 4) Cabinet have top / bottom power cable entry.
- 5) Fitted with eye bolts Rittal model No. PS-4568.000 or equivalent.
- 6) Heat loss = 200W each cabinet.
- 7) Weight = 800kg each cabinet.

Disclaimer: The shown product pictures are mainly for illustration of the proposed functionalities.
The supplied goods might look different from the illustrations shown

Date 28 Aug 11 Scale NTS Battery Charger Panel

ABB Australia Pty Limited.

PANEL PROGRAM

Dwg # 1VGA674129 Rev. E Sh. 1 Dwn JO Chk SC

