

LeanGear ZS9

Arc-proof Air-insulated Switchgear for Primary Distribution
12kV 630...2000A 25kA



01

01 LeanGear ZS9
indoor switchgear

Main benefits

- **Safety:** Increased safety level assured by integrated ducting system against effects of internal arc
- **Security:** Comprehensive interlocks provide optimum protection for both personnel and equipment
- **Space:** Maximum functionality in a compact design with reduced footprint and height
- **Service:** Ease of service and operation by personnel as switchgear and cable termination height are ergonomically designed
- **Speed:** Minimal service downtime attributable to modular circuit breaker design and built-in features that eliminate use of special handling tools
- **Strength:** Robust panel structure that is proven against external mechanical impacts

LeanGear ZS9 is an arc-proof air-insulated switchgear designed to meet space requirements and ratings of low electrical distribution grids.

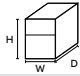
It offers optimal safety and reliability standards, consistent with the ABB's UniGear range of switchgear. With a proven robustness and flexibility, the LeanGear ZS9 is tested for tropical conditions.

Main features

- Type-tested to IEC standard by STL lab
- Internal arc classification IAC AFLR 25kA 1s
- Classified as LSC2B, PM
- Up to 1250A, proven for severe climatic conditions compliant to IEC 62271-304 Class 2
- CB racking with closed door
- Cable termination height of 700 mm
- IP4X degree of protection
- Extensible on both sides
- Integrate with ABB Relion® series relay for protection and control
- For Higher Altitude contact ABB

Vind/L circuit breaker

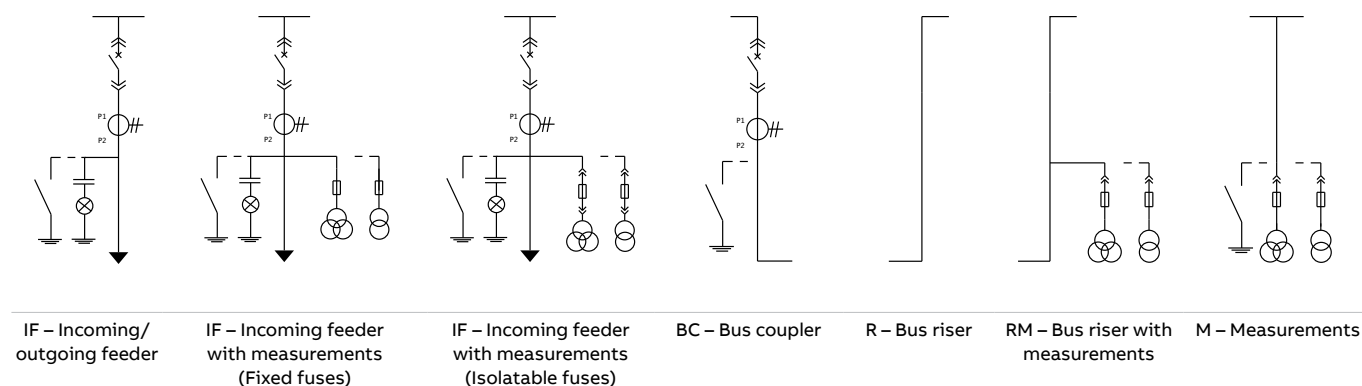
- Floor-rolling circuit breaker
- Suitable for E2, M2, and C2 endurance class application
- Integral spring charging handle
- Built-in mechanical anti-pumping device

Technical data	Units	Rating	Rating
Rated voltage	[kV]	12	12
Rated power frequency withstand voltage	[kV 1 min]	28/38	28
Rated lightning impulse withstand voltage	[kV]	75/95	75
Rated frequency	[Hz]	50	50
Rated short time withstand current	[kA 3 s]	25	25
Peak current	[kA]	63	63
Rated main busbar current (40°C)	[A]	800/1250	2000
Rated branch connection current (40°C)	[A]	630/1250	2000
Internal arc withstand current	[kA 1 s]	25	25
Internal arc classification to IEC 62271-200		IAC AFLR	IAC AFLR
Overall dimensions of basic cubicles		H[mm]	1755
		W[mm]	600
		D[mm]	1560...2070 ¹⁾
			2235
Degree of protection (internal and external)		IP4X ²⁾	IP4X ²⁾
Cable connection height	[mm]	700	700
Approximate weight	[kg]	600	1000

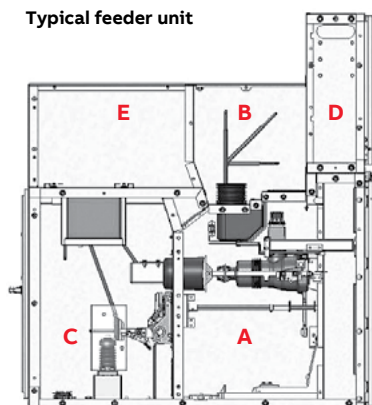
¹⁾ Varies according to the configuration

²⁾ Higher rating up to IP42 external degree of protection available on request

Single line diagram of typical units



Typical feeder unit



- A: Circuit breaker compartment
- B: Busbar compartment
- C: Cable compartment
- D: Low voltage compartment
- E: Integral panel gas duct

For more information please contact:

ABB Malaysia Sdn Bhd (210262-T)

Lot 608, Jalan Lagoon Selatan
Bandar Sunway 47500
Subang Jaya Selangor, Malaysia
Phone: +603 5628 4888
Contact Center: 1-800-222-2273

ABB India Limited

Plot No. 79, Street No. 17, MIDC Estate
Satpur, Nashik 422007, Maharashtra, India
Customer Support: 1-800-420-0707
Customer Support: ppmvsupport@in.abb.com

abb.com/mediumvoltage

abb.com/contact

We reserve the right to make technical changes or modify the contents of this document without prior notice. With regard to purchase orders, the agreed particulars shall prevail. ABB MY does not accept any responsibility whatsoever for potential errors or possible lack of information in this document.

We reserve all rights in this document and in the subject matter and illustrations contained therein. Any reproduction, disclosure to third parties or utilization of its contents – in whole or in parts – is forbidden without prior written consent of ABB MY. Copyright© 2020 ABB
All rights reserved.

