

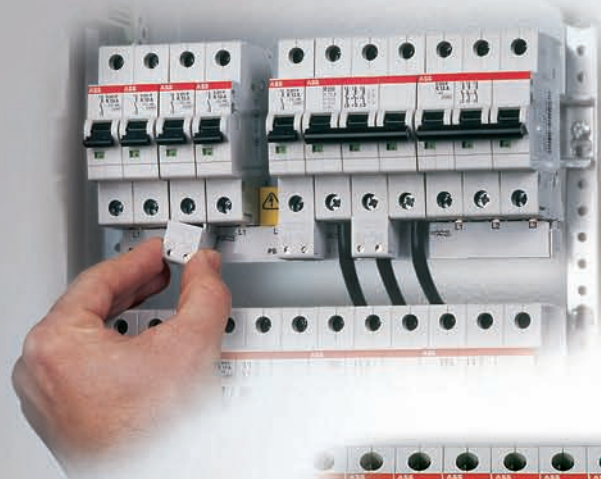
Flexible and cost-efficient retrofitting auxiliary switches for System pro M compact®

For many years, **System pro M compact®** MCBs, with a factory fitted auxiliary switch, have been used successfully for railway applications, telecommunications, switchgear and controlgear and machinery engineering.

Now, auxiliary switches S2C-H10 (1 NO) and S2C-H01 (1 NC) can also be retrofitted.

They can be mounted individually and without modification of the existing busbar. At the same time, the supply of the MCB remains unaffected.

Compared to the standard, lateral installation method, these are the following new advantages:



The integrated auxiliary switch can be retrofitted from below.

Retrofitting without modification of busbar.

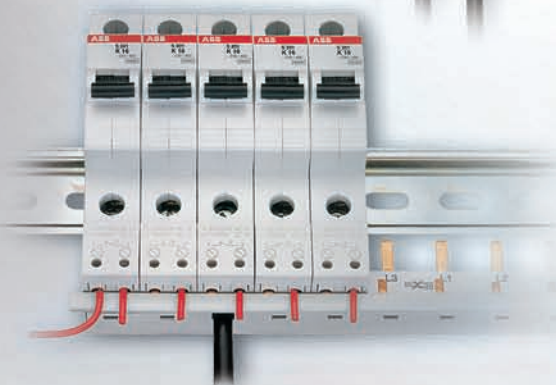
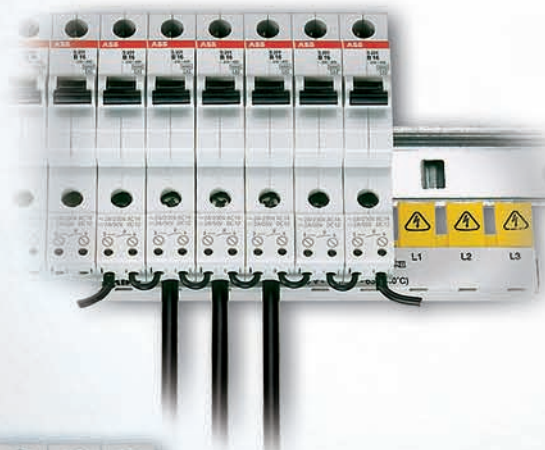
50% space saved.

Use of standard busbars with 17.5 mm grid possible.

Time- and cost-efficient wiring through easy contact bridges HKB for group signal.

Time- and cost-efficient wiring through single-pole busbar, e.g. PS 1/57/6 for individual signal.

Signaling
Leading make contact, late opening, thus no fault signal.



Änderungen vorbehalten

(03/08 • 2 • ZVD)

Druck-Nr. 2CDC 002 026 B0203

ABB

ABB STOTZ-KONTAKT GmbH

P.O. Box 101680, D-69006 Heidelberg, Germany
Eppelheimer Straße 82, D-69123 Heidelberg, Germany
phone ++49 (0) 6221-701-748
fax ++49 (0) 6221-701-610
www.abb.de/stotz-kontakt

Technical Information

System pro M compact®

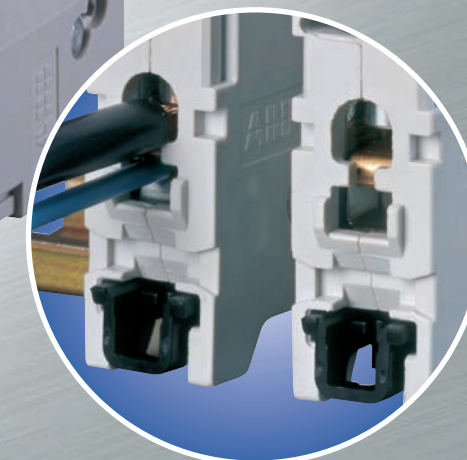
New cost saving possibilities
for planning and commissioning



IP XX B



With add on
auxiliary switch
50% space saving



Dual-Terminal
Different cross-sections
can be connected

ABB

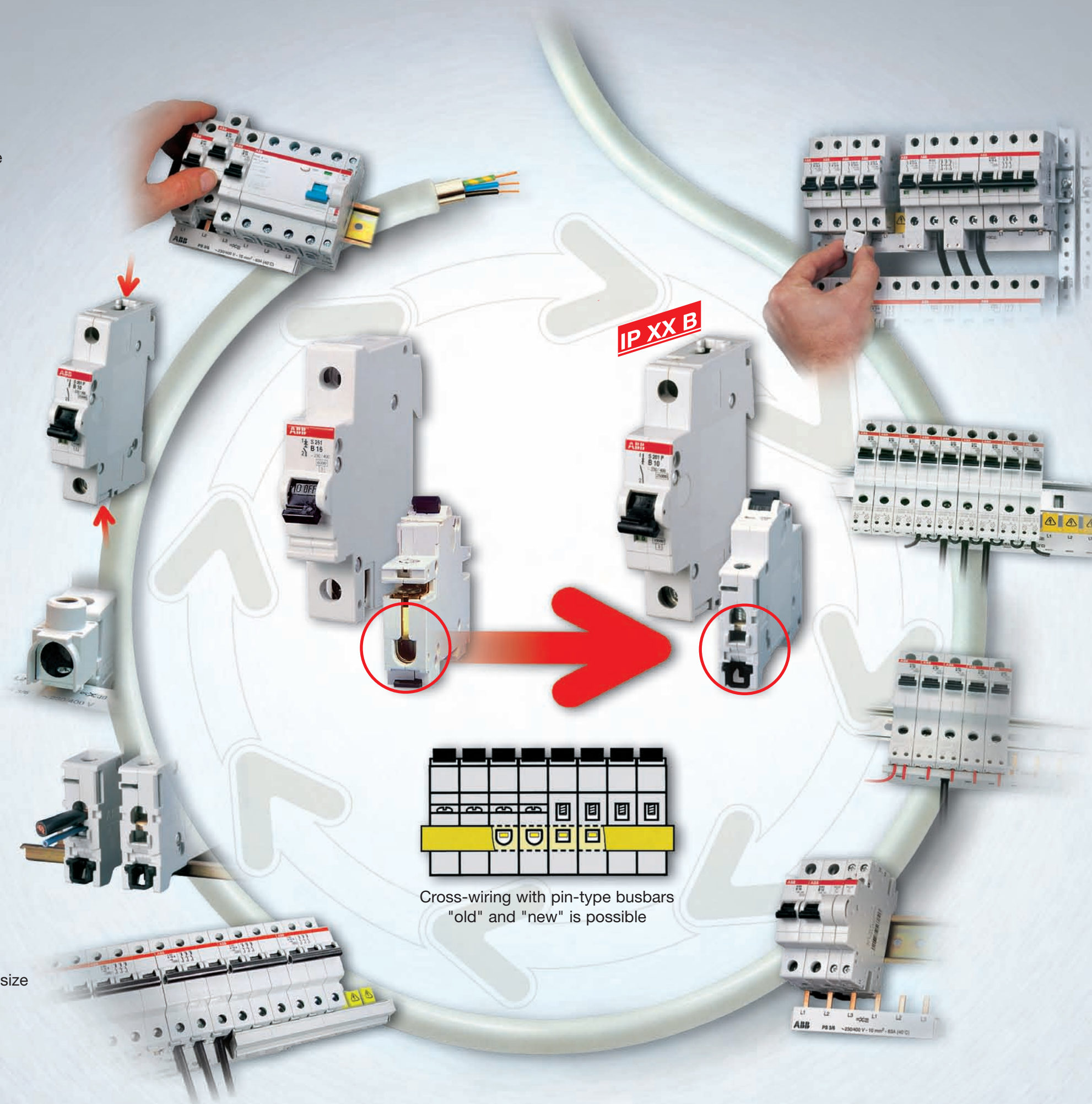
System pro M → pro M compact® are compatible.

Mounting

- Special fastening for an easy removal of the device out of the assembly – simply press upwards

Terminal technology

- Supply from top or bottom
Busbars top or bottom
- Incoming supply with supplementary terminal up to 50 mm² from the front or the side
- Without busbars 2 terminal sections can be used e.g. for different cross sections
Fail safe connections
- Extensions with non cutable standard busbars
For flexible use:
meter length busbar cutable to size



New auxiliary switch

- Existing installations can always be easily upgraded to include auxiliary switch functionality
- Contact bridges for easy series connection enable time- and cost-efficient wiring (closed circuit principle = group signal)
- With auxiliary contact busbars PS... for S 201-...-H01 for parallel wiring (Working current principle = Individual signal)

Signaling

- closing first
- opening last
- S 200-... with auxiliary contacts
2 changeover for 24 V DC and 230 V AC
in the 17.5 mm - modul



Cross-wiring with pin-type busbars
"old" and "new" is possible