

TYPE APPROVAL CERTIFICATE
No. ELE168810CS

This is to certify that the product below is found to be in compliance with the applicable requirement of the RINA type approval system.

<i>Description</i>	Circuit breaker
<i>Type</i>	S200 ; S200 M ; S200 P
<i>Applicant</i>	ABB STOTZ-KONTAKT GMBH Eppelheimer Str. 82 69123 Heidelberg GERMANY
<i>Manufacturer</i>	ABB STOTZ-KONTAKT GMBH
<i>Place of manufacture</i>	Eppelheimer Str. 82 69123 Heidelberg GERMANY
<i>Reference standards</i>	IEC 60898-1

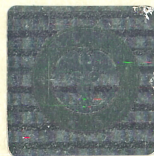
Issued in **Genoa** on **May 17, 2010**. *This Certificate is valid until* **May 17, 2015**

RINA
Valerio Bonanni



This certificate consists of this page and 1 enclosure (2 pages).

Type Approval certifies that a representative sample of the product has been found to meet the applicable design criteria. In the case the Manufacturer intends to modify a certified product, the Society is to be informed on all the contemplated modifications.



TYPE APPROVAL CERTIFICATE

No. **ELE168810CS**

Enclosure - Page 1 of 2

S200 ; S200 M ; S200 P

Product Description

Circuit breakers type S20., S20. P, S20. M for use restricted to panels for distribution in accommodation areas.

Technical Data

- Rated frequency: 50/60 Hz.
- Number of poles: 1, 2, 3, 4.
- Rated operational voltage (Ue): 230/400V.
- Tripping characteristics: B, C, D.
- Rated current (In).
- Rated short-circuit capacity (Icn).

S201 / S202 / S203 / S204

	In (A)	Icn (kA)
B	6-63	6
C	0,5-63	6
D	0,5-40	6

S201 M / S202 M / S203 M / S204 M

	In (A)	Icn (kA)
B	6-63	10
C	0,5-63	10
D	0,5-40	10

S201 P / S202 P / S203 P / S204 P

	In (A)	Icn (kA)
B	6-25	25
C	0,5-25	25
B & C	32-63	15
D	0,5-25	25



TYPE APPROVAL CERTIFICATE

No. ELE168810CS

Enclosure - Page 2 of 2

S200 ; S200 M ; S200 P

Remarks

The product is subject to the compliance with RINA Rules Pt.C, Ch.3, Sec.6, Tab.1, where applicable, and with the Standard mentioned on the certificate.

Genoa May 17, 2010