

Important Settings in AutoCAD/SafeCAD before use

Some settings in AutoCAD®/SafeCAD has to be changed; otherwise SafeCAD might not work properly.

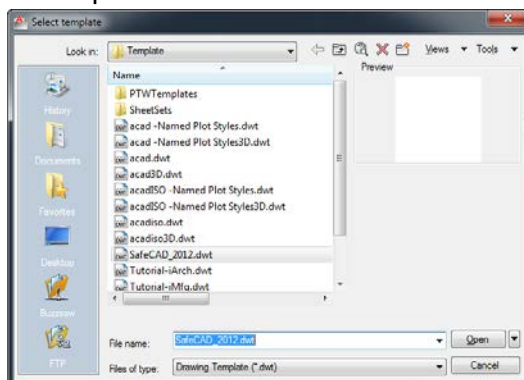
1. Forced settings

- 1.1. SafeCAD doesn't work properly if AutoCAD Mechanical application is loaded. If "AutoCAD Mechanical" is shown on top of AutoCAD's program window, AutoCAD must be closed. Then, open basic AutoCAD from start menu and make sure that "Mechanical" isn't shown in AutoCAD's program window. Close AutoCAD and start SafeCAD program from program shortcut on desktop. Make sure that "Mechanical" isn't shown in AutoCAD's program window.
- 1.2. Type "UCSORTHO" at command prompt and press enter, set variable to "0"
- 1.3. "OSNAP" must be turned off when creating or editing fence.

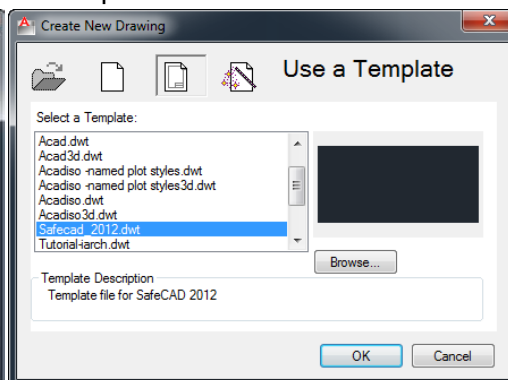
2. Optional settings

- 2.1. Type "COORDS" at command prompt and press enter, set variable to "2"
- 2.2. Type "STARTUP" at command prompt and press enter, set variable to "1". This variable sets style of the window shown when creating a new drawing. See pictures below.

"Startup" set to "0"



"Startup" set to "1"



- 2.3. Create and use a template file for SafeCAD drawings. Template files in AutoCAD are stored in
"C:\Users\UserName\AppData\Local\Autodesk\AutoCAD [version]\R[]\enu\Template".
Remark: File search path can be different depending on used AutoCAD version

Note!

Pictures and other content in this document might look different on your computer, depending on e.g. AutoCAD version, program and system settings.