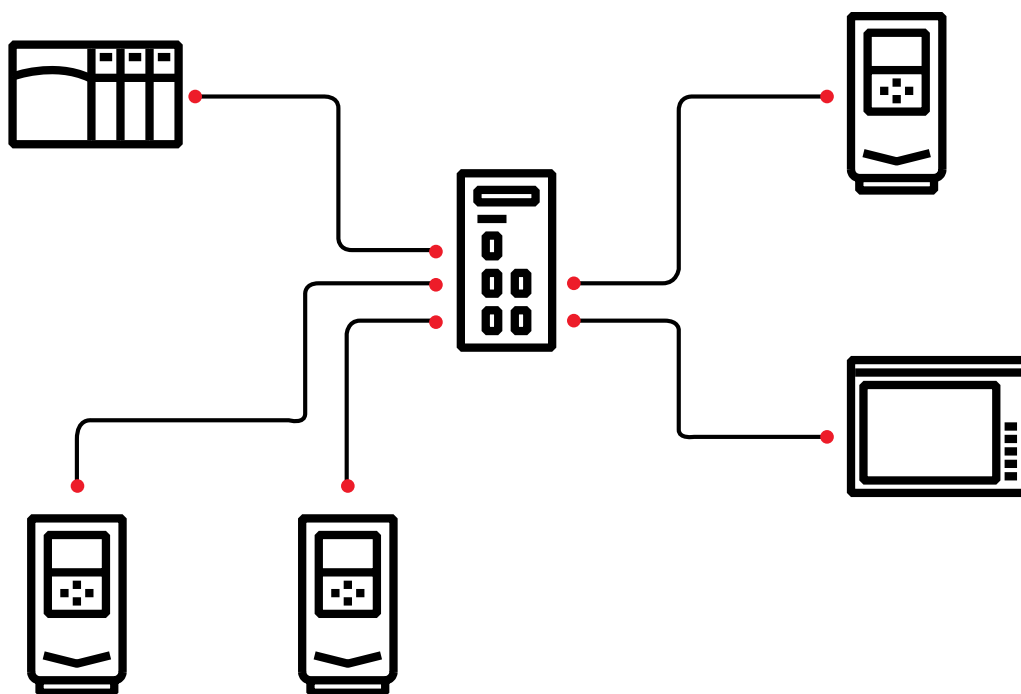


## Let's communicate.

### EtherNet/IP connectivity solution



There are numerous communication networks available. Your current system is likely based on a choice made long ago. That does not mean you are stuck with the antiquated or underperforming drives you originally chose. As drive technology experts, ABB understands that your system is only as reliable as its weakest link. That is why we have made it exceedingly easy for you to integrate ABB drives into your solution without having to replace the whole system. We provide ease of integration and reliability through our quality drive products to ensure your system performs optimally.

#### Drop-In connectivity

ABB has been speaking EtherNet/IP for more than a decade. We've made it incredibly easy to connect ABB drives to EtherNet/IP™ and ControlNet™ networks. Simply drop ABB's Add-On Instructions (AOIs) into your code and your tag descriptions are defined automatically. The result: your development time is minimized; commissioning is streamlined, and troubleshooting becomes very efficient. And the conversation doesn't stop there. For mission-critical applications, we have solutions that interface with EtherNet/IP Device Level Ring (DLR) for a system you can count on.

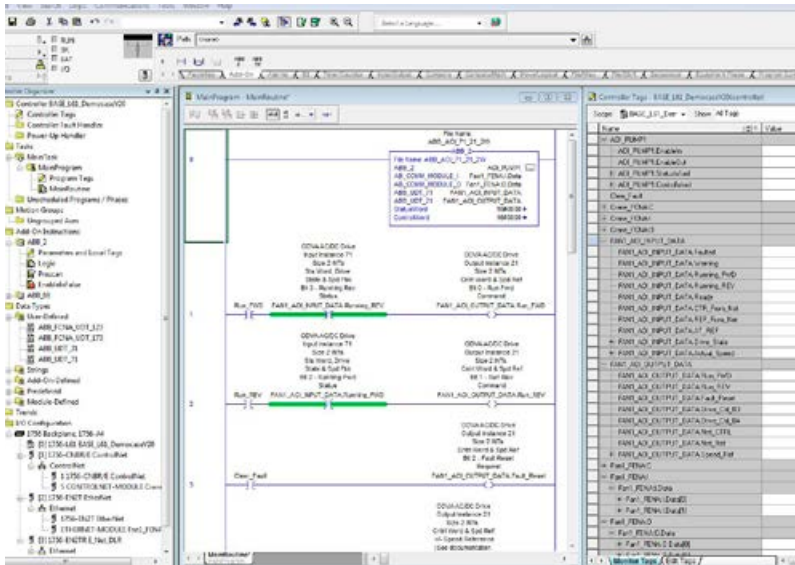
With a variety of predesigned and tested sample programs, you can update your system to integrate ABB products to easily create the ultimate solution with optimum performance for your application.

#### Reliability

ABB provides reliable solutions that you can count on. ABB drives leverage a common platform and functionality providing a consistent user experience. Preventive maintenance keeps your application humming and planned obsolescence and upgrades minimize downtime. You can even leverage local support for help with system upgrades.

#### Domain expertise

ABB is an industry leader when it comes to variable frequency drives technology, communications, drive applications, harmonic mitigation, bearing currents, and more, and we gladly share that knowledge with our customers. Factory and local resources are readily available on a continuous basis to assist with design issues, enabling you to leverage our products efficiently.



01

—  
01 Add-On  
Instructions (AOI)  
—  
02 EtherNet/IP Device  
Level Ring (DLR)

ABB maintains a network connectivity applications lab with dozens of communication nodes on EtherNet/IP and other network protocols that is available to assist with project design and proof of concept, system configuration, and troubleshooting. A wide array of training is also available to better understand the implications of the technology you are using.

### Support

When it comes to support, we realize that having it when you need is critical to your success. ABB provides technical support along with local field service experts that are available upon request.

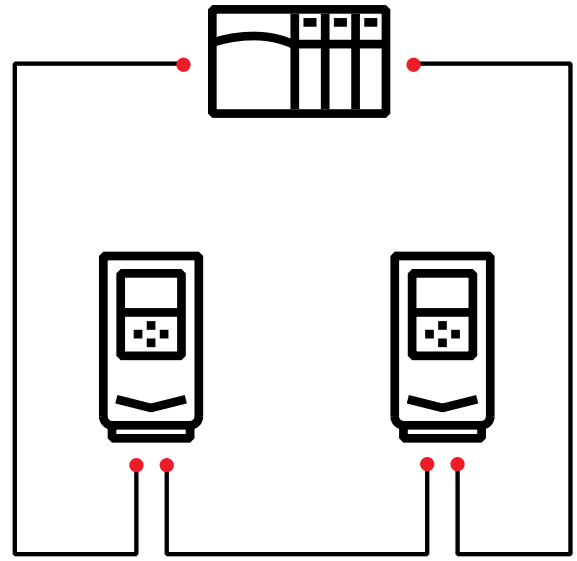
### Availability

If keeping your system running keeps you up at night, you will be relieved to know that many ABB products are stocked and serviced locally, which means they're available when and where you need them. In the case that the particular product you need is not in stock, ABB's highly efficient factory enables products to be available with short lead times.

For more information contact your local ABB representative or visit:  
[www.abb.com/drives](http://www.abb.com/drives)  
[www.abb.com/drivespartners](http://www.abb.com/drivespartners)  
[www.abb.com/motors&generators](http://www.abb.com/motors&generators)

We reserve the right to make technical changes or modify the contents of this document without prior notice. With regard to purchase orders, the agreed particulars shall prevail. ABB AG does not accept any responsibility whatsoever for potential errors or possible lack of information in this document.

We reserve all rights in this document and in the subject matter and illustrations contained therein. Any reproduction, disclosure to third parties or utilization of its contents – in whole or in parts – is forbidden without prior written consent of ABB AG. Copyright © 2017 ABB. All rights reserved.



02

**Find out more**  
[www.abb.com/drives/connectivity](http://www.abb.com/drives/connectivity)