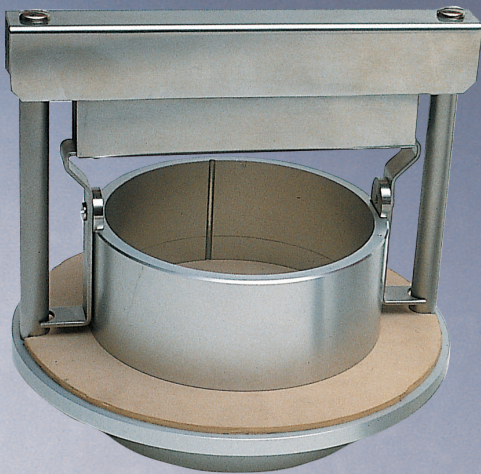


PULP AND PAPER

## L&W Cobb Sizing Tester

Lorentzen & Wettre Products | Paper testing



L&W Cobb Sizing Tester measures the weight increase of a sample, when exposed to water for a given time.

—  
L&W Cobb Sizing Tester is also available in a special version with rubber gasket for corrugated board.

Sizing and absorption are important properties, not only for writing and printing results, but also for the appearance of the material after handling and practical use in real life. This method for measuring water absorption of sized papers is used all over the world.

### Simple operation

The procedure, including the duration of certain stages, is specified in each standard. A dry test piece of suitable size is weighed and placed under the cylinder. Then 100 ml of water is poured over the test piece. After a specified time the water is poured off and the test piece is placed on a standardized blotting paper.

Another blotting paper is placed on top of the test piece and the excess water is removed by means of the couch roller. The test piece is weighed again and the results are calculated and reported as absorptiveness in grams, per m<sup>2</sup> according to the standard method.

### Benefits

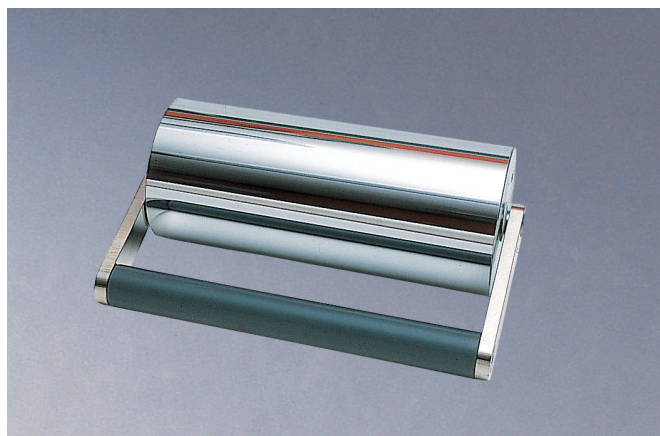
- Single handed operation
- Fast locking of the sample
- Couch roll is included
- L&W Cobb Sizing Tester is also available in a special version with rubber gasket for corrugated board

**DEFINITION**

Water absorptiveness/Cobb value,  
according to ISO 535:

The calculated mass of water absorbed in a  
specified time by 1 m<sup>2</sup> of paper or board under  
specified conditions.

The test area is normally 100 cm<sup>2</sup> (ISO 535).



The couch roll that helps to remove the excess water is included in the delivery.

Technical specifications – L&W Cobb Sizing Tester, code 146			
Inclusive	Couch roll		
Instrument			
Test area	100 cm²		
Level indication	Indication for 100 ml on the inside of the cylinder		
Dimension cylinder	Diameter 200 mm, height 200 mm (7,9 × 7,9 in)		
Dimension couch roll	Diameter 88 mm (3.6 in), width 210 mm (8,3 in), weight 10 ± 0,5 kg		
Results			
Measurement values	- water absorptiveness (Cobb value)		
Option			
Version for corrugated board	Maximum thickness of corrugated board is 15 mm. Equipped with rubber gasket at the bottom of the cylinder.		
Dimensions	0.3 × 0.3 × 0.5 m	Volume	0.05 m³
	12 × 12 × 20 in		1.8 ft³
Net weight	13 kg	Gross weight	18 kg
	29 lb		40 lb
Applicable standards			
APPITA/AS 1301.411, CPPA F.2, DIN 53132, FEFCO No 7, ISO 535, SCAN P 12, TAPPI T 441, EN 20535			
Related standards			
SCAN P 18, TAPPI T 458			