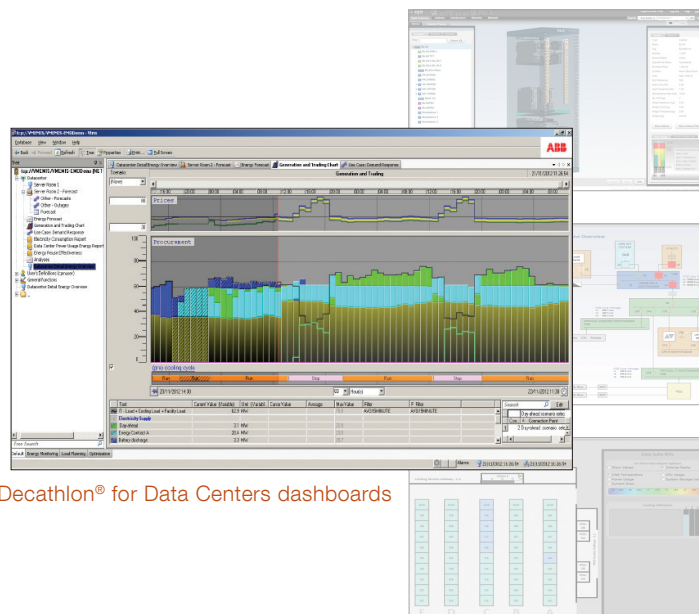


# Decathlon® for Data Centers v3

## Data center infrastructure management

Decathlon® for Data Centers provides the operational intelligence and process automation for an agile business.

With Decathlon, data centers deliver services faster, in the most reliable and efficient way possible, supporting business initiatives that demand aggressive, yet sustainable growth.



Decathlon® for Data Centers dashboards

### How it works

Decathlon provides the visibility, decision support, and centralized monitoring and controls to better manage data center operations enterprise-wide.

Decathlon employs appliances using a variety of communication protocols to collect system performance, power draw and environmental data from facility and IT equipment. The appliances provide data used by the on-premise Decathlon Command Center and the optional Decathlon Web Portal where the information is correlated, analyzed and presented for status visualization, decision support, secure process automation and reporting. Decathlon also issues alerts via a centralized notification engine.

### Open platform and modular approach

Decathlon's open platform allows broad integration with application and equipment so the data center strategy can evolve with the enterprise, not with the vendor. Its scalable, modular approach adapts to the data center's operational maturity. Primary modules include:

#### Decathlon Command Center (DCC)

The DCC is an on-premise console for real-time data center control and operations. Monitor and manage data center operations enterprise-wide through dynamic dashboards and secure, automated systems. Proactively optimize and manage both IT and facility infrastructure requirements at component, device and system levels.

DCC key features in Decathlon for Data Centers v3:

- User-configurable dashboards
- Standard and custom reports
- Unified alarm management
- Condition-based monitors to identify diagnostic, predictive or inferred faults
- Fault report submittal to user-specified Computerized Maintenance Management System
- Integrated web views of the Decathlon Web Portal and Decathlon asset management tools

#### Decathlon Web Portal (DWP)

The DWP presents essential data center utilization metrics such as power usage effectiveness (PUE) and water usage effectiveness (WUE). An IT analytics engine also is available to identify candidate servers for consolidation or refresh, including return on investment analysis to support decision making.

#### Asset management

By Nlyte Software: Optimization of space, power and cooling capacity through intelligent placement of IT assets. Perform modeling and what-if analyses and automate and manage workflow processes.

#### Energy management

Forecasting and optimization of energy usage based upon historical trends, predicted maintenance and weather conditions. Provides guidance by comparing the forecast with contractual energy rates to reduce energy bills.

### Power management

Centralized monitoring and control of devices, power systems and meters, including substation, microgrid and on-site power generation, to ensure safe and reliable power distribution and consumption.

### Building management

Centralized monitoring and control over facility systems, such as chillers, computer room air conditioning (CRACs) and the electromechanical plant, as well as environmental and other physical factors.

### Highly secure system

Decathlon is designed and built for highly secure, mission critical environments where cyber-attacks are expected, such as power plants and data centers. It is built to protect against attacks, prevail through disaster recovery and uphold efficient and secure system management. The architecture and code have been developed using processes and principles, such as threat modeling, defense in depth and security zones, which detect and analyze threats and remove vulnerabilities. After installation, the system defaults to a minimal attack surface by automatically disabling unused functions.

Furthermore, all new products and product versions are tested by the ABB Device Security Assurance Center. This is a laboratory run by dedicated personnel, independent of the development teams, using specialized tools for both industrial- and military-grade secure testing, such as Wurdtech Achilles Satellite and Spirent Mu-8000. ABB actively upholds evolving security standards, such as IEC62443 and ISA 99, among others.

## System appliances

### D201

This panel-mount industrial-suited appliance hosts the Decathlon Command Center server application running on Windows 7® Ultimate (64 bit) operating system. The unit is 4.30 X 15.61 X 13.75 inches (109.1 X 396.5 X 349.1 mm) and weighs 27 lbs. (12.25 kg). It comes with 8 GB of RAM, 500 GB of hard disk space, 2 NICs and 6 USB ports.

### D202

This rack mount appliance performs the same functions as the D201 but it runs on Windows Server 2008 R2 SP1, Standard Edition operating system. The unit is a 1U appliance, 19-inch rack mountable, sized at 19 X 1.67 X 16.90 inches (482.6 X 42.4 X 429.3 mm) and weighs 17.76 lbs. (8.05 kg). It comes with 8 GB of RAM, 1 TB of hard disk space, 2 NICs and 6 USB ports.

### D102

This rack mount appliance forwards IT data to the Decathlon Secure Cloud. It runs on OpenSuse Linux Enterprise 11.3 operating system. The unit is a 1U appliance, 19-inch rack mountable, sized at 17.3 X 1.7 X 14.5 inches (439.4 x 43.2 x 368.3 mm) and weighs 20 lbs. (9.09 kg). It comes with 12 GB of RAM, 1 TB of hard disk space, 2 NICs and 4 USB ports.

## How to buy

- **Perpetual license** – A one-time single system fee with a separate annual maintenance fee.
- **Annual subscription license** – Tiered pricing based on the functional modules selected and data center size.

Note: All software is scaled on megawatt (MW) capacity.

**Decathlon® for Data Centers v3**  
[www.abb.com/decathlon-datacenters](http://www.abb.com/decathlon-datacenters)