

ABB Ability™ Field Information Manager 3.0

Device management made easy



ABB Ability™ Field Information Manager is the device management tool of choice for configuration, commissioning, diagnostics and maintenance of fieldbus instruments.

The new FIM 3.0 release includes major feature additions with new client/server architecture, multi-user support, more field connectivity and strengthened Ethernet-APL support.

ABB's Field Information Manager initiates a paradigm change for configuration and parametrization of Fieldbus devices. The tool is very easy to install and has innovative and intuitive navigation and an adaptive user interface.

This makes configuration, commissioning, diagnostics, and maintenance of field instruments faster and easier than ever before.

FIM provides integration with System 800xA and Symphony Plus thus FIM becomes a comprehensive integrated device management tool for ABB DCS. In addition FIM provides a wide range of connectivity options for PROFINET, PROFIBUS, HART IP, HART (including multiplexers) and also 3rd party PLC thus FIM can easily fit into an existing system landscape.

FIM can also be installed as a standalone device management tool leveraging the various field connectivity.

Additionally, FIM provides OPC UA server interface to support digitalization and asset management applications.

Key features

- **High performance UX** - Innovative graphical user interface for all purposes.
- **Flexible installation** - Can be quickly installed on Windows tablets and computers.
- **One tool for all device applications** - Works with FDI as well as EDD.
- **Quick to start** - Scans, identifies & enables access to devices within 3 minutes.
- **Online drivers' repository** - Eliminates the trial & error search of device drivers.
- **"Zero configuration"** - Topology with scanning, auto-detect and assignment of device packages to field devices.
- **Bulk device configuration & commissioning** - Enables bulk device configuration.
- **Automated loop check functions** - Hands-free, multi-point smart-sensor loop-checks, testing and reporting.
- **Auto generated documentation** - Loop and alarm check documentation for project management.
- **Wide range of field protocols support** - HART, HART-IP, PROFIBUS, PROFINET and ASi-5.
- **Asset management opportunities** - Connect to ABB Ability™ Edgenius and Genix APM Predict through OPC UA.
- **Enabling digital transformation** - PA Profile 4.02 and PA-DIM support is a key specification for standard data exchange and enabling digital transformation of field device networks.

FIM 3.0 additions

Client/Server architecture including multi-user support allows several users to perform device management activities in parallel thus significantly improves efficiency during configuration/commissioning/maintenance of field devices compared to one single user. FIM server can be installed on server operating system. FIM clients can be installed on 800xA/S+/Freelance Engineering Workplaces to achieve more streamlined workflows. A new installer supporting the different server/client installation use cases is also introduced.

Support for ASi-5 protocol enables FIM as device management tool for ASi-5 devices. ASi-5 devices are accessed through an ASi-5 gateway connected via an existing FIM connectivity e.g., FIM Bridge PROFINET.

Support for integration of RS232/485 connected HART multiplexers using Thorsis isHMuxGate HART-IP gateway enables connectivity to a large installed base of multiplexers from e.g., Pepperl+Fuchs, MTL and other vendors. Please refer to the Thorsis isHMuxGate datasheet for the full list of supported HART multiplexers.

FIM Bridge for Rockwell 1756 EtherNet/IP extends FIM to become a common device management tool for ABB DCS and Rockwell Allen Bradley PLCs. Many times, OEM packages to be integrated into System 800xA comes with Rockwell Allen Bradley PLCs.

PA Profile 4.02 device package achieves interoperability between devices from different vendors and engineering efficiency. Using PA Profile 4.02 potentially up to 80% of the devices can use this generic profile and a specific profile/device package is required only for the remaining part of more specific/complex devices. PA Profile 4.02 is typically used with Ethernet-APL PROFINET devices.

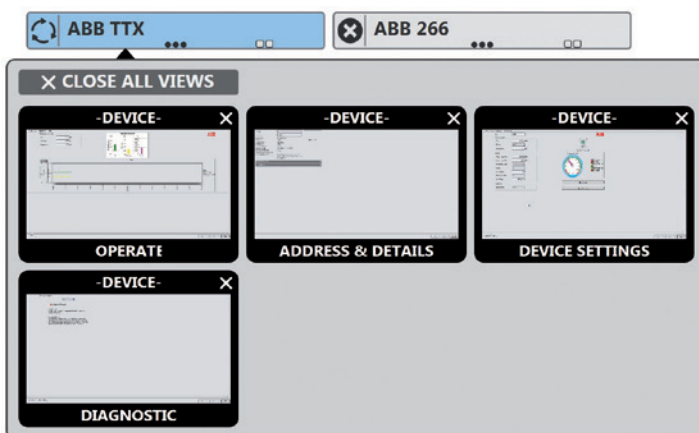
Offline Configuration of FIMlets for e.g., Ethernet-APL field switches enables similar device management functionalities also for field gateways. Thus, achieving one consistent workflow across field devices and gateways using the same FIM tool.

OPC UA Server Pub/Sub support to enable instrumentation condition monitoring solutions with Edgenius and Genix APM Predict. OPC UA Pub/Sub is the default OPC UA interface to Edgenius edge. Additionally new OPC UA Server setting is introduced to enable flexibility of FIM OPC UA Server security settings in combination with used OPC UA Clients.

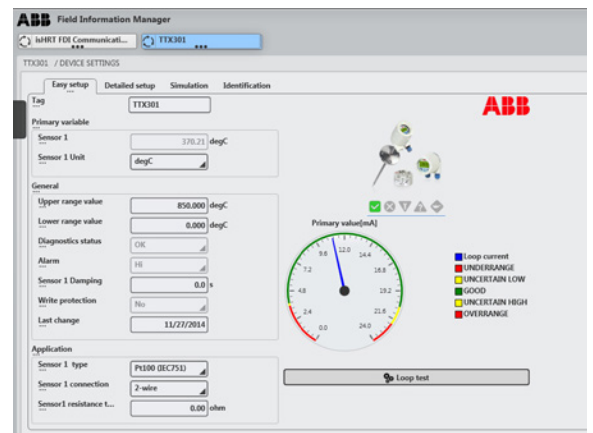
Backup scheduler, enables automatic backup based on a configurable time interval (every X days/weeks/months/year) and a time of the day (e.g., only at night).

01 Easy navigation: just switch between various views of the devices

02 FIM software



01



02

To find your local ABB contact visit:
abb.com/contacts

For more product information visit:
abb.com/fieldinfo

800xA is a registered trademark of ABB. All rights to other trademarks reside with their respective owners. We reserve the right to make technical changes to the products or modify the contents of this document without prior notice. With regard to purchase orders, The agreed particulars shall prevail. ABB does not assume any responsibility for any errors or incomplete information in this document.

We reserve all rights to this document and the items and images it contains. The reproduction, disclosure to third parties or the use of the content of this document – including parts thereof – are prohibited without ABB's prior written permission.

Copyright© 2023 ABB
All rights reserved

3BSE091144 en E