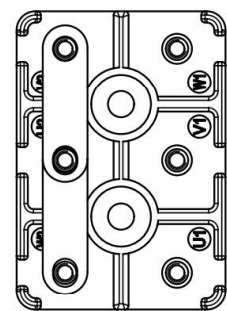
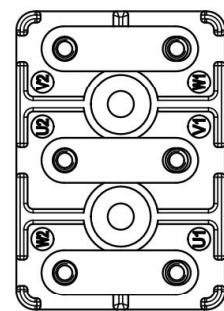


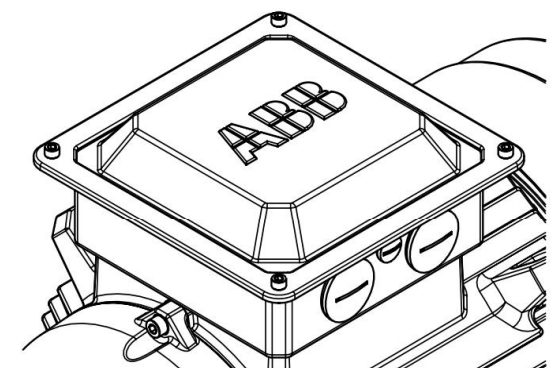
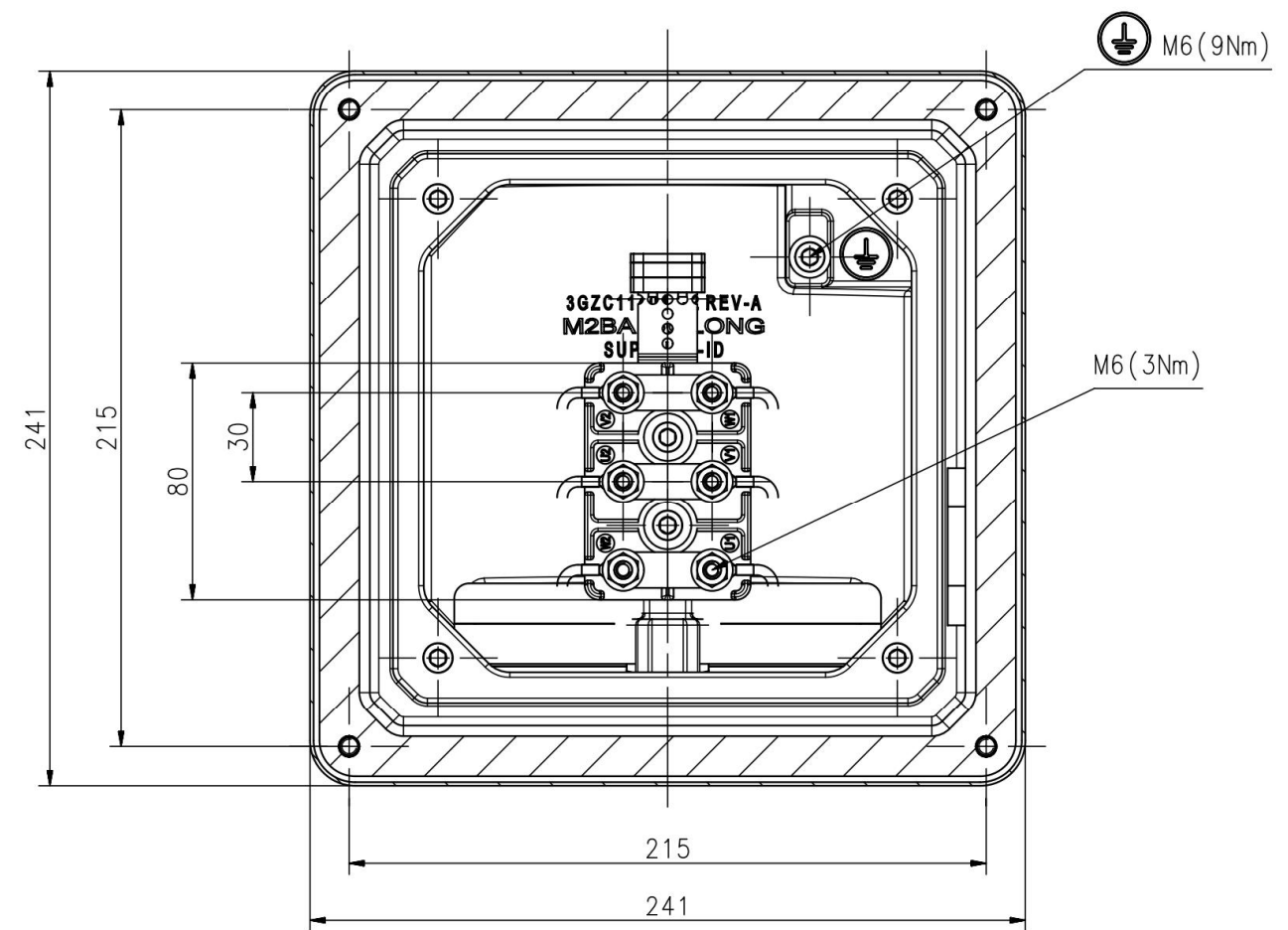
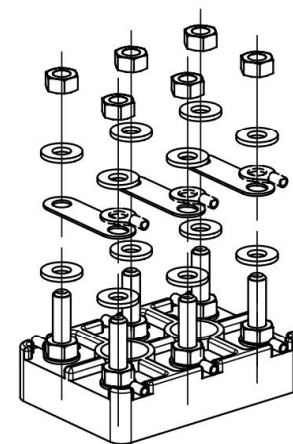
Y-connection



D-connection



Terminal Board



|                  |  |                            |              |                              |   |
|------------------|--|----------------------------|--------------|------------------------------|---|
| Comment:<br>1/1  |  | <b>Dimension Print</b>     |              | Motor Type:<br>M2BAX 160-200 | Document No:<br>3GZC500016-13 A<br>14 BA 160 ZW                                       |
|                  |  | Description:               | Terminal box |                              |  |
| Unit: Motors     |  | Issued by: Juicy Hou       |              | Replaces:                    |   |
| Date: 06.17.2014 |  | Approved by: Michael Zhang |              | Replaced by:                 |   |
| ABB Ltd.         |  | Customer Reference:        |              |                              |  |