

A

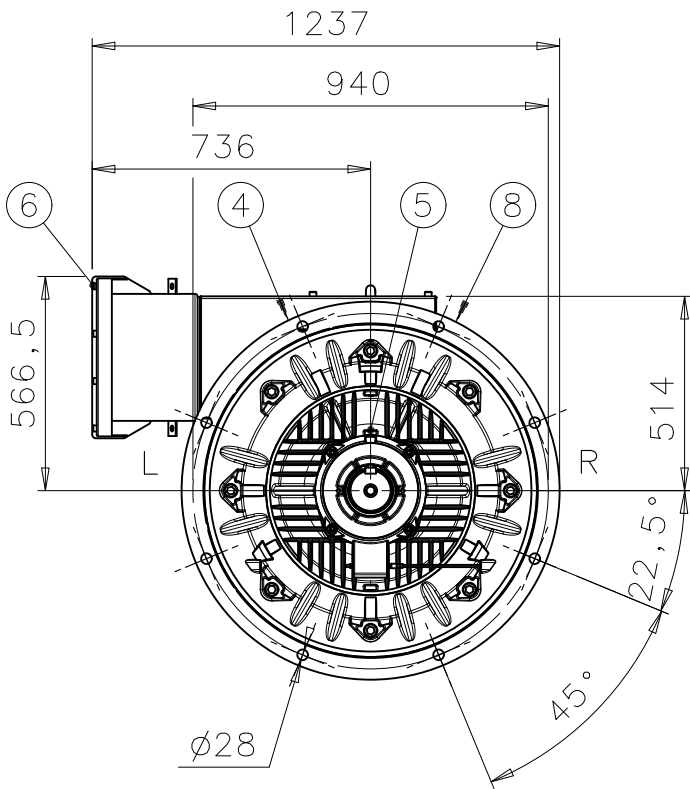
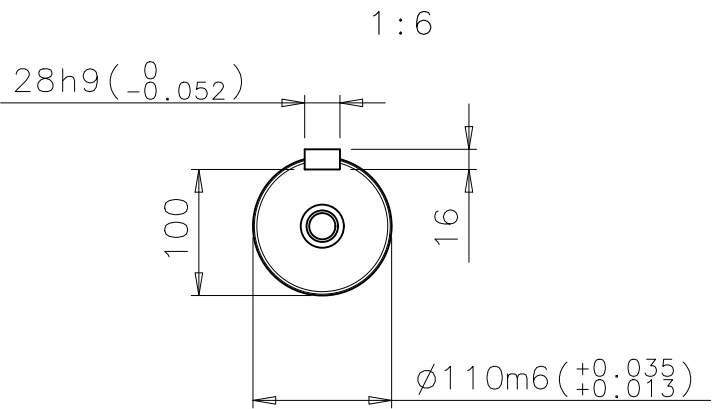
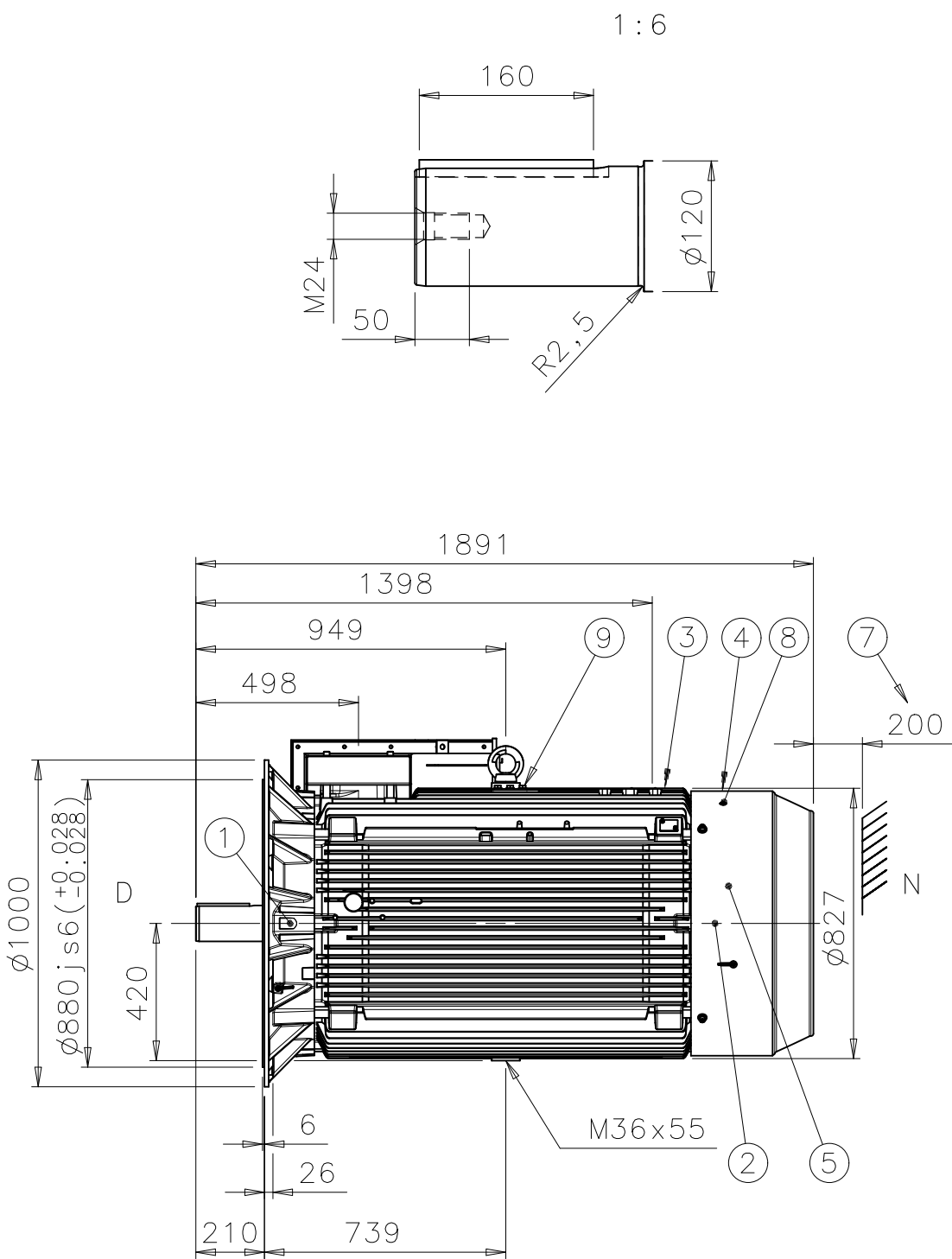
B

C

D

We reserve all rights in this document and in the information contained therein. Reproduction, use or disclosure to third parties without express authority is strictly forbidden.
© ABB Oy, Machines, Helsinki

General tolerances ISO 2768-mK
Threads according to ISO 965 tolerance class 6H
Symbols for roughness acc. to ISO 1302



1	D-BEARING	6324/C3
2	N-BEARING	6319/C3
3	TERMINAL BOX FOR CONTROL CABLE $\varnothing 10-14$, 2xM20x1,5	
4	SPM NIPPLE DE AND NDE	
5	PT-1000 FOR BEARINGS (OPTIONAL)	
6	MAIN TERMINAL BOX	
7	FREE DISTANCE FOR COOLING	
8	GREASING NIPPLE DE AND NDE	
9	EARTHING, M12, FOR M3GM MAX 150mm ²	



A

B

C

D

THE CUSTOMER IS RESPONSIBLE FOR THE DESIGN AND CONSTRUCTION OF THE FOUNDATION. IT SHALL BE SUFFICIENTLY RIGID TO WITHSTAND SHORT CIRCUIT FORCES. TO AVOID RESONANCE VIBRATIONS THE FOUNDATION SHALL BE DESIGNED SO THAT THE NATURAL FREQUENCY OF FOUNDATION TOGETHER WITH MACHINE IS NOT WITHIN $\pm 20\%$ OF RUNNING SPEED FREQUENCY. THE CUSTOMER IS ALSO RESPONSIBLE FOR LATERAL AND TORSIONAL CRITICAL SPEED ANALYSIS OF THE COMPLETE INSTALLATION.

B	DIMENSIONING REVISED, M3BM->M3BM/GM				2006-10-23	AK	OL
Rev	Change				Date	Prep.	Approved
Prepared 2005-03-31 M.KOSKINEN		Responsible dept. ATAP/PID		Title DIMENSION PRINT SQUIRREL CAGE MOTOR			Scale 1:15
Approved 2005-09-02 J.KARJALAINEN		Take over dept.					
Material				Code 13 BM 400 A / 400			Language en
Supersedes		Superseded by		Type M3BM/GM 400L4-12 B5			Size A3
 ABB Oy, Machines, Helsinki				Document No. 3GZF500040-139			Revision B
							Sheet 1/1