

General accessories

2



TFU 25

Single-phase power outlet for temporary connections, e.g. for a hand lamp or power drill.

- Mounts directly on the busbar.
- Conductor cross section, max. 35 mm² Al/Cu.
- Diazed säkring max 25 A.

Connectors for the PE and N conductors are also needed (see the page about connectors).



KSKP 25/50

Terminal block.



AK-ADAS

Prefabricated connector for the extension of Al cable, while connecting in a cable distribution cabinet, a service distribution board or in switch-gears. Dimensioned in accordance with the cable loading and short-circuit data.

- Meets the requirements of: IEC 61238-1
- Flexible insulated Cu conductor compressed onto a prefabricated Al/Cu cable connection. The aluminium part is designed for crimping with the Elpress system. The length of all the connectors are 700 mm.



PSFS 5/17

Plate for sealing phase bar.



PBKP 25/50

Seal cover for KSKP 25/50.



UKRA 90

Universal clamp for fixing cables with Ø 20-90 mm, on mounting rails in a cabinet, for example.

Designation	ID No.	Number of modules	Rated data	Cable connection	Dimensions			Weight
					Height	Width	Depth	
		M *		Al/Cu mm ²	mm	mm	mm	kg/pcs
TFU 25	2CGX0 63140001	–	230 V, 25 A	1.5 -35	84	30	185	0.3
KSKP 25	2CGX0 63130005	–	500 V, 63 A	1.5-25	–	56	–	0.2
KSKP 50	2CGX0 63130007	–	400 V, 160 A	6-50	–	73	–	0.3
PSFS 5	2CGX0 53050143	5	–	–	–	–	–	0.1
PSFS 17	2CGX0 53050144	17	–	–	–	–	–	0.1
PBKP 25	2CGX0 53050141	–	–	–	–	80	–	0.1
PBKP 50	2CGX0 53050142	–	–	–	–	96	–	0.1

* 1 module M = 12.5 mm.

Designation	ID No.	Fits aluminium conductor cross section	Conductor cross section of connector	Weight
		mm ²	mm ²	kg/pcs
AK-ADAS 5025-7	2CGX0 63030075	50	25	0.2
AK-ADAS 7035-7	2CGX0 63030082	70	35	0.2
AK-ADAS 9550-7	2CGX0 63030090	95	50	0.5
AK-ADAS 12070-7	2CGX0 63030097	120	70	0.5
AK-ADAS 15070-7	2CGX0 63030104	150	70	0.6
AK-ADAS 185120-7	2CGX0 63030115	185	120	0.9
AK-ADAS 240120-7	2CGX0 63030118	240	120	1.0

Designation	ID No.	Diameter	Qty per pack	Weight
		mm		kg/pcs
UKRA 90	2GLX0 65300013	20-90	1	0.2

Street lighting boxes

GBL 63

2



GBL 63

Street lighting box for five-wire system (TN-S).

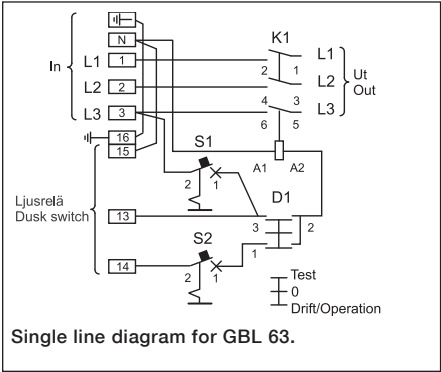
- Can be mounted on mounting plate in the upper section of enclosures CDCM and SDCM.
- Contactor for 63 A.
- Degree of protection IP3X.
- 7 M (125) free space for kWh metering, control etc.

Connectable cable cross-section:

- Incoming/outgoing cable to terminal block, max. 16 mm².
- Incoming/outgoing wiring for control circuits, max. 4 mm².

Maximum lighting loads switched by contactor (Data coming from the contactor manufacturer)

Lamp type	Lamp Wattage	Lamp rated current 230 V	Max Quantity
			lamps/phase
	W	A	GBL 63
High-pressure sodium Metall-halogen lamps Uncompensated	150	1,8	23
	250	3,0	14
	400	4,4	9
	600	6,2	7
	1000	10,3	4
High-pressure sodium Metall-halogen lamps Compensated	150	1,0	50
	250	1,5	33
	400	2,5	20
	600	3,3	15
	1000	6,2	8
Mercury, high pressure Uncompensated	125	1,2	37
	250	2,2	20
	400	3,3	13
Mercury, high pressure Compensated	125	0,7	64
	250	1,3	33
	400	2,1	21



Designation	ID No.	Rated data	Cable connection	Dimensions			Weight
				Height	Width	Depth	
			mm ²		mm		kg/pcs
GBL 63	2CGX0 63190374	400 V, 63 A	4Cu/16 Al/Cu	382	250	132	4.8

Surge arresters

SCA, SVA

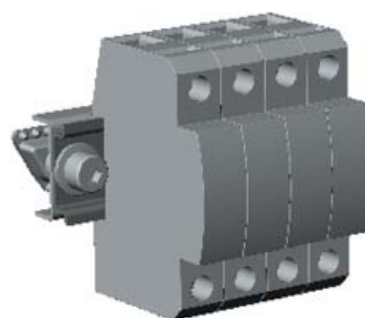


SCA

Surge current arrester kit. Heavy-duty protection needed when an overhead line or lightning-conductor is used.

The kit comprises:

- Three heavy duty arresters for TN-C (four-wire) system with bracket for mounting on the PEN bar.
- The necessary flexible wires.
- Connectors (AD 95 for phase connection, AD 70 for PEN connection).
- Installation instructions.



SVA

Surge voltage arrester kit.

A medium-duty arrester for use with underground networks and where no lightning-conductors are used.

The kit comprises:

- Four medium-duty arresters for TN-S systems with attachment for mounting on the N bar.
- The necessary flexible wires.
- Connectors (AD 95 for phase connection, AD 70 for PE and N connection).
- Installation instructions.

Can also be used in a TN-C system.

Choice of surge protection:

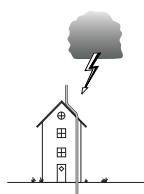
Choose SCA (heavy-duty protection)

- When the building has a lightning conductor.
- Electricity supply via overhead line.
- In rural areas with a high frequency of lightning strikes.
- Class: I/B.

Choice of surge protection:

Choose SVA (medium-duty protection)

- With electricity supply via buried cable (at least 200 metres of cable to the overhead line network).
- Class: II/C.



SCA
Lightning conductor.



SCA
Overhead line.



SVA
Buried cable > 200 m.

Designation	ID No.	Rated data	Cable connection	Dimensions			Weight
				Height	Width	Depth	
				mm ²	mm		
SCA	2CGX0 53190270	230 V (L-N)	25	150	130	90	2.9
SVA	2CGX0 53310671	230 V (L-N)	25	90	90	90	1.9