

# Voltage Transformer Fuses, CEF-VT

Rated voltage: 6 -24 kV  
Rated current: 2-6,3 A

The CEF-VT fuses are applicable as voltage transformer fuses and as typical protection requesting current limiting back-up fuses. They can be located both inside voltage transformer fuse holder and on typical fuse base.

Additionally, thanks to last modification of striker pin functionality that release can be now temperature dependent – Temperature Control Unit (TCU) – increase application safety for gas insulated panels.

## Main features:

- special design for protection against faults in voltage transformer units,
- low minimum breaking current,
- low power losses, specially suitable in enclosed compartments,
- high breaking capacity,
- high current limitation,
- type tested acc. to IEC 60282-1,
- all CEF-VT fuses are equipped with Temperature Control Unit, which protects against high temperature in enclosed compartments,
- can be equipped with medium type striker, which is activated immediately when the fuse-elements melt,
- dimensions acc. to IEC 60282-1 and DIN 43625.
- unified voltage ratings for more application flexibility,
- single fuse version for both indoor and outdoor operating conditions,
- graved fuse data for long term fuse recognition,
- welded current path secures stable electrical contacts with active breaking elements.

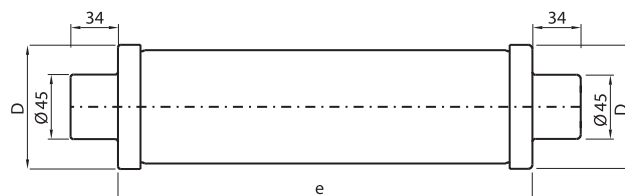


#### 4. Ordering table, technical data and dimensions of CEF-VT

New smartcode CEF-VT	$I_n$ [A]	$I_1$ [kA]	$I_3$ [A]	$P_n$ [W]	Striker pin force [N]	$R_0$ [mΩ]	D [mm]	Weight [kg]	Catalogue number CEF-VT	Catalogue number CEF-VT-TCU
Rated voltage: 6/12 kV Length „e”: 192 mm										
1YMB751209M1501	2	63	27	7.4	-	3142.0	53	1.5	1YMB531048M0001	
1YMB751209M1511	2	63	27	7.4	80N	1340.0	53	1.5	1YMB531048M0002	1YMB531898M0002
1YMB751214M1511	6.3	63	41	18	80N	325.0	53	1.3	1YMB531048M0003	1YMB531898M0003
Rated voltage: 6/12 kV Length „e”: 292 mm										
1YMB751209M2501	2	63	27	7.4	-	1500.0	53	1.6	1YMB531049M0001	
1YMB751209M2511	2	63	27	7.4	80N	1340.0	53	1.6	1YMB531049M0002	1YMB531899M0002
1YMB751214M2511	6.3	63	41	18	80N	325.0	53	1.9	1YMB531049M0003	1YMB531899M0003
Rated voltage: 10/17.5 kV Length „e”: 192 mm										
1YMB751714M1501	6.3	63	43	23	-	428.0	53	1.5	1YMB531045M0003	
1YMB751714M1511	6.3	63	43	23	80N	428.0	53	1.5	1YMB531045M0004	
Rated voltage: 15/24 kV Length „e”: 292 mm										
1YMB752409M2501	2	31.5	32	17	-	3142.0	53	1.6	1YMB531050M0001	
1YMB752414M2511	6.3	31.5	46	18	80N	600.0	53	1.9	1YMB531050M0003	1YMB531900M0003
Rated voltage: 15/24 kV Length „e”: 442 mm										
1YMB752409M4501	2	31.5	32	17	-	3142.0	53	2.4	1YMB531046M0001	
1YMB752414M4511	6.3	31.5	46	35	80N	600.0	53	2.5	1YMB531046M0003	1YMB531896M0003

#### Legend:

$I_n$	rated current
$I_1$	rated maximum breaking current
$I_3$	rated minimum breaking current
$P_n$	rated power
$R_0$	resistance
D	diameter

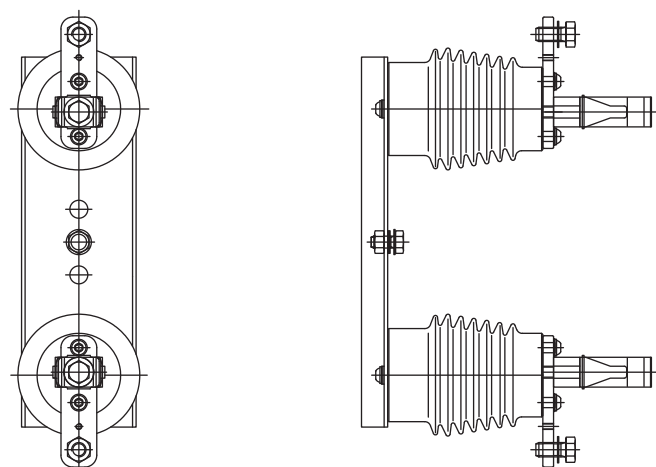


## Accessories

### Fuse-base type UCE

– recommended fuse-base for CEF-VT fuses

Type	Rated voltage [kV]	Max. tested fuse-link current [A]	Fuse length e [mm]
UCE 12	12	200	292
UCE 17,5	17,5	63	292
UCE 24	24	125	442



For more information please contact:

### ABB Contact Center

tel.: +48 22 22 37 777

e-mail: kontakt@pl.abb.com

### ABB Sp. z o.o.

Headquarter

1 Zeganska St.

04-713 Warszawa

Phone: +48 22 22 37 000

### ABB Sp. z o.o.

Branch in Przasnysz

59 Leszno Str.

06-300 Przasnysz, Poland

Phone: +48 22 22 38 900

e-mail: marketingmv.plabb@pl.abb.com

[www.abb.pl](http://www.abb.pl)

#### Note:

We reserve the right to make technical changes or modify the contents of this document without prior notice. With regard to purchase orders, the agreed particulars shall prevail. ABB does not accept any responsibility whatsoever for potential errors or possible lack of information in this document. We reserve all rights in this document and in the subject matter and illustrations contained therein. Any reproduction, disclosure to third parties or utilization of its contents – in whole or in parts – is forbidden without prior written consent of ABB.

Copyright 2015 ABB

All rights reserved

Power and productivity  
for a better world™

