

Current Limiting Fuses, CEF

Rated voltage: 3/7.2-36 kV
Rated current: 6-200 A

The CEF current limiting fuses design is based on overload spots that significantly reduce fuse structure temperature during interruption process. Additionally, thanks to last modification of striker pin functionality that release can be now temperature dependent – Temperature Control Unit (TCU) – increase application safety for gas insulated panels.

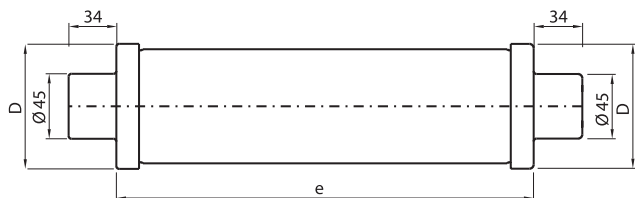
Main features:

- low minimum breaking current,
- low power losses, specially suitable in compact switchgear and ring main units,
- high breaking capacity,
- high current limitation,
- type tested acc. to IEC 60282-1,
- dimensions acc. to IEC 60282-1 and DIN 43625,
- the CEF is equipped with Temperature Control Unit, which protects against high temperature in enclosed compartments,
- equipped with medium type striker, which is activated immediately when the fuse-elements melt,
- unified voltage ratings for more application flexibility,
- single fuse version for both indoor and outdoor operating conditions,
- graved fuse data for long term fuse recognition,
- welded current path secures stable electrical contacts with active breaking elements.



Available fuses ratings and dimensions, rated currents are listed in single cells

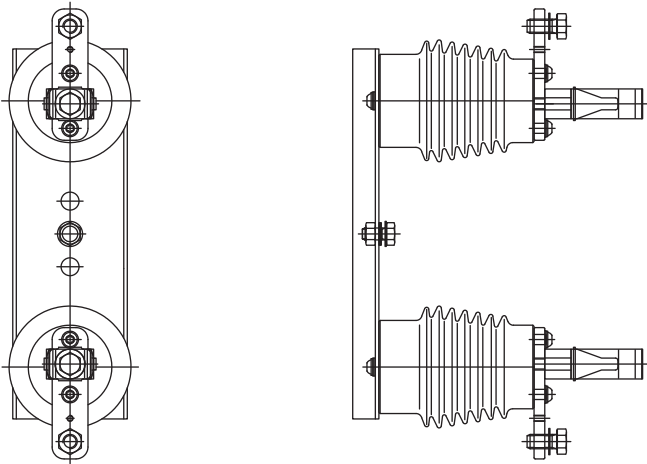
Rated voltage [kV]	Dimensions e[mm]/D[mm] & Rated current I _n [A]											
	e=192		e=292		e=367		e=442		e=537			
	D=65	D=87	D=53	D=65	D=87	D=65	D=87	D=53	D=65	D=87	D=65	D=87
3/7,2	6;10; 16;25; 40;50;63	80; 100		6;10; 16;25; 40;50;63	80;100;125; 160;200		125;160; 200					
6/12			6;10; 16;20	6;10;16; 25;31,5; 40;50; 63;80; 100	80;100;125			6;10; 16;20	6;10;16;25; 31,5;40;50; 63;80;100; 125	80;100;125; 160;200	125	125; 160; 200
10/17.5				6;10;16; 20;25; 31,5; 40;50	40;50;63	6;10;16; 20;25;31,5; 40;50	40;50; 63;100		6;10;16;20; 25;31,5;40; 50	40;50;63;80; 100		80; 100; 125
10/24								6;10; 16;20	6;10;16;20; 25;31,5;40; 50;63	50;63;80	80	80; 100; 125
27									6;10;16	25;40;50;63		80
20/36											6;10;16	25;40



Accessories

Fuse-base type UCE – recommended fuse-base for CEF fuses

Type	Rated voltage [kV]	Max. tested fuse-link current [A]	Fuse length e [mm]
UCE 7,2	7,2	100	192
UCE 12	12	200	292
UCE 12L	12	200	442
UCE 17,5	17,5	63	292
UCE 24	24	125	442
UCE 24L	24	125	537
UCE 36	36	40	537



For more information please contact:

ABB Contact Center

tel.: +48 22 22 37 777

e-mail: kontakt@pl.abb.com

ABB Sp. z o.o.

Headquarter

1 Zeganska St.

04-713 Warszawa

Phone: +48 22 22 37 000

ABB Sp. z o.o.

Branch in Przasnysz

59 Leszno Str.

06-300 Przasnysz, Poland

Phone: +48 22 22 38 900

e-mail: marketingmv.plabb@pl.abb.com

www.abb.pl

Note:

We reserve the right to make technical changes or modify the contents of this document without prior notice. With regard to purchase orders, the agreed particulars shall prevail. ABB does not accept any responsibility whatsoever for potential errors or possible lack of information in this document. We reserve all rights in this document and in the subject matter and illustrations contained therein. Any reproduction, disclosure to third parties or utilization of its contents – in whole or in parts – is forbidden without prior written consent of ABB.

Copyright 2015 ABB

All rights reserved