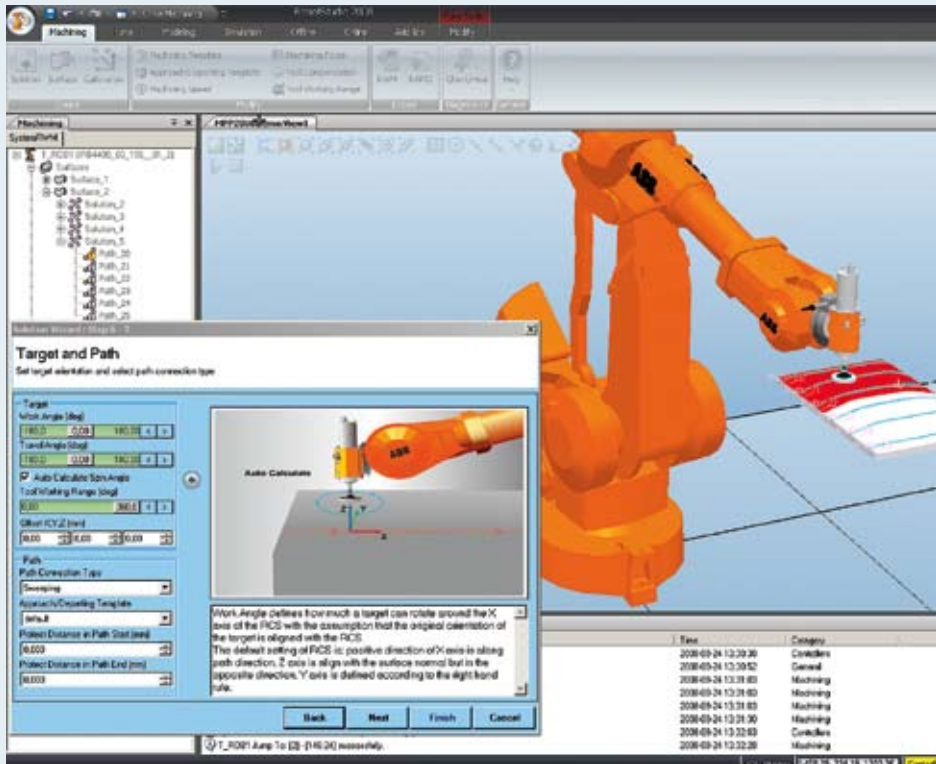


Easy automated machining



>FACTS

Important features of RobotStudio Machining PowerPac

- Path programming wizard
 - Create/select surface or edge to be machined
 - Set machining process parameters
 - Pre-defined path generation patterns
 - Set path and target parameters
- Path and target optimization and modification
- Path simulation
- Program export as RAPID or RW Machining FC
- Calibration
- Pre-defined and configurable machining templates
- Check/heal CAD models

RobotStudio uses an exact copy of the software used to run the robots in production.

With the RobotStudio Machining PowerPac, robots can be programmed offline for complex machining operations with less risk – and in less time.

> Machining of parts has long been done manually by the foundry industry – the irregular surfaces and flexibility required were considered best done by hand. But robots are ideal for machining applications, with their ability to work efficiently and provide an unparalleled consistency. To ensure easy robot programming, which is key to optimizing the potential of automated machining, ABB has developed the RobotStudio Machining PowerPac.

RobotStudio uses an exact copy of the real software that runs robots in production, so realistic simulations can be performed, using real robot programs and

configuration files identical to those used on the shopfloor. Time and risks are reduced by programming robots offline, in addition to more accurate paths being created.

Using the Fluent user interface from Microsoft Office 2007, the RobotStudio Machining PowerPac features an intuitive wizard to guide users in creating targets and paths from surfaces and edges quickly, easily and accurately. Pre-defined path generation patterns are provided to support all possible machining types. All process setting such as tool width, overlap rate, machining angles, etc., can be defined in different pages of

the wizard. All these settings will be used to generate the targets and paths. And wizard pages can be browsed forward and backward to adjust process settings. In the last wizard page, a preview is provided to show how the paths look like before they can be finally created.

The PowerPac includes three machining templates as default: NormalProcess, FC (Force Control) PressureProcess and FC SpeedChangeProcess. All of the parameters in the templates can be customized and re-used among different cases.

Because the Machining PowerPac supports force controlled processes, it works seamlessly with ABB's software for force controlled machining, RobotWare Machining FC, and the program generated in Machining PowerPac can be imported into and recognized by RobotWare Machining FC. 