

## FPRC

# FlexPendant Retractable Cable special version

The FPRC from ABB is an automatic cable winding system for teach pendants. Spring driven, the system is a fast and easy way to maintain a clear and safe work area.

### This is why you should use FPRC

ABB's spring-loaded FlexPendant Retractable Cable system, the FPRC, is certified to ensure a safe work area. By keeping teach pendant cables off the production floor and out of the way of equipment cable damage is reduced. The FPRC has been tested to minimize noise frequency on cables and to reduce signal loss.

### How it works

Thanks to its spring-loaded retraction system, the FPRC automatically rewind the teach pendant cable inside the reel.

### Dimensions

- 5 mt: Mini size
- 15 mt: Medium size, the same of 10 mt FPRC
- 25 mt: Large size, the same of 20 mt FPRC
- 30/35 mt: Jumbo size

### Foundry

- 10 mt, 15 mt, 20 mt: Large size
- 25 mt: Jumbo size

### Customized versions

- Extensible cable length 5, 15, 25, 30, 35 mt
- Different length of fixed cable (2,5 mt standard)  
e.g. 10+8 mt / 15+10 mt / 25+5 mt



### New Foundry Version

Material & Construction:

**Construction:** Heat resistant glass braided sleeving consists of textile glass with a braided construction which has a high thermal resistance and a specially developed impregnation of a mix resin. The combinations of these two polymers allows the use of this sleeve in applications with high thermal and mechanical demands. High continuous temperature, halogen-free, moderate thermal insulation, soft-flexible, light weight. RoHS compliant.

**Temperature:** Operative Temp -55°C up to +240°C  
Short term temp +538 °C

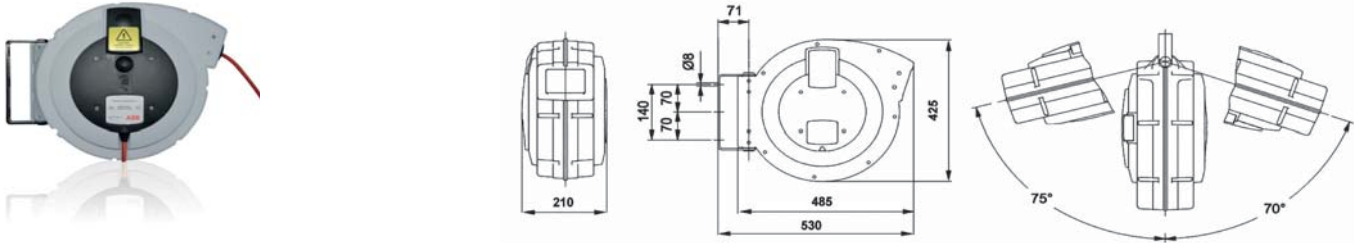
**Colour:** White.

**Special version for old S3 and S4 controller (on request)**

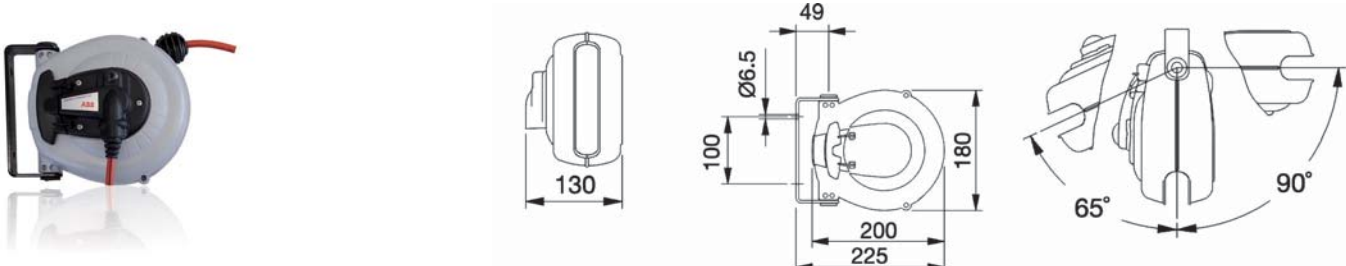
	S4C/S4C+	IRC5 Gtpu 1/2	IRC5 Gtpu3
5 mt	IT3HNE00188-1-5	IT3HAC11266-1-5	IT3HAC031683-1-5
15 mt	IT3HNE00188-1	IT3HAC11266-1	IT3HAC031683-1
25 mt	IT3HNE00188-1-25	IT3HAC11266-4	IT3HAC031683-004
30 mt	IT3HNE00188-1-30	IT3HAC11266-30	IT3HAC031683-30
35 mt	IT3HNE00188-1-35	IT3HAC11266-35	IT3HAC031683-35
10 mt Foundry	IT3HNE00188-1-10F	IT3HAC11266-1-10F	IT3HAC031683-1-10F
15 mt Foundry	IT3HNE00188-1F	IT3HAC11266-1F	IT3HAC031683-1F
20 mt Foundry	IT3HNE00188-20F	IT3HAC11266-20F	IT3HAC031683-20F
25 mt Foundry	IT3HNE00188-1-25F	IT3HAC11266-4F	IT3HAC031683-004F

Dimensions

Size:	H x L x P
Jumbo	530 x 425 x 210



Size:	H x L x P
Mini	225 x 130 x 130



1 FPRC Foundry | 2 Slow retraction

Note  
 We reserve the right to make technical changes or modify the contents of this document without prior notice. With regard to purchase orders, the agreed particulars shall prevail. ABB does not accept any responsibility whatsoever for potential errors or possible lack of information in this document.

Important Note  
 All this versions must NOT be used with extension cables or external operator's panel"