

Installation Instructions

ABB CONNECT UAT

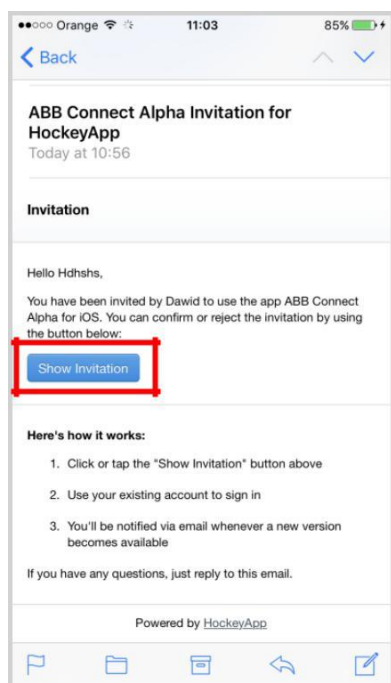
Installation on Android Device	1
Installation on Windows 10	3

Installation on Android Device

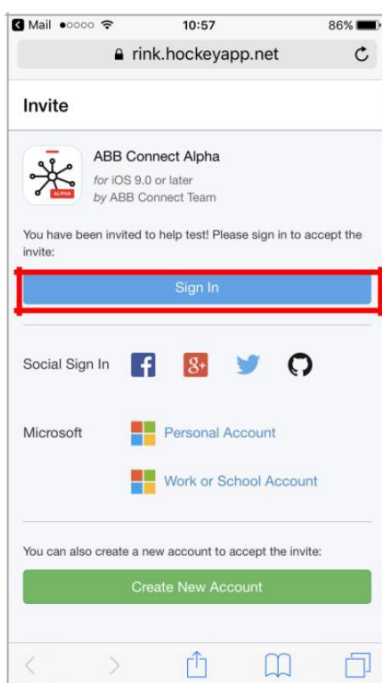
1. Open invitation sent via email. Please follow instructions below.

[If HockeyApp was already configured on your device please go to this link on your device's web browser:
<https://rink.hockeyapp.net/manage/apps/391273>

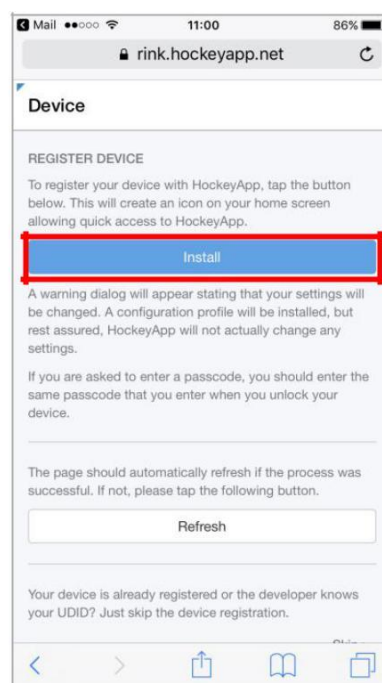
Step 1.



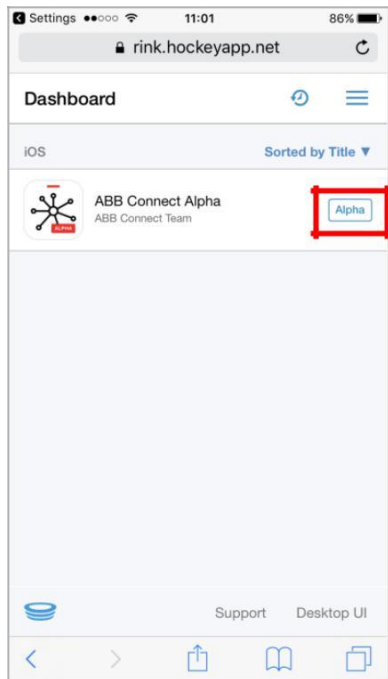
Step 2.



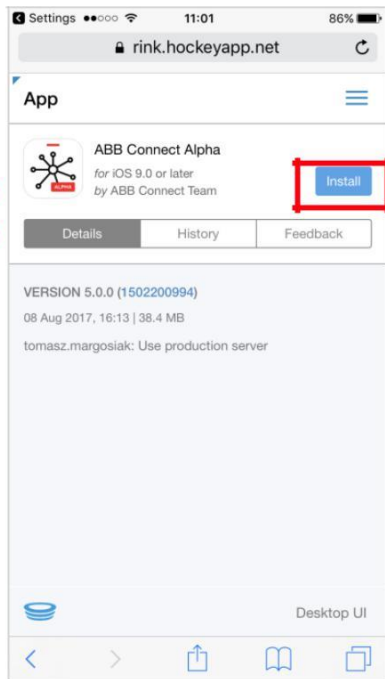
Step 3.



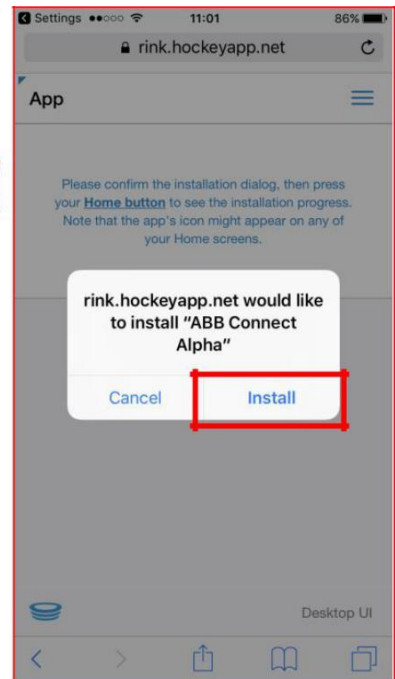
Step 4.



Step 5.



Step 6.

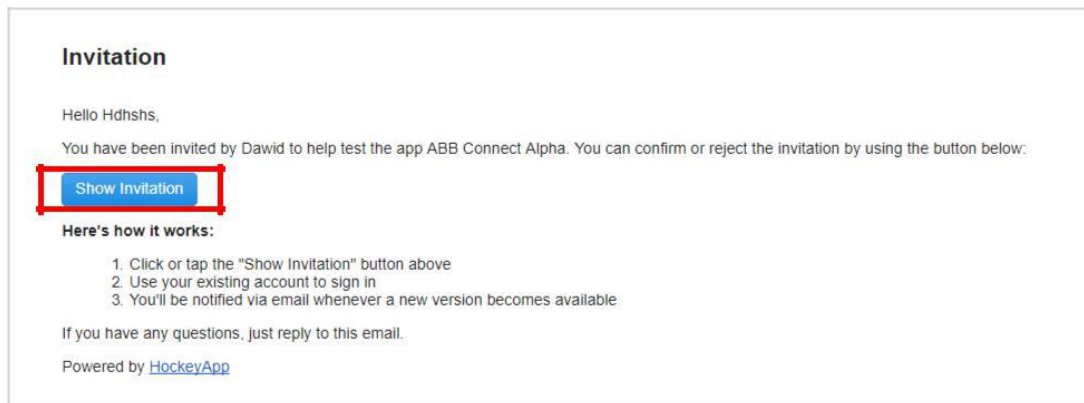


Installation on Windows Device

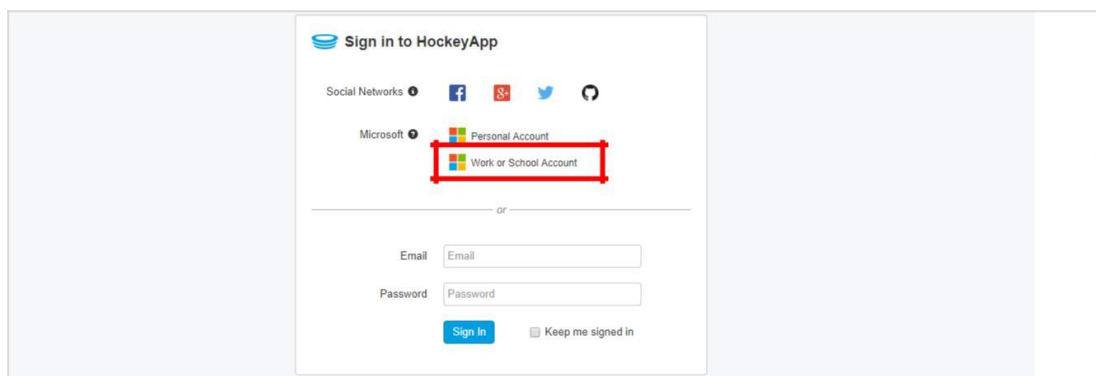
1. Open invitation sent via email. Please follow instructions below.

[If HockeyApp was already configured on your device please go to this link on your device's web browser:
<https://rink.hockeyapp.net/manage/apps/391933>

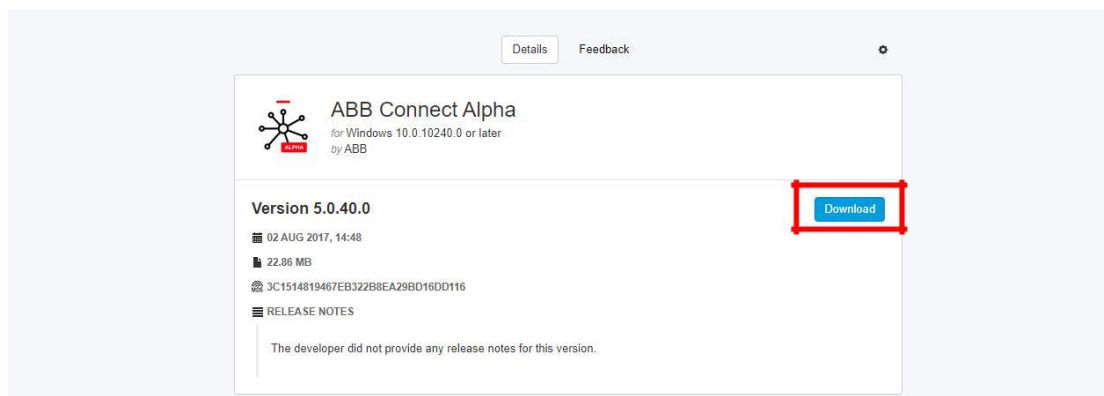
Step 1. Open invitation in email. Click show invitation button.



Step 2. Click on 'Sign in with Work or School Account'. Login with ABB Credentials.



Step 3. Click Download.



Step 4. Open the downloaded file and click install.

