



---

# ABB Ability™ Electrical Distribution Control System

Understanding Power



# Responding to a changing world



Electricity demand growing  
by 60% by 2040

>30 billion connected devices  
by 2020

500,000 PV panels commissioned  
each day in 2017 - x3 by 2020

35% of new cars electric by 2020

connected living market >\$730 billion in  
2020



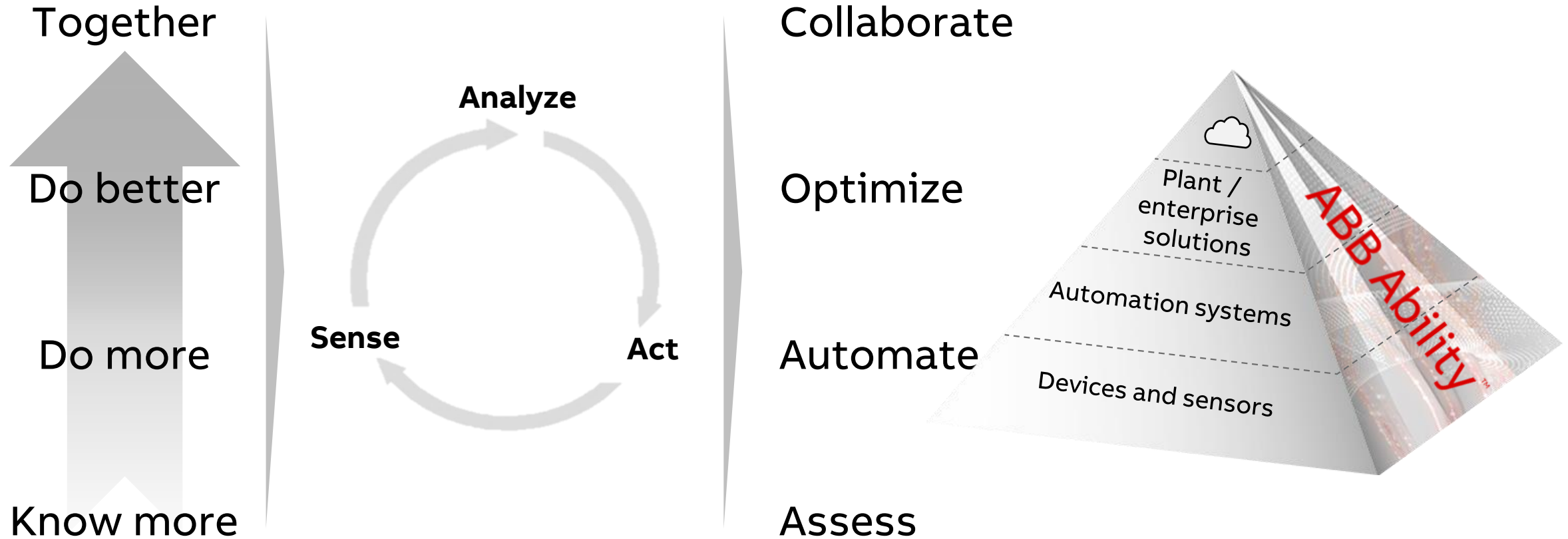
# A digital transformation

## Expanding horizons



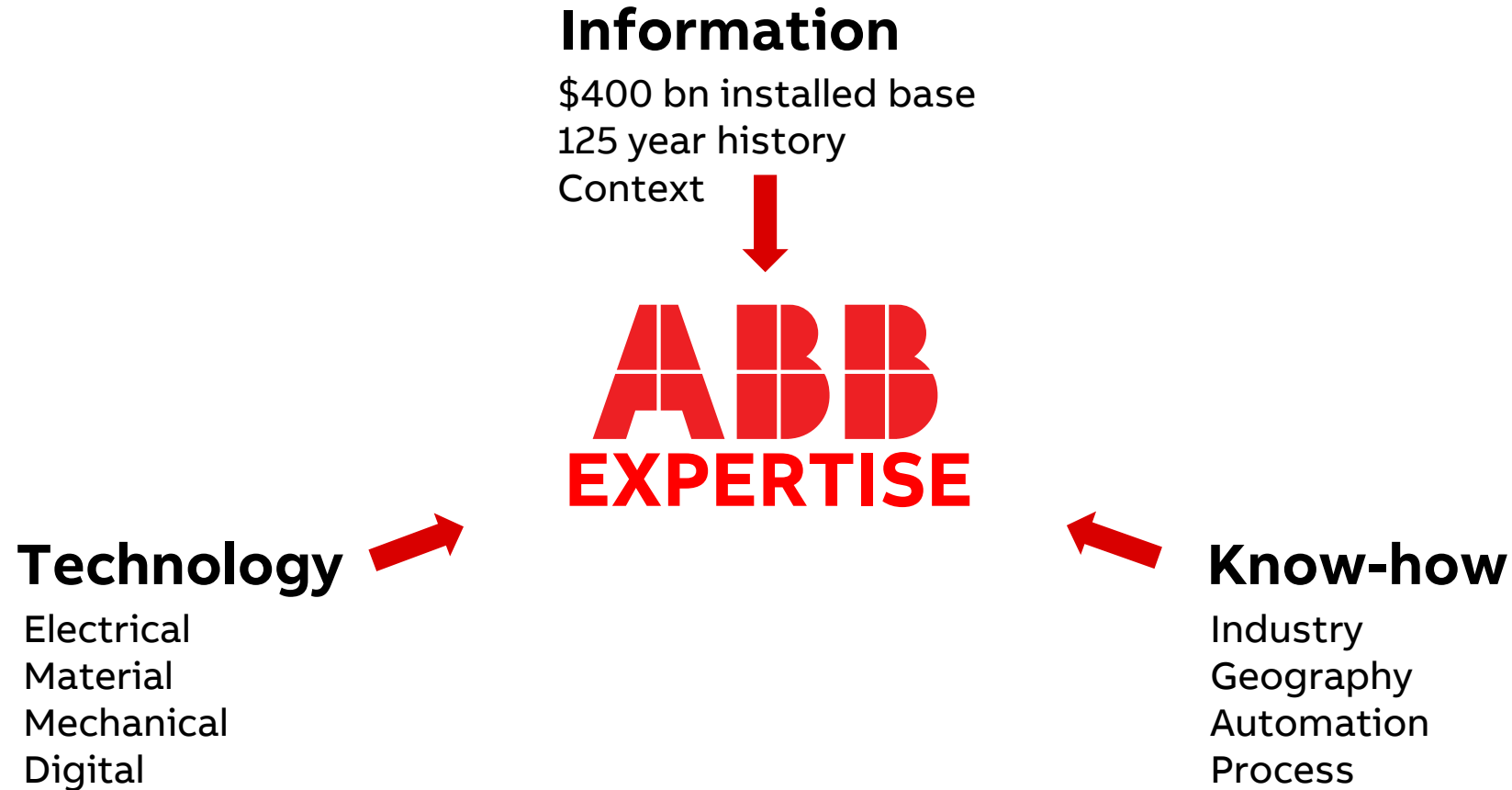
# How ABB Ability™ solutions deliver value

Digitally connected products and services providing expertise



# ABB in Digital

Uniquely qualified



# Data & Connectivity

## ABB Ability™ Electrical Distribution Control System

### Why?

Customers want to increase awareness on owned resources, improve performance and optimize their assets **to reduce total operating costs**

### What?

ABB Ability™ Electrical Distribution Control System is a **cloud-based energy management and asset supervision solution** for buildings and industrial sites.

### How?

It helps simplify facilities management, and **reduce energy and maintenance bills, enabling a 30% reduction on operating costs**

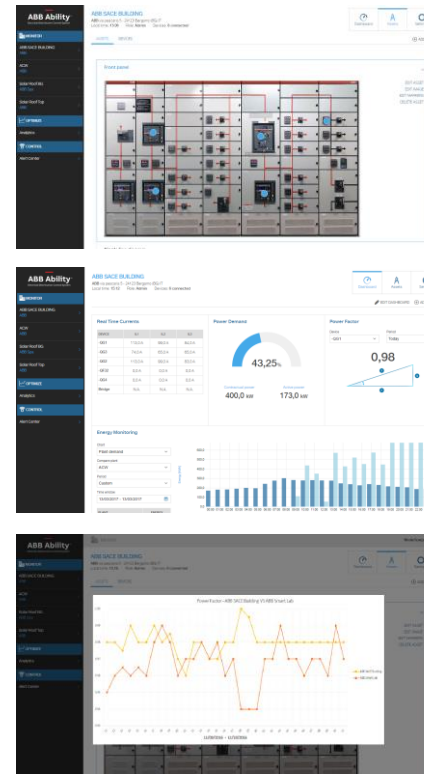


**The power of understanding at your fingertips**

# ABB Ability™ Electrical Distribution Control System

## Features and Benefits

### Cloud-based Energy and Asset Management



### Monitor

Discover plant performance, supervise the electrical system and allocate costs

### Optimize

Analyze the relevant information, improve the use of your assets and take the right business decision

### Control

Remotely implement an effective power management strategy to simply achieve energy savings

# ABB Ability™ Electrical Distribution Control System

## How it works

### Plug & Play Architecture

Leveraging the connectivity and sensing of ABB devices, we can model new outlines for innovation in the **low-voltage power distribution** business.

Emax 2 air circuit breaker, now becomes the smart hub by managing both **power and data flows**.

A **simple and integrated architecture** enabling truly plug & play approach.

**The evolution continues**





---

# ABB Ability™ Electrical Distribution Control System

## Case study

### Italian water utility

---

ABB Ability™ Electrical Distribution Control System helps the **Consorzio di Bonifica Veronese** to remotely monitor and optimize two pumping stations and a hydroelectric power plant.

- **24'000 €** grants (Energy Efficiency Certificates)
- **30%** savings on operating costs
  - Optimization of personnel's tasks and costs
  - Downtime prevention
  - Removal of power quality penalties

*Read the [press release](#)*

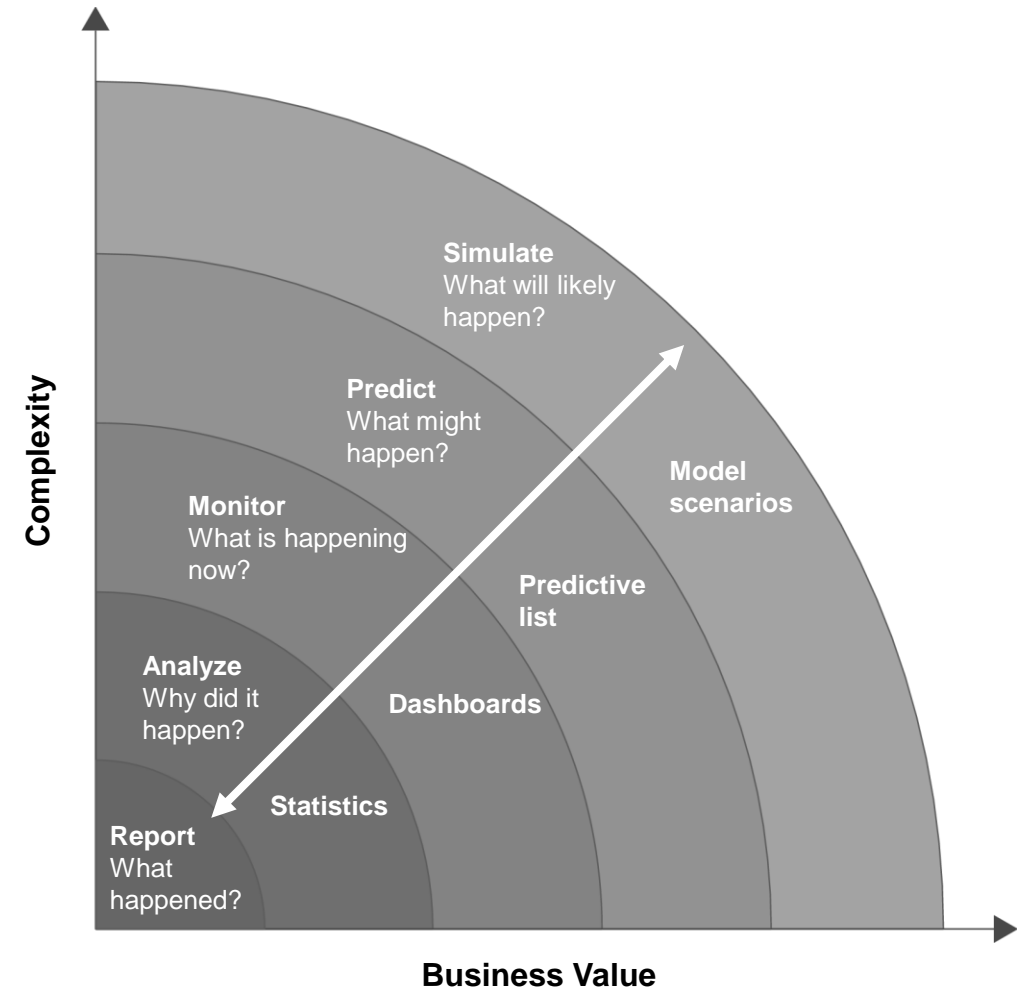
*Watch the [video](#)*



# ABB Ability™ Electrical Distribution Control System

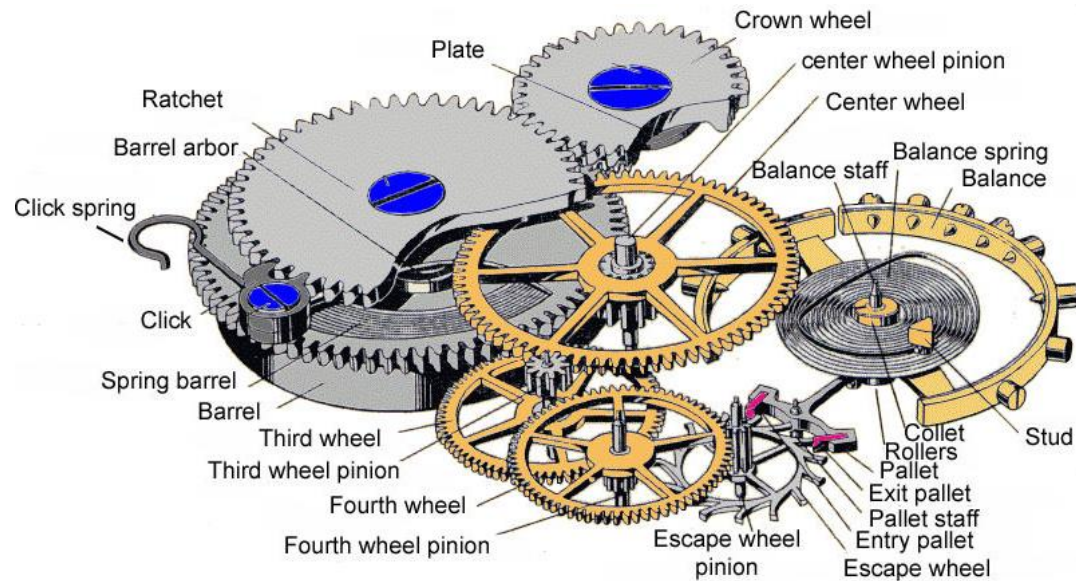
The journey has just started

- **Broaden** the application range and features
- Expanding our capabilities around **advanced analytics** and simulation
- Lead operational efficiency to **reduce footprint** and **costs**
- Achieving risk-based **predictive maintenance** maturity to drive better resource optimization, reliability, safety and compliance
- **Big data** leading to better products



# ABB Ability™ Electrical Distribution Control System

Manage complexity



# ABB Ability™ Electrical Distribution Control System

## How it works

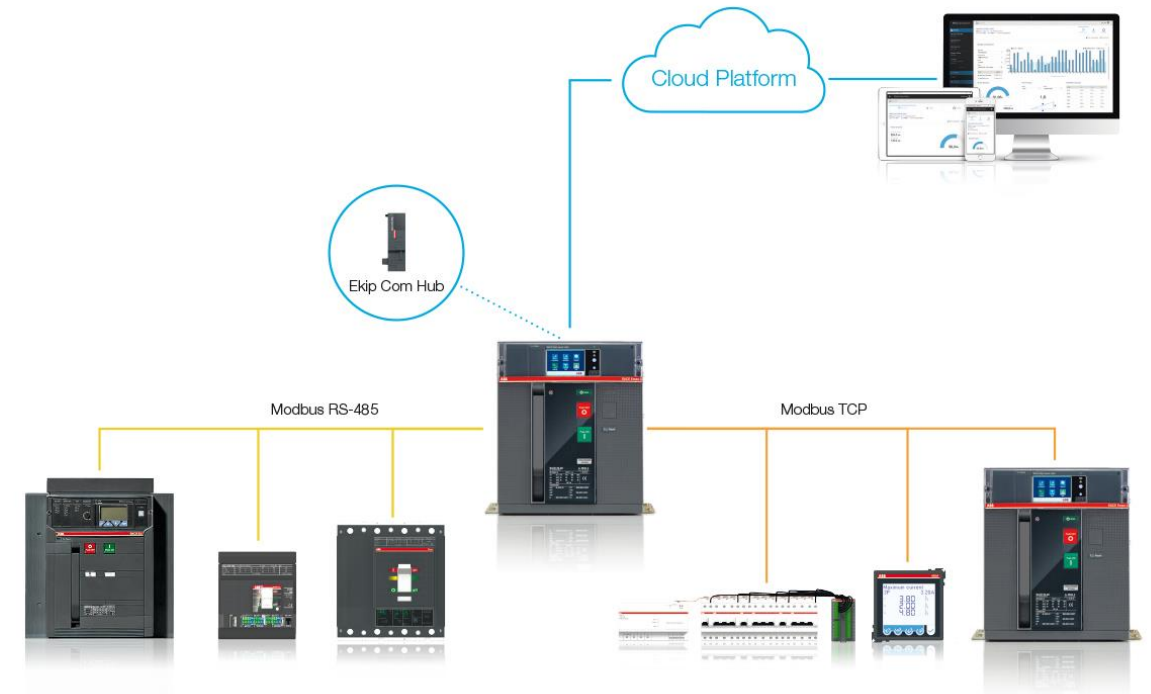
### Embedded solution

Plug-in the **Ekip Com Hub** module on Emax 2 or Ekip UP and start Ekip Connect wizard.

In **less than 10 minutes** the panel is connected to the cloud.

### Plug & play:

- ACBs
- MCCBs
- MCBs
- Energy and Power meters





# ABB Ability™ Electrical Distribution Control System

## How it works

### External solution

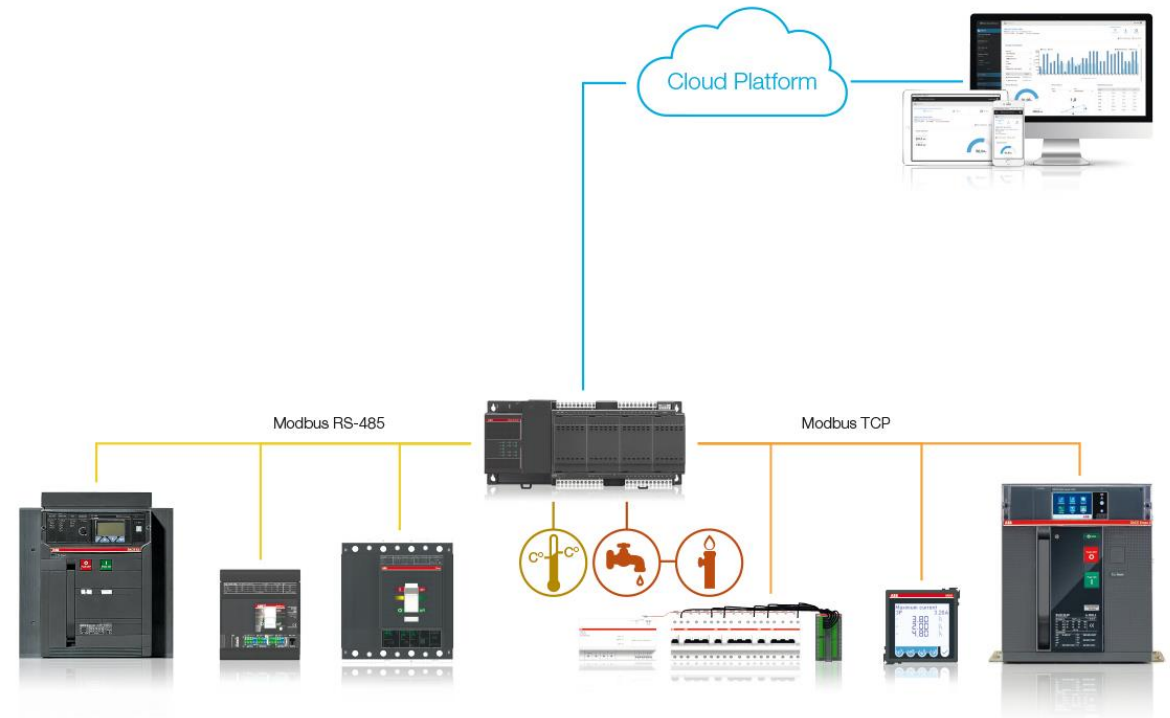
Connect devices to **Ekip E-Hub** DIN rail module.

**High flexibility** and **extended retrofitting**.

Easy and fast configuration via Ekip Connect wizard.

#### Plug & play:

- ACBs
- MCCBs
- MCBs
- Energy and Power meters
- Analog and Digital meters



# ABB Ability™ Electrical Distribution Control System

## How it works

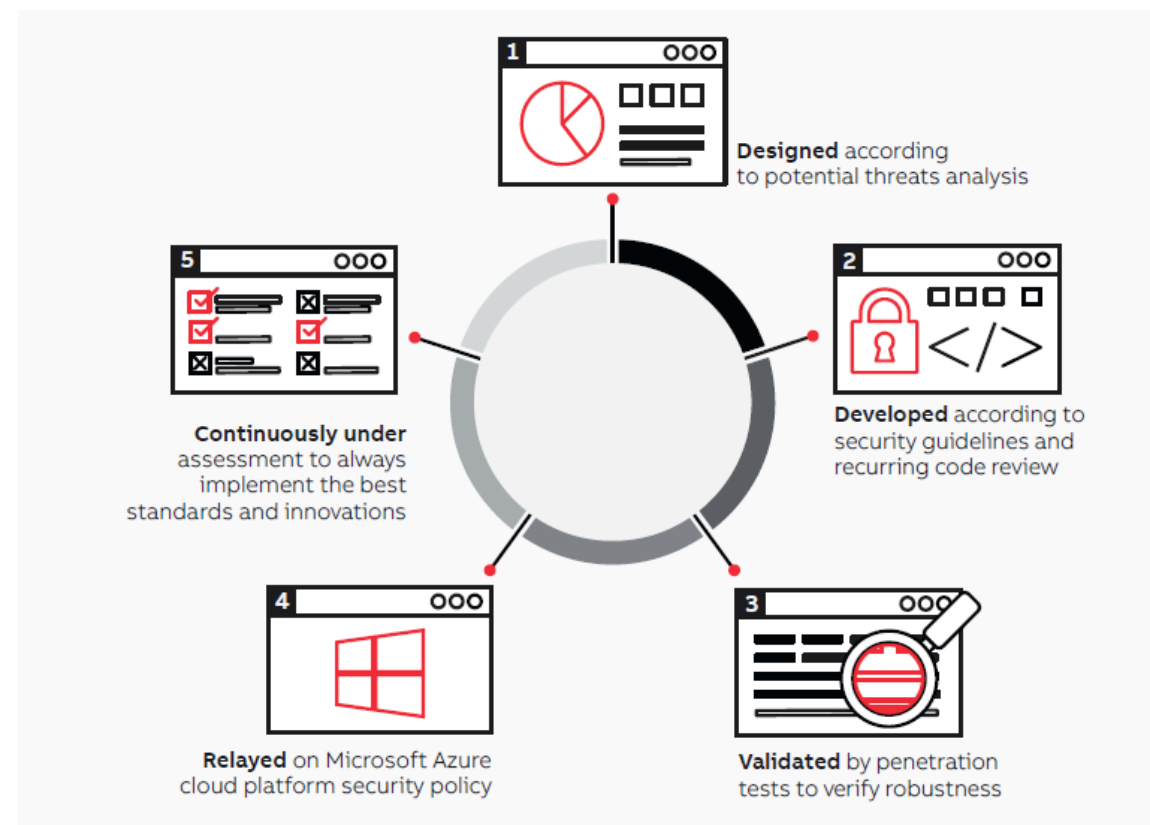
### Cloud & Cybersecurity

Why cloud-computing

- **Innovation** and **security** as a standard
- **Scalability** as a drive for business advantage

Cybersecurity

- **Design and development:**  
collaboration between ABB and Microsoft
- **Test, assessment and validation:**  
ABB corporate research center and global IS, and specialized partner on IT security



---

# ABB Ability™ Electrical Distribution Control System

Typical market

## Building

---



Commercial Building, e.g. hotels, shopping malls, retailers and chain stores

## Public facility

---



Public or institutional buildings related to the tertiary sector, e.g. medical facility, sport and convention center, school

## Industrial

---



Small-Mid size Industrial plant and Infrastructure

---

# ABB Ability™ Electrical Distribution Control System

## A simple shopping list

### Hardware

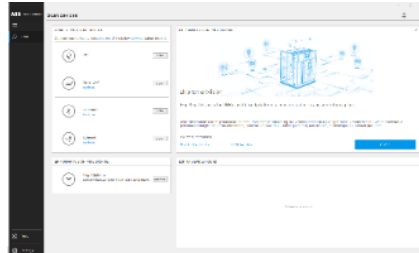
---



- Ekip Com Hub
  - Emax 2 or Ekip UP embedded communication module for cloud-connectivity
- Ekip E-Hub
  - DIN-rail mounted communication module for cloud-connectivity

### Commissioning tool

---



- Ekip Connect 3 Software available via free download

### Services

---



- ABB Ability™ EDCS
  - subscription to monitor, optimize and control your systems
  - Each subscription is valid for one site, up to 15 users' access





**ABB**