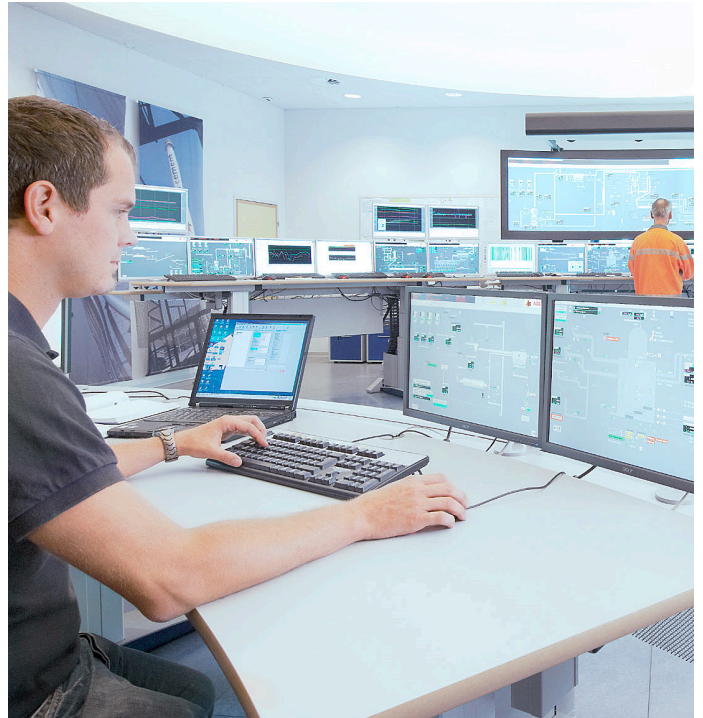


## Water Care Cyber Security Monitoring Service

ABB Cyber Security Monitoring Service identifies, classifies and helps prioritize opportunities to improve control system security. To find security weaknesses in a system's defense, ABB Cyber Security Monitoring Service collects system data for comparison against industry best practices and standards. This not only identifies areas that require action, but also adds additional protection by ensuring the system has multiple layers of security.



Life cycle service solutions for water plants

### Benefits:

- Protects valuable investments including control systems, equipment and production data
- Accelerates problem solving by providing visualization and analysis of security policies and computer settings
- Identifies trends to help develop mitigation plans for the most common security weaknesses
- Reduces response time and travel expenses by providing remote access to ABB experts
- Ensures continuous security status improvement and compliance with settings and procedures
- Aligns security settings with site-specific needs or corporate requirements
- Improves system availability through reduced security risk

# Protect control system

## Scheduled or on-demand monitoring of KPIs

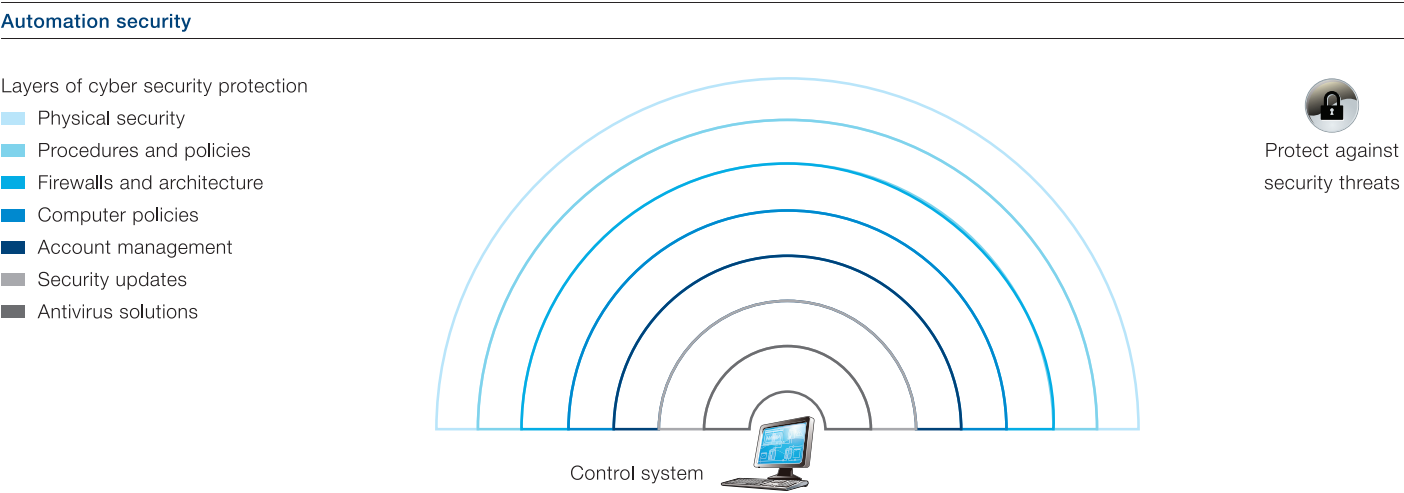


Figure 1: ABB uses the Defense in Depth strategy to ensure multiple layers of protection.

### Scheduled monitoring and analysis quickly identifies performance issues

The ABB Cyber Security Monitoring Service is a service delivery platform conveniently deployed at customer locations. View data through a user interface that is easily accessible by customer or ABB personnel.

The ABB Cyber Security Monitoring Service provides proactive data analysis to greatly reduce time and effort needed to identify software, hardware, system and network performance issues. Data is classified according to KPIs to provide a list of potential issues that are then prioritized based on severity, criticality and/or financial impact. This analysis allows users to track and trend performance more accurately, which leads to more informed decision-making and higher availability, as well as more easily ensuring that multiple layers of protection are in place (Figure 1).

### More accurate troubleshooting with configurable KPIs

The ABB Cyber Security Monitoring Service analyzes the following KPIs (Figure 1) to accelerate problem-solving:

- **Procedures and protocols:** Availability of, and agreement with, written instruction and policies.
- **Security policies:** Compliance with policies implemented on the system, enforced from a central server or implemented on an individual computer.
- **Computer settings:** Assurance that the appropriate settings and applications reside on each computer in the system.

# View, analyze and receive alerts on security status

## Cyber Security Monitoring Service components



Figure 2: Users can access three different views for each KPI. The above example shows the KPI analysis view for security policies. The display only shows KPIs that are outside their threshold and prioritizes them: the bigger the bar, the greater the probability that the KPI should be addressed.

### Clear view of data and analysis

Access and visualization of KPIs is provided through ServicePort Explorer. This easy-to-use interface offers three separate views of the data:

- **View:** Raw data allows customer and ABB service personnel to view data associated with Security and performance for further analysis
- **Scan:** Automatic KPI analysis presents a summary of KPIs, ranked by severity, that are outside set limits, so that users can begin addressing issues in order of priority
- **Track:** Users can specify sets of rules for KPIs and display each occurrence that falls outside a threshold, so that users can be proactively notified to address issues

### Expert analysis helps predict potential weaknesses

To ensure that your cyber security status is aligned with your security goals, ABB provides periodic performance analyses. ABB experts evaluate the status of your system's security level, determine the statistical accuracy of KPIs and find trends that predict potential vulnerabilities. The resulting performance report recommends actions to improve procedures and protocols, system policies and computer settings.

### Critical notification when it matters most

To prioritize issues that require immediate action, site-specific rules can be applied to targeted KPIs. Any KPI that tracks outside customizable, pre-determined parameters triggers an instant alert via email or text message. This quickly notifies users about issues that can compromise security, so they can be addressed as soon as they are detected.

# Contact us

ABB Inc.  
Power Generation  
Wickliffe, Ohio, USA  
Phone: +1 440 585 78 04  
E-Mail: [pspmarketing@us.abb.com](mailto:pspmarketing@us.abb.com)

ABB AG  
Power Generation  
Mannheim, Germany  
Phone: +49 621 381 33 33  
E-Mail: [powergeneration@de.abb.com](mailto:powergeneration@de.abb.com)

ABB Pte. Ltd.  
Power Generation  
Singapore  
Phone: +65 62 22 77 78  
E-Mail: [powergeneration@sg.abb.com](mailto:powergeneration@sg.abb.com)

ABB  
Power Generation  
Abu Dhabi, AE  
Phone: +971 2 493 80 00

ABB Co.  
Power Generation  
Beijing, China

ABB A/S  
Power Generation  
Skovlunde, Denmark

ABB Pty  
Power Generation  
Modderfontein, South Africa

ABB S.p.A.  
Power Generation  
Genoa, Italy  
Phone: +39 010 607 3512  
E-Mail: [powergeneration@it.abb.com](mailto:powergeneration@it.abb.com)

[www.abb.com/powergeneration](http://www.abb.com/powergeneration)



The information contained in this document is for general information purposes only. While ABB strives to keep the information up to date and correct, it makes no representations or warranties of any kind, express or implied, about the completeness, accuracy, reliability, suitability or availability with respect to the information, products, services, or related graphics contained in the document for any purpose. Any reliance placed on such information is therefore strictly at your own risk. ABB reserves the right to discontinue any product or service at any time.

© Copyright 2017 ABB. All rights reserved