

## ABB Resilience Pack

Ensure the most productive and protected control system

We face sophisticated cyber threats from state-sponsored hackers, hackers for hire, organized cyber syndicates, and terrorists. Private sector companies are the primary victims of cyber intrusions. And they also possess the information, the expertise, and the knowledge to address cyber intrusions and cyber crime in general.

— James Comey, Director, Federal Bureau of Investigation, USA



### Questions to consider

- Is your control system investment fully protected?
- Can you run your process without your control system?
- Can you afford even a day of downtime due to a cyber attack?

If your answers are no, consider the ABB Resilience Pack.

## ABB Resilience Pack

combines our best cyber security services for System 800xA with our best service for ensuring top 800xA performance, to protect your control system investment and make it work as efficiently as possible.

### ABB Resilience Pack



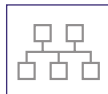
#### Cyber Security Monitoring Service,

powered by ServicePort™, identifies, classifies and helps prioritize opportunities to improve control system security. The Cyber Security Service Monitoring Service collects system data for comparison against industry best practices and standards to detect weaknesses in your system's defense. This pinpoints areas that require action to help protect your control system.



#### Security Update Service

keeps your control system updated and protected with validated Microsoft® security updates and verified antivirus files. ABB reviews, tests and validates Microsoft security updates and service packs for relevance and compatibility with ABB system software. McAfee® and Symantec™ updates, scan engines and virus definition files are verified for relevance and compatibility with ABB software.



#### System 800xA Performance Service,

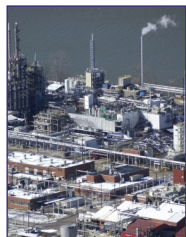
powered by ServicePort, uses data collected during scheduled and on-demand analyses and compares them to best practices and standards to detect performance issues. This comparison helps to improve system reliability, availability and performance. The analysis develops accurate trends so that more knowledgeable decisions can be made to improve systems performance.



#### ABB ServicePort

is a secure, remote-enabled service delivery platform that allows users to view, scan and track Key Performance Indicators (KPIs) to ensure maximum performance of equipment and processes, resulting in higher operational efficiency. ServicePort distills expertise ABB built over decades of equipment and process support into bundles of automatic services which are delivered efficiently on a global basis.

## Cyber Security and other Advanced Services case studies



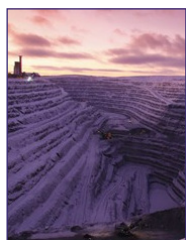
### Chemicals: Chemical Plant, WV, USA

To comply with internal cyber security standards and government agency requirements, the specialty chemical producer needed a complete review of the status of its software and computer security measures as well as an assessment of the potential for exposure from computer viruses or malware. ABB conducted a cyber security assessment at the site, which became the basis for the site's overall cyber security program.



### Metals: Cold-Rolling Mill, Spain

To review control system cyber security status and ensure software and antivirus programs were updated, the mill asked ABB to perform a cyber security assessment to help defend against cyber attacks. ABB found that the mill's process control systems were running outdated software. Additionally, the company was informed that they must upgrade its antivirus protection. These actions improved system protection.



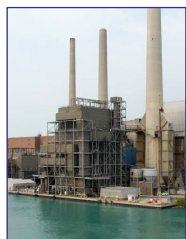
### Mining: Copper Mine, Boliden, Sweden

Boliden wanted to augment its existing cyber security program with a new perspective to ensure that they are doing all they can to mitigate cyber attacks, so they asked ABB to perform a cyber security assessment on the control system to validate existing policies, and identify areas of improvement. ABB recommended new actions for further protection, boosting Boliden's confidence in its cyber security protection.



### Oil & Gas: Middle Eastern Refinery

To ensure the facility's advanced security measures took their control systems into account, the refinery asked ABB to identify strengths and weaknesses for defending against a cyber attack. ABB's report provided recommendations to reduce cyber security vulnerability while helping to develop a focused and sustainable security strategy for the control systems.



### Power Generation: DTE Energy in MI, USA

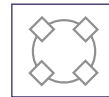
DTE contracted with ABB for 23 assessments of control systems and cyber security, distributed across multiple plants over three years. ABB's Cyber Security Performance Services identifies a control system's ability to defend against a cyber-attack or security breach. A resulting report recommends solutions to mitigate against cyber security vulnerabilities to help develop a sustainable control system security strategy.



### Pulp & Paper: Southeast Asian Paper Mill

With ABB Performance Services powered by ServicePort, the mill measurably improved equipment and process performance: the LV Drives Performance Service identified issues that improved drives performance; the Loop Performance Monitoring Service helped to improve fiber stability, refiner stability, and paper machine runnability; and the QCS Performance Service helped to improve product quality.

## Other Performance Services powered by ServicePort



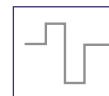
Harmony  
Performance Service



Hoist Performance  
Monitoring Service



Loop Performance  
Monitoring Service



Loop Tuning  
Accelerator Service



LV Drives  
Performance Service



QCS Performance  
Monitoring Service



QCS Transition  
Performance Service

#### ABB Inc.

#### Process Automation Service

579 Executive Campus Drive

Westerville, OH 43082-8870

Phone: +1 614 818 6300

E-Mail: [automation.service@us.abb.com](mailto:automation.service@us.abb.com)

[www.abb.com](http://www.abb.com)

