

IRB 760FX

Fast and flexible press automation robot

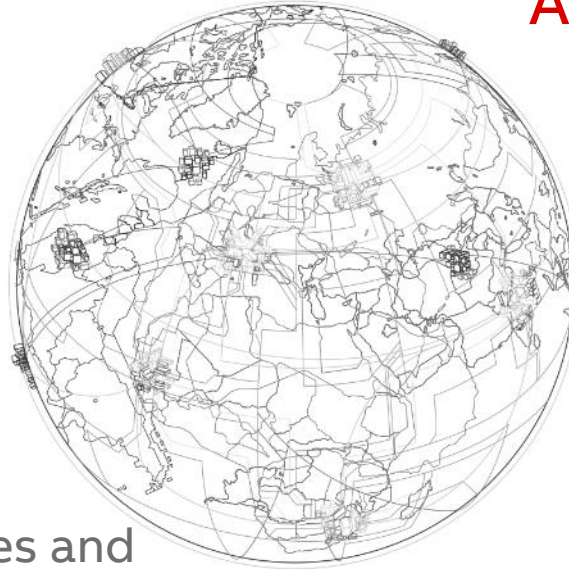


ABB Robotics

Key facts

Introduced painting robots in **1969** and the world's first commercially available electric robot in **1974**

Manufacturing in **Europe, Asia** and **America**



~ **5,500** employees

Technology leadership sales and service operations in **53** countries and more than **100** locations

Over **300,000** robots delivered worldwide

Business Line Press Automation

Key Facts



More than **200**
press automation
engineers



5 Application Centers



Complete portfolio.
Automation & Press
Motion



Pioneer in press
automation solutions

Global solutions for local execution and support

IRB 760FX

Fast and flexible transfer press automation robot

- High performance robot for press automation
 - High speed destacker
 - Press loading-unloading
 - Interpress part transfer
- Unmatched flexibility in high speed.
- Easy-to-use.
- Reduced maintenance costs.
- Enabled for automatic tool change.



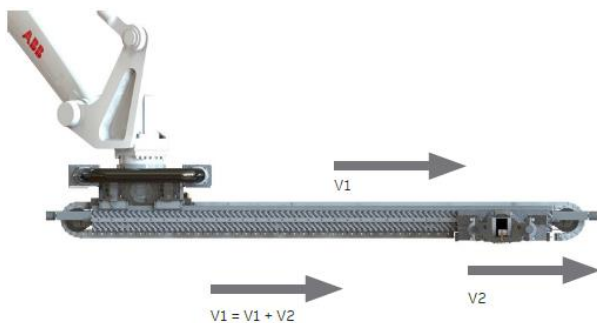
IRB 760FX

Fast and flexible transfer press automation robot

High performance robot

15-20% faster press automation robot with unique repeatability, load capacity and flexibility.

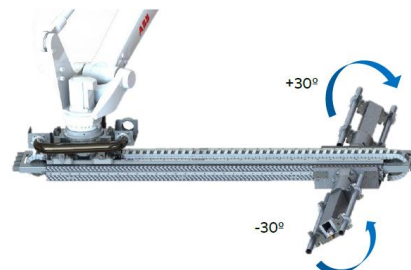
- output rate of up to 14 parts per minute (spm).
- reinforced carbon fiber structure.



Unmatched flexibility

Two servo-tilting modules ($\pm 30^\circ$) integrated in the linear axis for maximum flexibility.

- part reorientation, tilting and part separation.
- single or double independent tilting.
- enabled for fast Automatic Tool Change (ATC) .



Easy to use

Running on StampWare to facilitate interaction between operator and press automation.

- Programming wizard.
- Operator interface.



IRB 760FX

Product Specifications

Handling capacity:

- 100 Kg

Reach:

- 3.2 + 1.65 m

Max output:

- 14 spm interpress
- 20 spm press loading

Tilting:

- Single and double part
- $\pm 30^\circ$

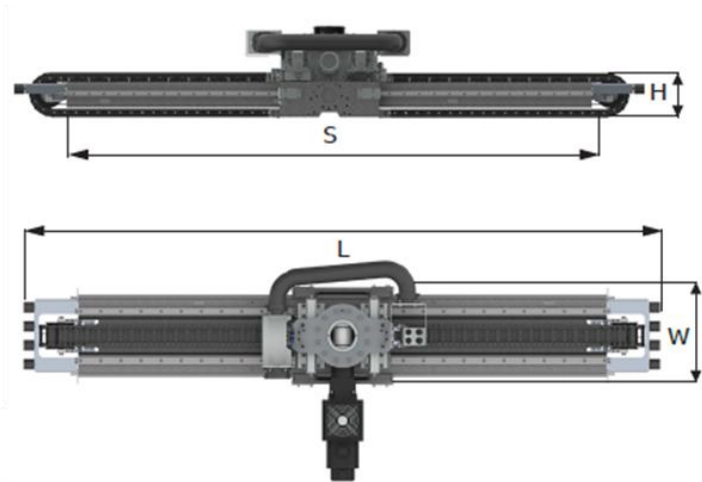


IRB 760FX

Product specifications

Linear Axis

| Linear 7th axis | Value |
|-----------------|-------|
| S - stroke (mm) | 1650 |
| L - length (mm) | 2520 |
| H - height (mm) | 175 |
| W - width (mm) | 400 |

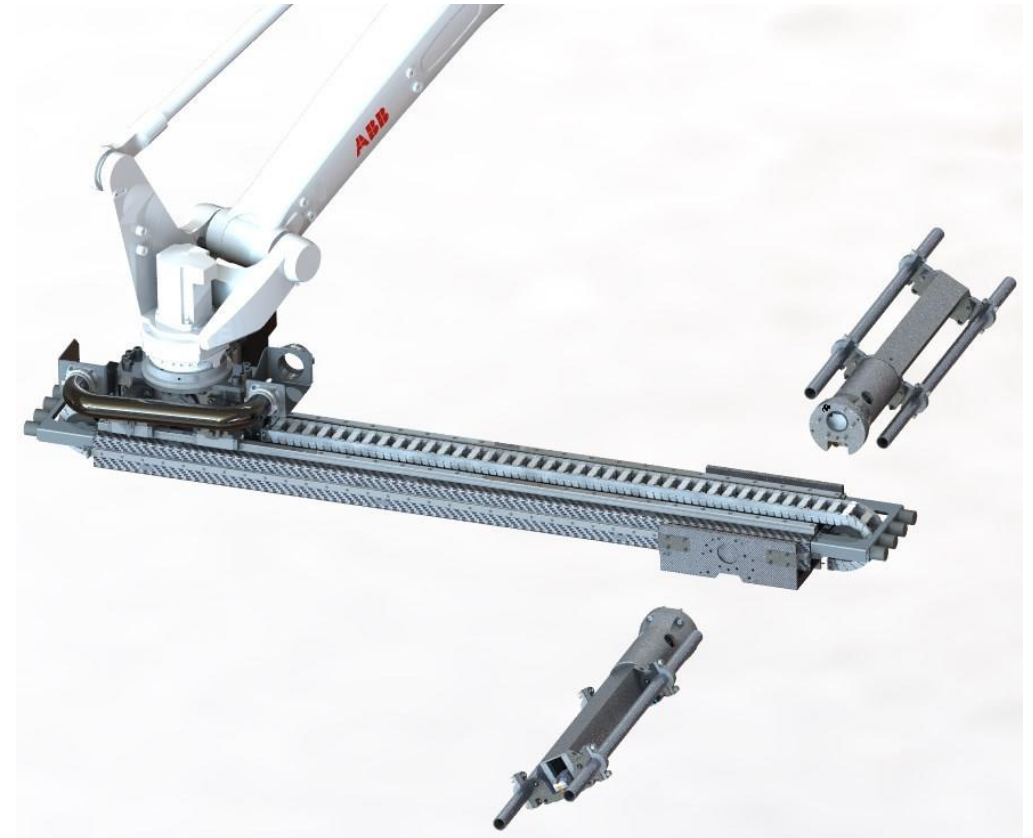
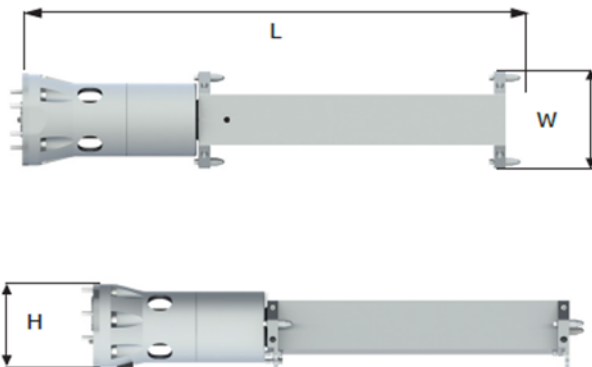


IRB 760FX

Product specifications

Tilting

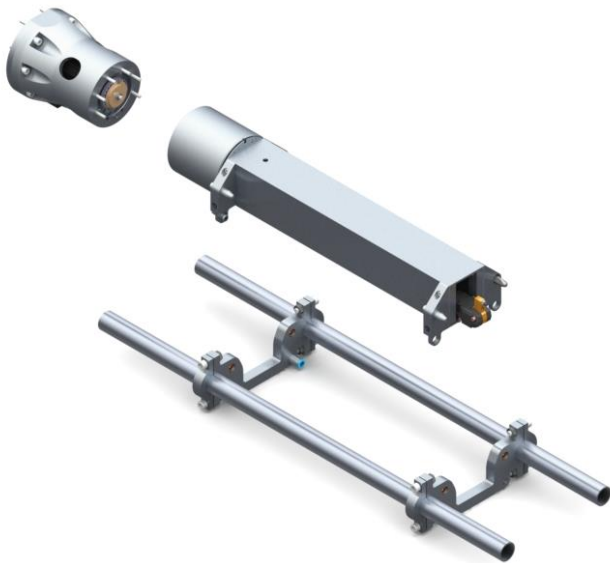
| Tilting module | Value |
|-----------------|--------|
| Angle (°) | +/- 30 |
| L – lenght (mm) | 915 |
| H – height (mm) | 150 |
| W – width (mm) | 174 |



IRB 760FX

Modular tool change solution

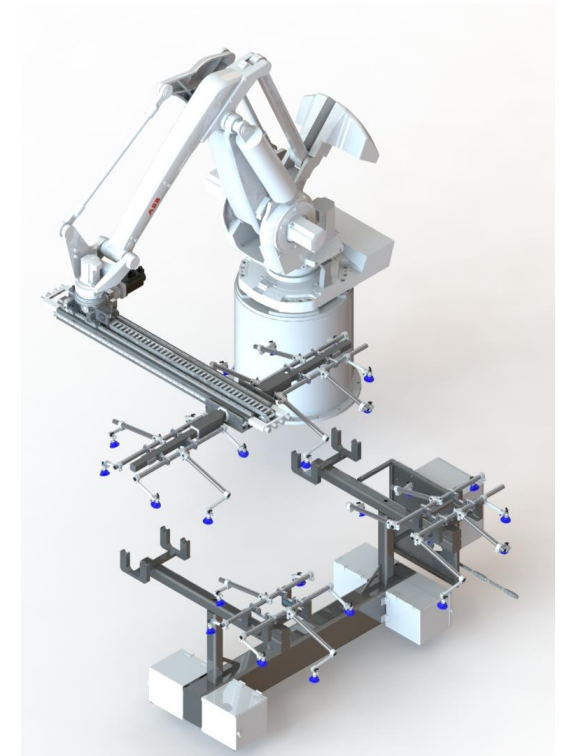
Modular crossbar design



Integrated tool change system



Fast production changeover



ABB