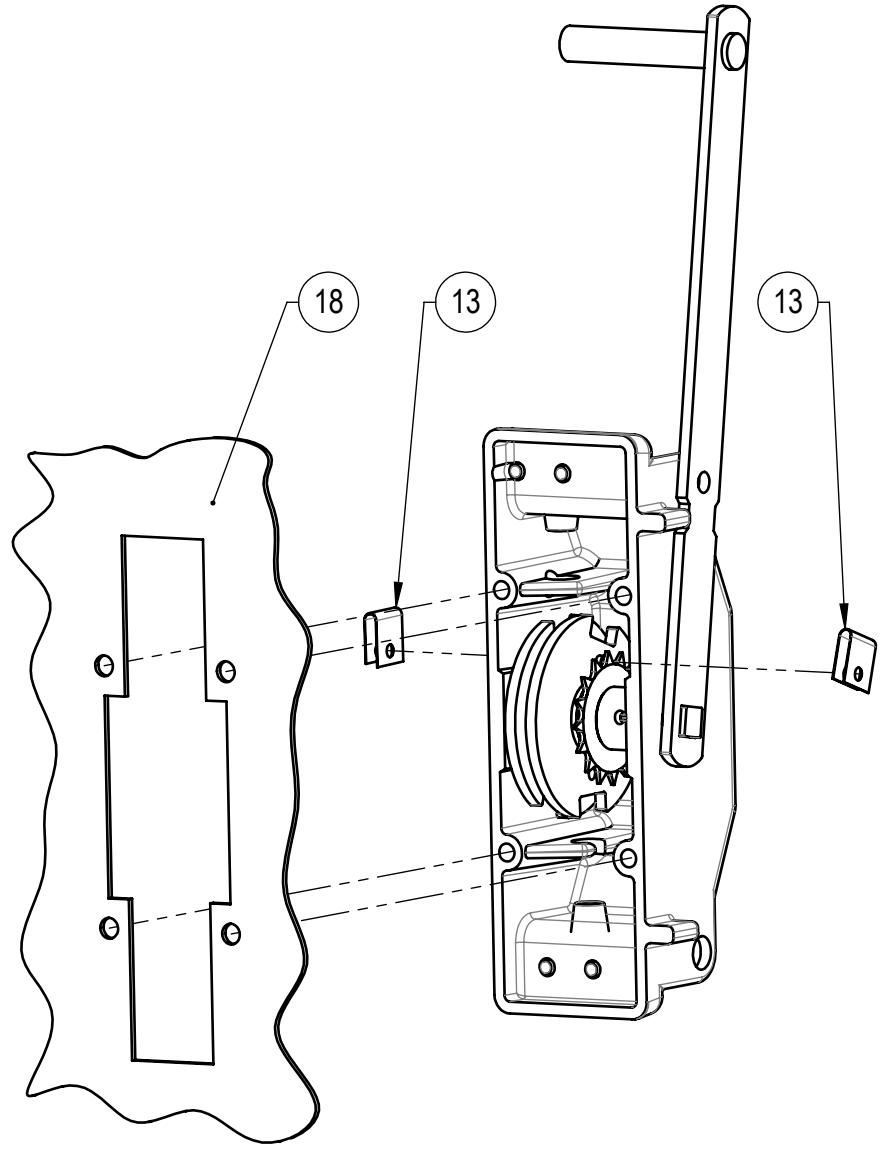
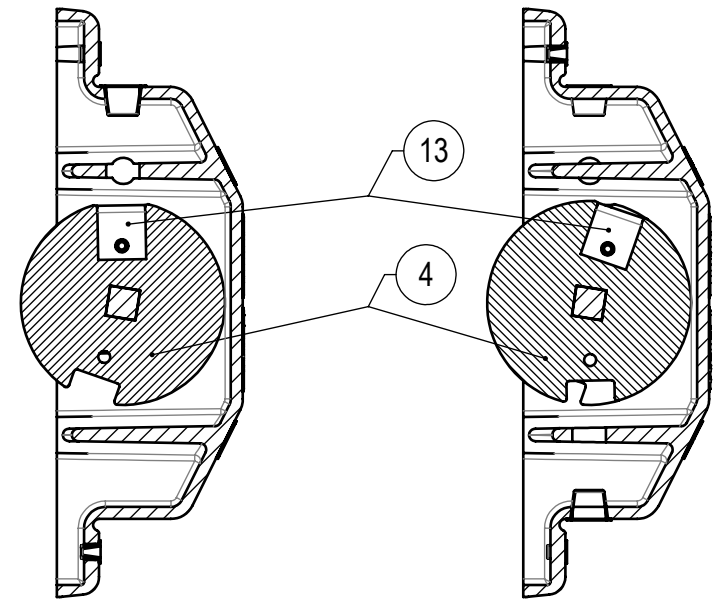
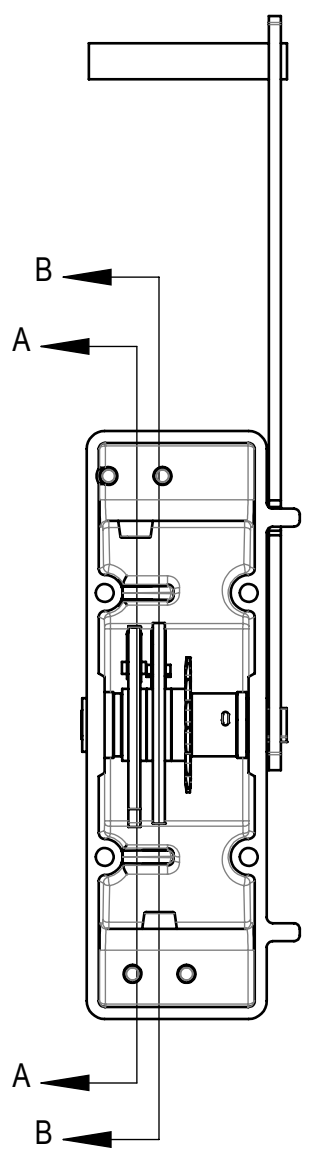


- NOTES:
- 1. WHEN THE CHAIN DRIVE HANDLE IS DOWN, THE SWITCH IS IN THE OPENED POSITION WITH LOCK ABILITY FROM A TOP MOUNTED F-TYPE KIRK KEY.
 - 2. TO LOCK THE CHAIN DRIVE HANDLE IN THE OPENED POSITION WITH A BOTTOM MOUNTED KIRK KEY, REMOVE BLOCKING TAB (13) ON DISC (4) IN SECTION B-B.
 - 3. WHEN THE CHAIN DRIVE HANDLE IS UP, THE SWITCH IS IN THE CLOSED POSITION WITH LOCK ABILITY FROM A BOTTOM MOUNTED F-TYPE KIRK KEY.
 - 4. TO LOCK THE CHAIN DRIVE HANDLE IN THE CLOSED POSITION WITH A TOP MOUNTED KIRK KEY, REMOVE BLOCKING TAB (13) ON DISC (4) IN SECTION A-A.
 - 5. THIS VERSION OF CHAIN DRIVE HANDLES DOESN'T COME WITH A DOOR INTERLOCK DISC TO ALLOW DOOR OPENING WITH THE SWITCH IN AN OPEN STATE.
 - 6. REFERENCE THE RECOMMENDED MOUNTING CUT OUT (18) IN DRAWING #(2RGA025282P0001) FOR FURTHER DETAILS.

CHAIN DRIVE IN CLOSED POSITION



EXPLODED VIEW

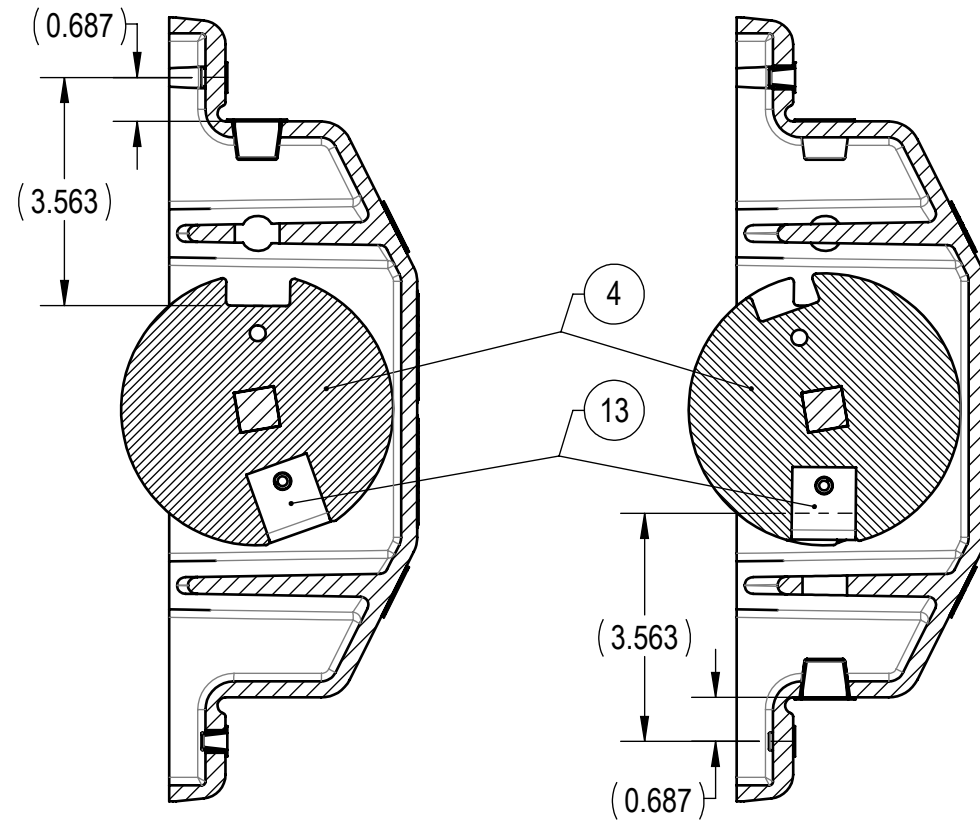
TABLE FOR REFERENCE ONLY

QTY	PC. NO.	DRAWING NO.	DESCRIPTION
2	4	2RGA024693P0001	CHAIN DRIVE DOUBLE KIRK KEY LOCKING DISC
2	13	2RGA023644P0001	KIRK KEY BLOCKING TAB CHAIN DRIVE
1	18	2RGA025282P0001	CHAIN DRIVE MOUNTING CUT OUT



Revision B	Responsible USTRA	Scale 1:4	Language EN	Title (CUSTOMER COPY) LEFT SIDE CHAIN DRIVE DOUBLE KIRK KEY LOCKING	Format B
ABB Technology Ltd.				Drawing No. 2RGA024702A0012	Sheet No. 2 / 3

1. WHEN THE CHAIN DRIVE HANDLE IS DOWN, THE SWITCH IS IN THE OPENED POSITION WITH LOCK ABILITY FROM A TOP MOUNTED F-TYPE KIRK KEY.
2. TO LOCK THE CHAIN DRIVE HANDLE IN THE OPENED POSITION WITH A BOTTOM MOUNTED KIRK KEY, REMOVE BLOCKING TAB (13) ON DISC (4) IN SECTION D-D.
3. WHEN THE CHAIN DRIVE HANDLE IS UP, THE SWITCH IS IN THE CLOSED POSITION WITH LOCK ABILITY FROM A BOTTOM MOUNTED F-TYPE KIRK KEY.
4. TO LOCK THE CHAIN DRIVE HANDLE IN THE CLOSED POSITION WITH A TOP MOUNTED KIRK KEY, REMOVE BLOCKING TAB (13) ON DISC (4) IN SECTION C-C.
5. THIS VERSION OF CHAIN DRIVE HANDLES DOESN'T COME WITH A DOOR INTERLOCK DISC TO ALLOW DOOR OPENING WITH THE SWITCH IN AN OPEN STATE.

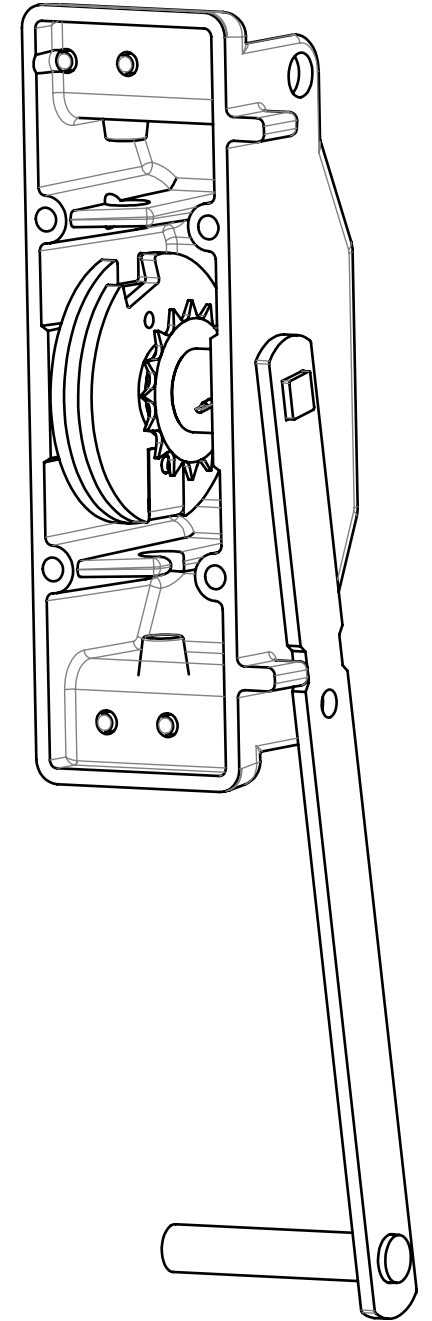
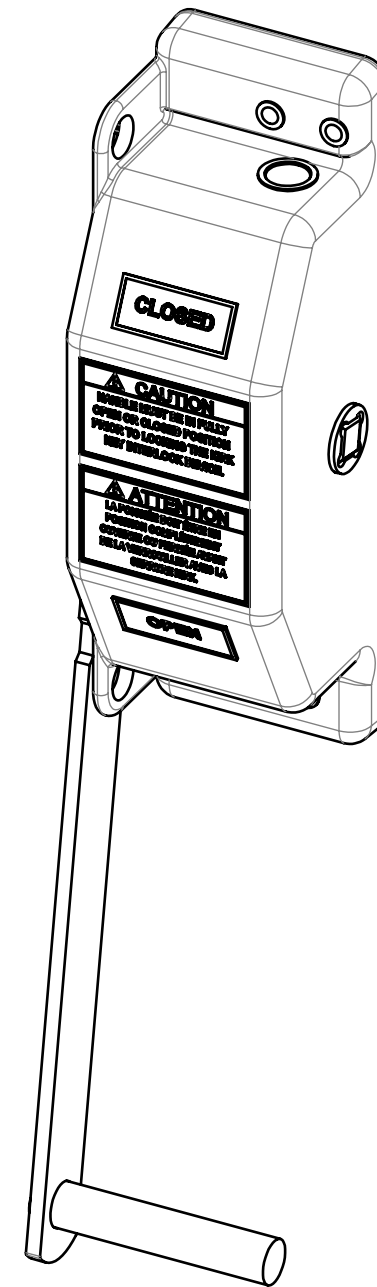


SECTION C-C
KIRK KEY DISK

SECTION D-D

KIRK KEY DISK

CHAIN DRIVE IN OPENED POSITION



CONFIDENTIAL
The information contained in this document has to be kept strictly confidential.
Any unauthorized use, reproduction, distribution or disclosure to third parties
is strictly forbidden. ABB reserves all rights regarding Intellectual Property Rights
© Copyright 2015 ABB. All rights reserved.

Dimensions are in inches [mm]

STANDARD DIMENSIONING AND TOLERANCING PER
ANSI Y 14.5-1994, UNLESS OTHERWISE STATED:
XXX = $\pm .015$ X° = $\pm 1^\circ$
XX = $\pm .03$.X° = $\pm .5$



Revision
B

Responsible USTRA	
-----------------------------	--

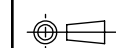
Scale
1:3

Language
EN

Title	(CUSTOMER COPY) LEFT SIDE CHAIN DRIVE DOUBLE KIRK KEY LOCKING
-------	---

Format
B

ABB Technology Ltd.



	Drawing No.
--	-------------

2RGA024702A0012

Sheet No.
3 / 3