

# Contacts



## ABB Limited

### Measurement & Analytics

Peenya Industrial Area  
Bangalore-560058  
India  
Toll free: 1800 420 0707  
International: +91 80 67143000  
Mail: [contact.center@in.abb.com](mailto:contact.center@in.abb.com)  
Web form: [www.abb.co.in/contacts](http://www.abb.co.in/contacts)

## ABB Limited

### Measurement & Analytics

Oldends Lane  
Stonehouse  
Gloucestershire GL10 3TA  
UK  
Tel: +44 (0)1453 826 661  
Fax: +44 (0)1453 829 671  
Mail: [instrumentation@gb.abb.com](mailto:instrumentation@gb.abb.com)

## ABB Inc.

### Measurement & Analytics

125 E. County Line Road  
Warminster, PA 18974  
USA  
Tel: +1 215 674 6000  
Fax: +1 215 674 7183

[www.new.abb.com/products/measurement-verification](http://www.new.abb.com/products/measurement-verification)

We reserve the right to make technical changes or modify the contents of this document without prior notice. With regard to purchase orders, the agreed particulars shall prevail. ABB does not accept any responsibility whatsoever for potential errors or possible lack of information in this document.

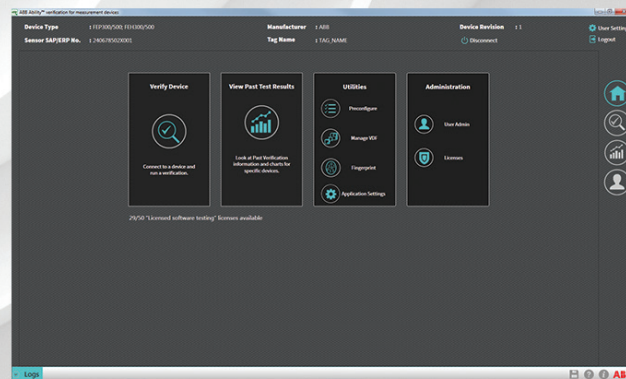
We reserve all rights in this document and in the subject matter and illustrations contained therein. Any reproduction, disclosure to third parties or utilization of its contents – in whole or in parts – is forbidden without prior written consent of ABB.

© ABB, 2018  
All rights reserved

LL/SRV500/OH-EN Rev. A 04.2018

## ABB MEASUREMENT & ANALYTICS

# ABB Ability Verification for measurement devices License ordering process



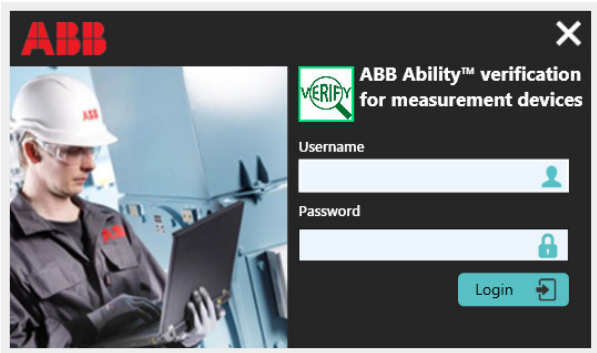
# Installation and ordering guide


## Introduction

The software license is linked to the intended Verification software loaded on the computer MAC ID. To ensure the fastest order handling it is advisable to follow the process below.

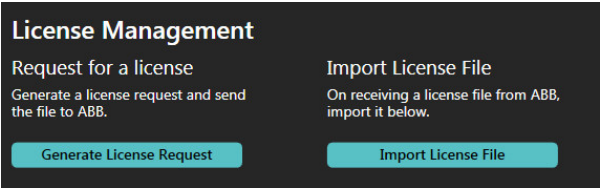
- 1 Download Verification Tool from the following [link](#) and install it on the target PC, ensuring it is installed as administrator.
- 2 Launch the application and enter the following username and password:

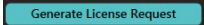
Username: Admin  
Password: 123




- 3 Click  on the dashboard.

The license management screen is displayed:



- 4 Click .

Save the generated C2V file to the PC's hard drive.

- 5 Email the C2V file to your local ABB office handling your quotation and order.
- 6 Once your order has been processed you will receive a C2V license file unlocking the needed features and device verification capability
- 7 Save the file to a convenient location and click  to upload the file.
- 8 Your software is now ready. Refer to the [Operating Instruction](#) for more detailed guidelines.
- 9 Enjoy using this software.

Flow verification services



ABB Ability Verification for measurement devices

