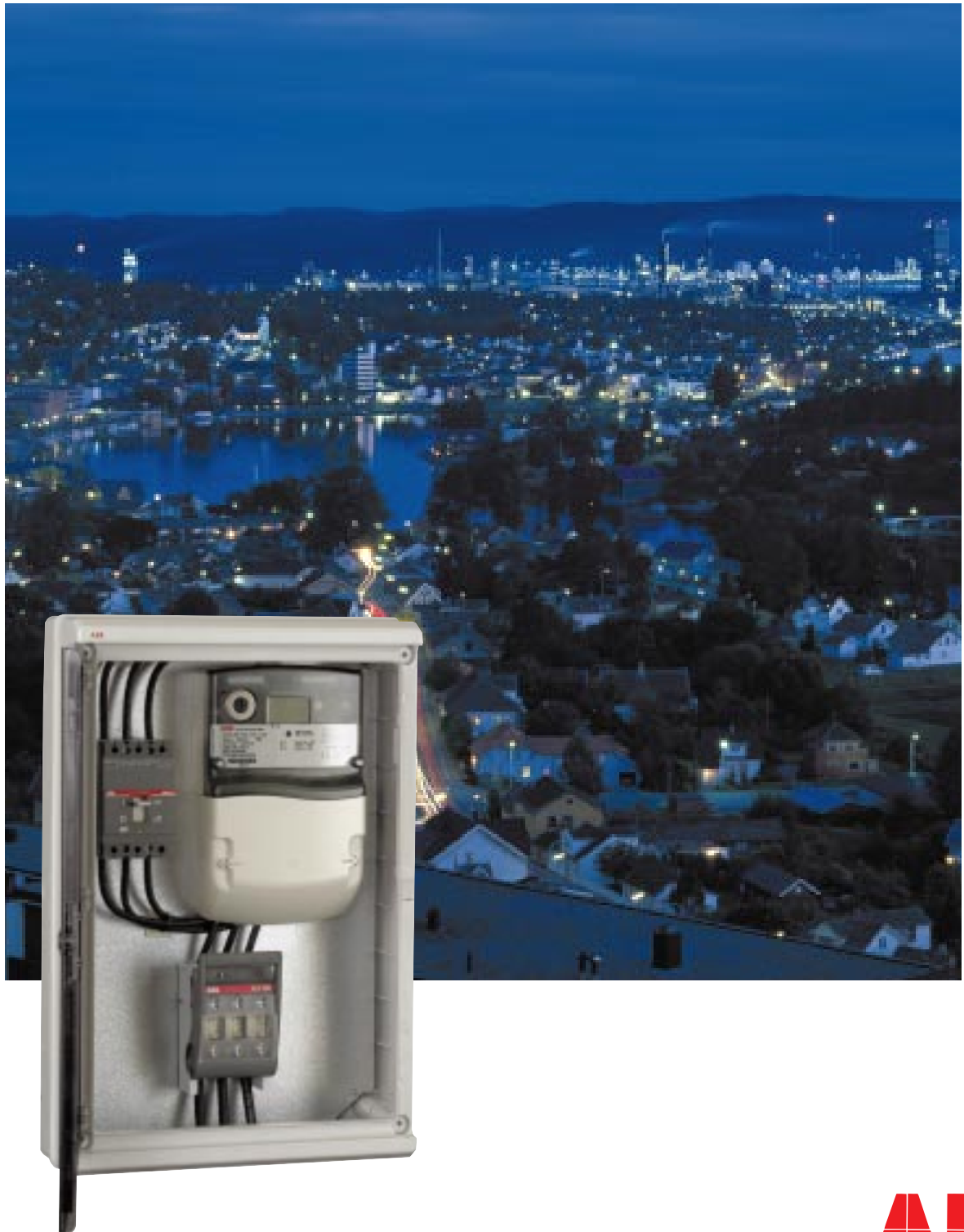


Meterbox systems

– The timesaving solution



ABB

One solution – all possibilities

The Meterbox solution will save you time and money.

The Meterbox has a basic version including only the short circuit protection, consisting of a triple pole fuse switch from the EasyLine range, already mounted inside the box. By using the EasyLine fuse switch, we offer the optimal and very inexpensive short circuit solution.

Advantages:

- All parts are delivered by ABB and we guarantee ABB quality and technical competence.
- Very quick installation from the basic to the complete solution – timesaving.

Additionally we can deliver the Meterbox with the following equipment installed:

- ABB MCCB, as overload protection
- ABB Energy Meter (1-phase or 3-phase)
- DIN rail mounting device
- Terminal board

– and offer you a complete solution

The Meterbox

Properties:

- Produced in 7035 RAL grey color self-quenching cable termination
- Temperature resistant up to 960° degrees (filament test) in accordance with IEC 695-2-1.
- Low content of halogen.
- Designed for temperatures from -20 to +115 degrees centigrade under constant use.
- Impact resistant up to 20 Nm.
- Capable of withstanding; water, saline, acid, base solutions, petroleum and is weatherproof.
- High protection against UV-radiation
- IP 65



Meterbox Dimensions:
W=275 H=570 D=140
W=380 H=570 D=140

Other sizes available
on request.

EasyLine

Properties:

- Inexpensive short circuit protection
- Short circuit capacity: 50kA
- Typetested according to IEC/EN 60947-3
- Integrated IP 20 cable shroud
- IP 30 degree of protection from the front

The Meterbox is delivered with XLP000 (max 100A fuse) main short circuit protection as standard. XLP00 (160A fuse) on request.

Sealing facility

Cable clamp

ABB

ABB Control AS

P.O. Box 100, Sentrum,
N-3701 Skien, Norway
Tel. +47 35 58 25 00
Fax +47 35 58 28 00
e-mail: abb.control@no.abb.com

For further information about this complete solution, please contact your local ABB office.