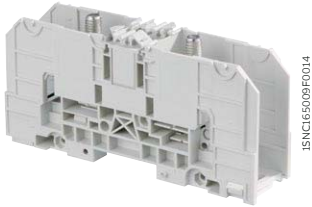
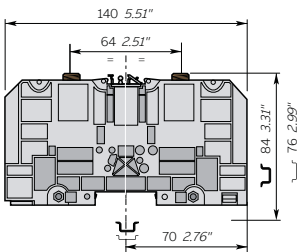


D120/42.FF power terminal blocks

Feed-through - 42 mm 1.653 in spacing



D120/42.FF



42 mm 1.653 in spacing

Description

- Rated cross section up to 300 mm² / 1000 Kcmil, IP20 protection cover,
- Holding foot on DIN 3 rail with two positions for an easy mounting, lug mounting in accordance with NF C 20-130 and DIN 46234, various marking options, rail or base mounting.

Ordering details

Description	Color	Type	Order code	Pkg qty	Weight (1 pce) g
Feed-through 2 studs M10 without cover	Grey <input type="checkbox"/>	D120/42.FF	1SNA190003R2200	1	423.00

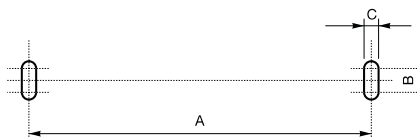
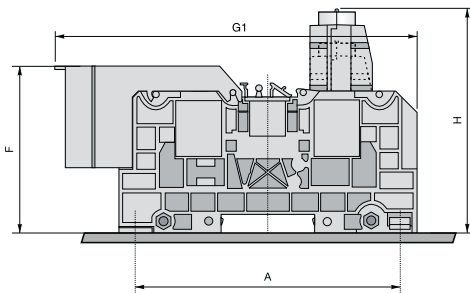
Main technical data

Connecting capacity	NFC	DIN	UL	CSA	Mounting instructions
Lugs	Rigid - Solid / Stranded Flexible Gauge	6-150 mm ² 6-120 mm ² C8	300 Kcmil		Rail TH 35-7.5, TH 35-15 Wrench H17 mm
Screw clamp	Rigid - Solid / Stranded Flexible Gauge	IEC	UL	CSA	Torque 10 - 20 N.m 87 - 174 lb.in Jumper screw Allen key 6 mm 0.236 in
Bar		IEC	UL	CSA	Torque 6 - 12 N.m 52 - 104 lb.in
Rated current	269 A		269 A		Screw clamp Tool
Rated cross section	120 mm ²		300 Kcmil		Torque
Rated voltage	1000 V		600 V		Wire stripping length
Impulse withstand voltage	8000 V				

The connecting capacity data for one Rigid - Solid / Stranded - Flexible conductor (when applicable) is a mandatory information required by IEC, UL and CSA standards. All other data is provided as supplementary information only. For more details, please consult our CB, UL or CSA certificates and technical datasheet available on <http://www.abb.com>



Main dimensions mm



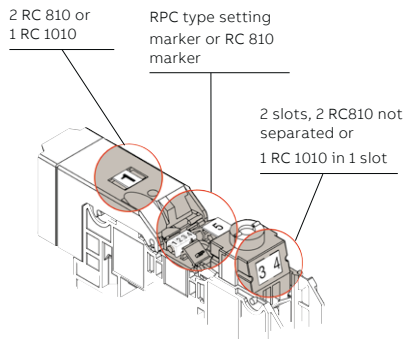
D35/27.AF - D70/32.AF - D120/42.AF
D35/27.FF - D70/32.FF - D120/42.FF

Type	Mounting with:	A	B	C	D	F	G1	G2	H
D120/42...	2 Screws	120	7.5	6.5	/	83.5	197	255.5	129.7

Power terminal blocks

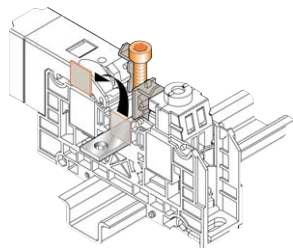
Mounting instructions

Marking



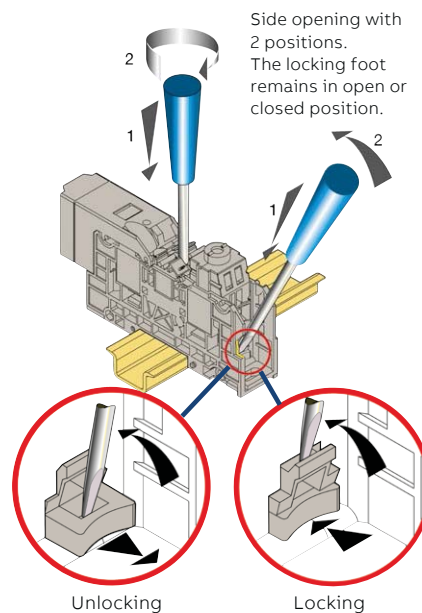
Jumper bar

- move the marker holders up
- cut out the partition
- screw the jumper bar

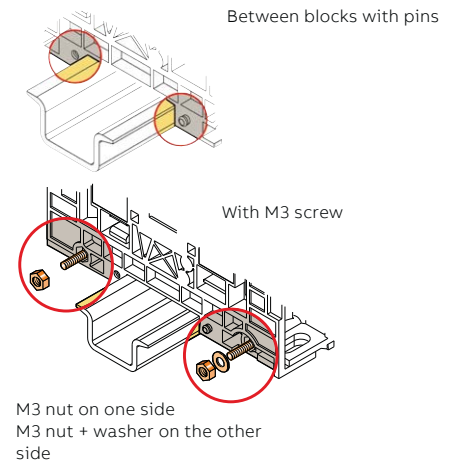


Locking foot operating with screwdriver DIA. 4 mm

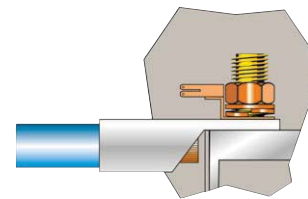
Center opening (to be made after jumper bar has been removed) "monostable action".
As soon as the screwdriver is removed, the locking foot comes back to closed position



Locking



Mounting of the derivative system



Contact us

ABB France
Low Voltage Products Division
3, rue Jean Perrin
F-69687 Chassieu cedex / France



www.abb.com/lowvoltage



www.abb.com/connecttocontrol

