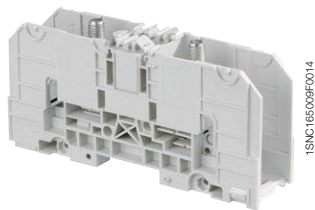


| | | |
|---|---|---|
|  |  | 120 mm² <i>300 Kcmil</i> |
|---|---|---|

[illegible]

Description

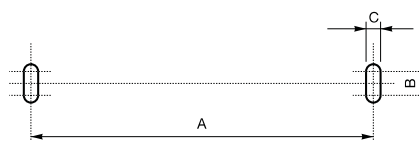
- Rated cross section up to 300 mm² / 1000 Kcmil, IP20 protection cover,
- Holding foot on DIN 3 rail with two position for easy mounting, lug mounting in accordance with NF C 20-130 and DIN 46234, various marking options, rail or base mounting.

| Description | Color | Type | Order code | Pkg qty | Weight (1 pce) |
|---|--|------------|-----------------|------------|-------------------|
| Feed-through 2 studs M10 without cover | Grey  | D120/42.FF | 1SNA190003R2200 | 1 | 423.00 |

| Main technical data | | | | | | Mechanical features | | |
|----------------------------------|--------------------------|------------|------------|-----------|------------|-----------------------|---|-------------------------------|
| Connecting capacity | | NFC | DIN | UL | CSA | Rail |  | TH 35-7,5, TH 35-15, |
| Lugs | Rigid - Solid / Stranded | 6-150 mm² | 6-120 mm² | 300 Kcmil | | Lugs | | Wrench |
| | Flexible | 6-120 mm² | | | | Tool |  | H17 mm |
| | Gauge | C8 | | | | Torque |  | 10 - 20 N.m 87 - 174 lb.in |
| | | IEC | | UL | CSA | Jumper screw | | Allen key |
| Screw clamp | Rigid - Solid / Stranded | | | | | Tool |  | 6 mm 0.236 in |
| | Flexible | | | | | Torque |  | 6 - 12 N.m 52 - 104 lb.in |
| | Gauge | | | | | Screw clamp | | |
| | | IEC | | UL | CSA | Tool |  | |
| | | | | | | Torque |  | |
| Bar | | | | | | Wire stripping length |  | |
| Rated current | | 269 A | | 269 A | | | | |
| Rated cross section | | 120 mm² | | 300 Kcmil | | | | |
| Rated voltage | | 1000 V | | 600 V | | | | |
| Impulse withstand voltage | | 8000 V | | | | | | |

The connecting capacity data for one Rigid / Solid / Stranded - Flexible conductor (when applicable) is a mandatory information required by IEC, UL and CSA standards. All other data are provided as supplementary information only. For more details, please consult our CB, UL or CSA certificates and technical datasheet available on <http://www.abb.com>

RoHS RoHS
USR CNR



D35/27.AF - D70/32.AF - D120/42.AF
D35/27.FF - D70/32.FF - D120/42.FF

| Type | Mounting with: | A | B | C | D | F | G1 | G2 | H |
|------------|----------------|---------------|-----|-----|---|------|-----|-------|-------|
| | | Dimensions mm | | | | | | | |
| D120/42... | 2 Screws | 120 | 7.5 | 6.5 | / | 83.5 | 197 | 255.5 | 129.7 |

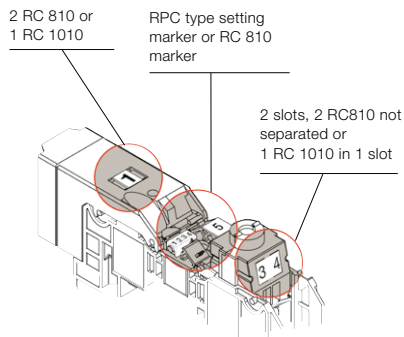
Power and productivity
for a better world™

The ABB logo, consisting of the letters 'ABB' in a stylized, bold, red font. Each letter is composed of several rectangular blocks, giving it a modular appearance.

Power terminal blocks

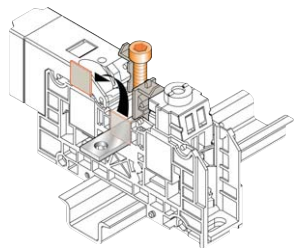
Mounting instructions

Marking



Jumper bar

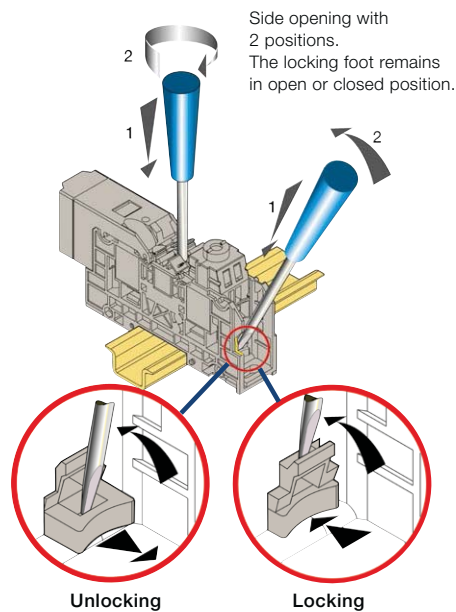
- move the marker holders up
- cut out the partition
- screw the jumper bar



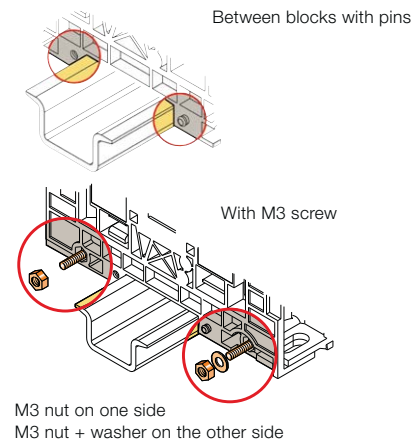
Locking foot operating with screwdriver DIA. 4 mm

Center opening (to be made after jumper bar has been removed) "monostable action".

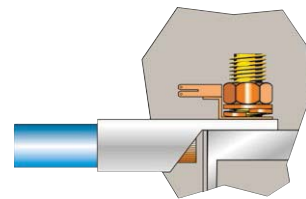
As soon as the screwdriver is removed, the locking foot comes back to closed position



Locking



Mounting of the derivative system



Contact us

ABB France
Low Voltage Products Division
 3, rue Jean Perrin
 F-69687 Chassieu cedex / France



www.abb.com/lowvoltage



www.abb.com/connecttocontrol