



US Catalog | March 2017

## Welcome® Door Entry System







# Table of contents

<b>Section 1</b>	
Overview	2
<b>Section 2</b>	
Home kit	6
<b>Section 3</b>	
Outdoor station (OS)	9
<b>Section 4</b>	
Indoor station (IS)	21
<b>Section 5</b>	
Accessories	25
<b>Section 6</b>	
System devices (SD)	26



# Customize to fit your needs

ABB Welcome opens up new possibilities for both sides residents and guests. It provides comprehensive comfort, greater security and elegant design. The systems blends harmoniously with the exterior architecture. ABB Welcome's attractive design complements all home designs and innovative technology meets expectations of security.



01



02



03



04

- 01 Single-family home
- 02 Town home
- 03 Apartment buildings
- 04 Residential complexes





01



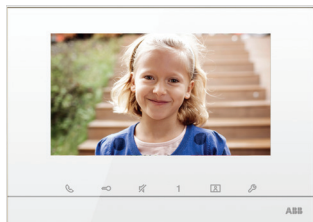
02



03



04



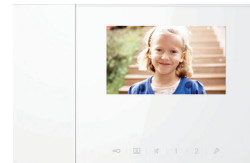
05



06



07



08



09

## ABB Welcome

- 01 Video keypad outdoor station, stainless steel
- 02 Video outdoor station, 1 round button, stainless steel
- 03 Video outdoor station, 1/2 pushbutton, aluminum
- 04 Mini outdoor station, 1 pushbutton, aluminum
- 05 7" video hands-free indoor station, white
- 06 4.3" video hands-free indoor station, white
- 07 Basic 4.3" video hands-free indoor station, white
- 08 4.3" video handset indoor station, white
- 09 Audio hands-free indoor station, white



# One solution for all requirements

The Welcome range of door entry system offers security, ease of use, more flexible installation solutions. From single-family homes to complex residential complexes, Welcome provides one flexible solution for your door entry security and communication requirements.

## ABB Welcome maximum capacity

- 600 m from gate station to last indoor station
- 250 indoor stations per building
- 60 buildings
- 9 guard units
- 9 outdoor stations for each residence (including gate stations, outdoor stations and second-confirmed outdoor stations)



### 01 Single-family homes

Welcome provides a secure, flexible and simple solution for single-family homes offering audio and video functionality. Welcome is easy to expand by simply adding additional devices.



### 02 Audio solution for multi-family homes and buildings

Welcome provides a superior audio system solution that allows for easy upgrades to video.

### 03 Video solution for multi-family homes and buildings

Welcome provides a high performance video system with 2-wire video technology for multi-family homes and buildings. Its simple design easily integrates into new construction or renovation.



### 04 Network solutions for residential complexes

Welcome meets the need for networked security and communication in larger complexes such as high-rise apartments or condominiums.



# Home kit

## ABB Welcome Compact Kits

Each kit contains everything needed to complete the installation and perform the desired function.







Kit	Description	Catalog number
Audio kit	Audio single-family home kit Audio outdoor station, 1/2 push button, aluminum Flush mounted box, size 1/1 Mini system controller Audio handset indoor station, 3 buttons, white	M20001
Audio kit	Audio single-family home kit Audio outdoor station, 1/2 pushbuttons, aluminum Flush-mounted box, size 1/1 Min-system controller Audio handsfree indoor station, 4 buttons,white	M20011

Kit	Description	Catalog number
Video kit	<p>Video single-family home kit</p> <p>Video outdoor station, 1/2 push button, aluminum</p> <p>Flush mounted box, size 1/2</p> <p>Mini system controller</p> <p>4.3" color video handset indoor station, white</p>	<p><b>M20311</b></p> 
Video kit	<p>Video single-family home kit</p> <p>Video outdoor station, 1/2 pushbutton, aluminum</p> <p>Flush mounted box, size 1/2</p> <p>Mini system controller</p> <p>4.3" video hands-free indoor station, white</p>	<p><b>M20321</b></p> 
Video kit	<p>Video single-family home kit</p> <p>Video outdoor station, 1 button, stainless steel</p> <p>Flush mounted box, size 1/3</p> <p>System controller</p> <p>7" video hands-free indoor station, white</p> <p>IP Gateway</p>	<p><b>M20702</b></p> 
Video kit	<p>Mini OS kit</p> <p>Mini video outdoor station, 1 pushbutton</p> <p>Basic 4.3" video hands-free indoor station</p> <p>Mini system controller</p>	<p><b>M20365</b></p> 
Video kit	<p>Video single-family home kit without indoor station</p> <p>Video outdoor station, 1/2 push button, aluminum</p> <p>Flush mounted box, size 1/2</p> <p>Mini system controller</p> <p>IP Gateway</p> <p>Indoor station is not included in the kit, but all indoor stations range can be selected.</p>	<p><b>M20351</b></p> 



# Home kit

Kit	Description	Catalog number
Video kit	Video 1 family kit Mini video outdoor station, 1 pushbutton 4.3" Color video handset indoor station, white Mini system controller	M20371  
Video kit	Video 1 family kit Mini video outdoor station, 1 pushbutton Min system controller IP Gateway	M20353 
Video kit	Video 1 family kit Mini video outdoor station, 1 pushbutton 4.3" Video hands-free indoor station Mini system controller	M20381  

# Outdoor stations

## Stainless steel



### Audio outdoor station, stainless steel

- Clean design with brushed stainless steel.
- Can be surface or flush mounted.
- Different mode setting is possible for pushbutton, such as light switch and calling guard.
- Dust and waterproof to IP54.
- Tamper-proof to IK07.
- Product dimensions: size 1X2:7.91 x 4.92 x 1.93 inches. size 1X3:10.79 x 4.92 x 0.75 inches.

Description	Pack qty.	Catalog number
Audio outdoor station, 1 pushbutton, stainless steel	1/19	M21011P1-S
Audio outdoor station, without pushbuttons, size 1/2, stainless steel	1/19	M21013N3-S
Audio outdoor station, without pushbuttons, size 1/3, stainless steel	1/19	M21013N6-S



### Video outdoor station, 1 button and 2 button optional

- Clean design with brushed stainless steel.
- Can be surface or flush mounted.
- Different mode setting is possible for pushbutton, such as light switch and calling guard.
- Dust and waterproof to IP54.
- Tamper-proof to IK07.
- Product dimensions: 1/3:0.79 x 4.92 x 0.75 inches. size 1/4:13.66 x 4.92 x 1.93 inches.

Description	Pack qty.	Catalog number
Video outdoor station, 1 pushbutton, Stainless steel	1/12	M21321P1-S
Video outdoor station, 1 pushbutton, stainless steel, with NFC/IC function	1/12	M21322P1-S
Video outdoor station, without pushbuttons, size 1/3, stainless steel	1/12	M21323N3-S
Video outdoor station, without pushbuttons, size 1/4, stainless steel	1/12	M21323N6-S



### Video keypad outdoor station with speech synthesis

- Clean design with brushed stainless steel.
- Built-in card reader in display module, support IC (13.56 MHz) card and ID (125 KHz) card.
- Can be surface mounted (41024F and 51024RH required) and flush mounted 41024F required.
- Dust and waterproof to IP54.
- Tamper-proof to IK07.
- Product dimensions: 13.66 x 4.92 x 1.93 inches.

Description	Pack qty.	Catalog number
Video outdoor station with keypad, ID, stainless steel	1/12	M21321K-S
Video outdoor station with keypad, IC, stainless steel	1/12	M21322K-S

## Outdoor station-aluminum



### Mini outdoor station, one button / two buttons

- Compact size.
- Surface mounted.
- Available with one and two round.
- Available with optional ID (125 KHz) reader.
- Clean design with integrated status display.
- Connects with up to 2 locks connections.
- Product dimensions: 3.89 x 6.61 x 1.02 inches.

Description	Pack qty.	Catalog number
Mini video outdoor station, 1 pushbutton, with ID card reader		M21312P1-A
Mini video outdoor station, 2 pushbuttons, with ID card reader		M21312P2-A
Mini video outdoor station, 1 pushbutton		M21311P1-A
Mini video outdoor station, 2 pushbuttons		M21311P2-A

# Outdoor stations



## Video outdoor station, 1-row pushbutton for 1 or 2 calls

- The assembled product includes camera module (M251021C), audio module with 1/2 push button (M251022A-A) and 2-module cover frame (51022CF-A)
- Dustproof and waterproof to IP54.
- Tamper-proof to IK07.
- Different mode setting is possible for pushbutton, such as 1 call or 2 calls in one row.
- Surface mounting (41022F and 51022RH needed) and flush mounting (41022F needed).
- Product dimensions: 7.91 x 4.92 x 1.93 inches.

Description	Pack qty.	Catalog number
Video outdoor station, 1/2 pushbutton, aluminum	1/19	M21351P1-A



## Video keyboard outdoor station with speech synthesis

- The assembled product includes camera module (M251021C), audio module with speech synthesis (M251024A-A), keypad module (M251021K-A) and display module (M251021CR or M251022CR).
- Dust and waterproof to IP54.
- Tamper-proof to IK07.
- Built-in card reader in display module, supports ID (125KHZ) card (M21351K-A) and IC (13.56 MHZ) card (M21352K-A).
- Surface (41024F and 51024RH required) and flush (41024F required)
- Product dimensions: 13.66 x 4.92 x 1.93 inches.

Description	Pack qty.	Catalog number
Video outdoor station with keypad, with ID card reader	1/12	M21351K-A
Video outdoor station with keypad, with IC card reader	1/12	M21352K-A

## Module



## Camera module

- Video color camera with large detection angle (H 86°, V 67°, D 104° ) and manually adjustable by +- 15 degree horizontally and vertically.
- Built-in infrared lighting ensures clear image.
- Anti-fog design with built-in heater keeps the lens free of condensation.
- Connects with one additional analog camera for surveillance via the video indoor station.
- Product dimensions: 2.83 x 3.82 x 1.61 inches.

Description	Pack qty.	Catalog number
Camera module	1/12/12	M251021C



(Only for Aluminum)

## Audio module, no button

- Audio module is required for any audio or video outdoor station composition.
- 3 LEDs for status indications: call established/system busy, communication possible and door unlocked
- One output provides power output for electric locks
- Additional terminal for second lock is available
- Adjustable volume and lock release time
- No button.
- Integrated optic sensor for day and night mode.
- Product dimensions: 2.83 x 3.82 x 1.50 inches.

Description	Pack qty.	Catalog number
Audio module, aluminum	1/12/12	M251021A-A
Audio module, coated white	1/12/12	M251021A-W





(Only for Aluminum)

#### Audio module, 1 row pushbutton for 1 or 2 calls

- Audio module is required for any audio or video outdoor station composition.
- 3 LED indicators for operation status indications: call established/system busy, communication possible and door unlocked.
- One lock can be directly connected without independent power supply for the lock.
- Additional terminal for second lock is available.
- Lock release time and speaker volume are adjustable.
- 1 row of pushbutton.
- 1 pushbutton can be configured to call one or two addresses, call guard unit or switch on light.
- Integrated optic sensor for day and night mode.
- Product dimension: 2.83 x 3.82 x 1.50 inches.

Description	Pack qty.	Catalog number
Audio module, 1 row pushbutton, aluminum	1/12/12	M251022A-A
Audio module, 1 row pushbutton, coated white	1/12/12	M251022A-W



(Only for Aluminum)

#### Audio module, 2 row pushbuttons for 2 or 4 calls

- Audio module is required for any audio or video outdoor station composition.
- 3 LED indicators for operation status indications: call established/system busy, communication possible and door unlocked.
- One lock can be directly connected without independent power supply for the lock.
- Additional terminal for second lock is available.
- Lock release time and speaker volume are adjustable.
- 2 rows of pushbuttons.
- Different mode setting is possible such as 1 call or 2 calls in one row, call guard or switching light for the first or second button.
- Integrated optic sensor for day and night modes.
- Product dimensions: 2.83 x 3.82 x 1.50 inches.

Description	Pack qty.	Catalog number
Audio module, 2 rows pushbuttons, aluminum	1/12/12	M251023A-A
Audio module, 2 rows pushbuttons, coated white	1/12/12	M251023A-W



(Only for Aluminum)

#### Audio module, no button, with speech synthesis

- Audio module is required for any audio or video outdoor station composition.
- 3 LED indicators for status indications: call established/system busy, communication possible, door unlocked.
- One output provides power output for electric locks.
- Additional terminal for second lock is available.
- Adjustable volume and lock release time.
- No button, with speech synthesis for status feedback.
- Integrated optic sensor for day and night modes.
- Product dimensions: 2.83 x 3.82 x 1.50 inches.

Description	Pack qty.	Catalog number
Audio module with speech synthesis, aluminum	1/12/12	M251024A-A
Audio module with speech synthesis, coated white	1/12/12	M251024A-W

# Outdoor stations



## Pushbutton module, 3 rows for 3 or 6 calls

- Nameplate is removable by tool without disassembling the panel.
- Backlight ensures clear visibility at night.
- 3 rows can be set for 3 or 6 calls.
- Product dimensions: 2.83 x 3.82 x 0.98 inches.

Description	Pack qty.	Catalog number
3/6 pushbutton module	1/10/8	M251021P3
1/3 height cover for 3/6 pushbutton module		51021P3



## Pushbutton module, 4 rows for 4 or 8 calls

- Nameplate is extractable by tool without disassembling the panel.
- Backlight ensures clear visibility at night.
- 4 rows can be set for 4 or 8 calls.
- Product dimensions: 2.83 x 3.82 x 0.98 inches.

Description	Pack qty.	Catalog number
4/8 pushbutton module	1/10/8	M251021P4
1/4 height cover for 4/8 pushbutton module and audio module with button		51021P4



## Keypad module, letters A-Z

- Inputting device for keypad outdoor station.
- Letters from A-Z.
- Scroll up and down for residents' names or input letters of their name (display module must be accompanied, sorting is progressive upon inputting next letter of name).
- Names or call code can be downloaded from PC though USB cable or can be edited from the keyboard.
- Up to 3,000 names can be saved in the memory.
- A public password and up to 6, 000 customized passwords are allowed.
- If wrong password is repeatedly entered, the keypad will lock.
- 3 to 8 digits passwords.
- 1 to 6 digits calling codes.
- Call guard unit is also available.
- Backlight ensures clear visibility at night.
- Product dimensions: 2.83 x 3.82 x 1.22 inches.

Description	Pack qty.	Catalog number
Keypad module, letters A-Z, aluminum	1/10/8	M251021K-A
Keypad module, letters A-Z, white	1/10/8	M251021K-W
Keypad module, letters A-Z, stainless steel finish	1/10/8	M251021K-S



## Display module with card reader

- Large screen ensures customized message, code, and legible names.
- Withstands up to -40° F.
- Wiegand output is available for connection to third party devices.
- Available with integrated ID (125 KHz) or IC (13.6MHz) card reader.
- Up to 3, 000 different cards can be registered.
- Audio feedback indicating card reader status.
- Product dimensions: 2.83 x 3.82 x 1.22 inches.

Description	Pack qty.	Catalog number
Display module with ID card reader	1/10/8	M251021CR
Display module with IC card reader	1/10/8	M251022CR



### Nameplate module

- Used to hold the address of the building or the resident directory for keypad outdoor station, or simply to fill the module within the cover frame.
- Backlight ensures clear visibility at night.
- Product dimensions: 2.83 x 3.82 x 0.94 inches.

Description	Pack qty.	Catalog number
Directory nameplate module	1/10/8	51021DN



### Pushbutton module, one round button

- 1 round pushbutton with even backlight ensures legible nameplate at night.
- Option with built-in NFC and IC (13.56 MHz) card reader available.
- Screwless mounting module compatible for stainless steel and aluminum outdoor station.
- Supporting software ensures high quality nameplate printing.

Description	Pack qty.	Catalog number
Pushbutton module, 1 pushbutton	1/10/8	51011P1
Pushbutton module with NFC/IC function, 1 pushbutton	1/10/8	51012P1



### Pushbutton module, two round pushbuttons

- 2 round pushbutton with even backlight ensures legible nameplate at night.
- Option with built-in NFC and IC (13.56 MHz) card reader available.
- Supporting software ensures high quality nameplate printing.

Description	Pack qty.	Catalog number
Pushbutton module, 2 pushbuttons	1/10/8	51011P2
Pushbutton module with NFC/IC function, 2 pushbuttons	1/10/8	51012P2



### Pushbutton module, three round pushbuttons

- 3 roundpush button with even backlight ensures legible nameplate at night.
- Option with built-in NFC and IC (13.56 MHz) card reader available.
- Supporting software ensures high quality nameplate printing.

Description	Pack qty.	Catalog number
Pushbutton module, 3 pushbuttons	1/10/8	51011P3
Pushbutton module with NFC/IC function, 3 pushbuttons	1/10/8	51012P3



### Camera extension unit

- For integration into custom designed outdoor stations.
- Extends audio integration unit (83110-500) assembly with video function.
- Video camera with automatic day/night switchover and infrared LEDs to illuminate the night shots.
- Anti-fog design to keep lens free from condensation.
- Wide viewing angle: 86° vertical and 67° horizontal.
- Product dimensions: 2.44 x 3.86 x 1.38 inches.

Description	Pack qty.	Catalog number
Camera extension unit	1/10/8	83501-101-500



### Audio integration unit

- For integration into custom designed outdoor stations.
- Makes audio communication possible.
- Built-in relay for operating the door opener.
- 8 inputs
- Adjustable volume.
- With interface for the connection of the camera extension unit (83501-101-500).
- Product dimensions: 2.68 X 4.96 X 1.22 inches.

Description	Pack qty.	Catalog number
Audio integration unit	1/10/8	83110-500



# Outdoor stations



## Extension unit

- Extends the built-in audio module assembly by a further 12 binary inputs.
- For the integration into other manufacturers' mailboxes and doorbell systems of different manufacturers.
- With interface for the connection of additional built-in keypad extensions.
- The built-in audio module can be extended to a maximum of 99 inputs for doorbell push-switches with the aid of the built-in keypad extension.
- Product dimensions: 2.68 x 1.97 x 0.94 inches.

Description	Pack qty.	Catalog number
Extension unit	1/10/8	83111-500



## Cover frame, size 1/1

- The invisible screw design with provision of double columns is aesthetically pleasing.
- The tool to remove the end strip is also included in the package.
- Size 1/1, 5.04 x 4.92 x 0.75 inches.

Description	Pack qty.	Catalog number
Cover frame, 1-module, size 1/1, aluminum	1/10/8	51021CF-A
Cover frame, 1-module, size 1/1, coated white	1/10/8	51021CF-W



## Cover frame, size 1/2

- The invisible screw design with provision of double columns is aesthetically pleasing.
- The tool to remove the end strip is also included in the package.
- Size 1/2, 7.91 x 4.92 x 0.75 inches.

Description	Pack qty.	Catalog number
Cover frame, 2-module, size 1/2, aluminum	1/34	51022CF-A
Cover frame, 2-module, size 1/2, coated white	1/34	51022CF-W



## Cover frame, size 1/3

- The invisible screw design with provision of double columns is aesthetically pleasing.
- The tool to remove the end strip is also included in the package.
- Size 1/3, 10.79 x 4.92 x 0.75 inches.

Description	Pack qty.	Catalog number
Cover frame, 3-module, size 1/3, aluminum	1/22	51023CF-A
Cover frame, 3-module, size 1/3, coated white	1/22	51023CF-W



## Cover frame, size 1/4

- The invisible screw design with provision of double columns is aesthetically pleasing.
- The tool to remove the end strip is also included in the package.
- Size 1/4, 13.66 x 4.92 x 0.75 inches.

Description	Pack qty.	Catalog number
Cover frame, 4-module, size 1/4, aluminum	1/22	51024CF-A
Cover frame, 4-module, size 1/4, coated white	1/22	51024CF-W



## Cover frame, size 1/5

- The invisible screw design with provision of double columns is aesthetically pleasing.
- The tool to remove the end strip is also included in the package.
- Size 1/5, 16.54 x 4.92 x 0.75 inches.

Description	Pack qty.	Catalog number
Cover frame, 5-module, size 1/5, aluminum	1/22	51028CF-A



#### Cover frame, size 2/3

- The invisible screw design with provision of double columns is aesthetically pleasing.
- The tool to remove the end strip is also included in the package.
- Size 2/3, 10.79 x 9.06 x 0.75 inches.

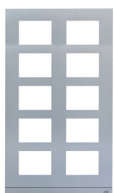
Description	Pack qty.	Catalog number
Cover frame, 6-module, size 2/3, aluminum	1/11	51025CF-W
Cover frame, 6-module, size 2/3, coated white	1/11	51025CF-W



#### Cover frame, size 2/4

- The invisible screw design with provision of double columns is aesthetically pleasing.
- The tool to remove the end strip is also included in the package.
- Size 2/3, 13.66 x 9.06 x 0.75 inches.

Description	Pack qty.	Catalog number
Cover frame, 8-module, size 2/4, aluminum	1/11	51026CF-A
Cover frame, 8-module, size 2/4, coated white	1/11	51026CF-W



#### Cover frame, size 2/5

- The invisible screw design with provision of double columns is aesthetically pleasing.
- The tool to remove the end strip is also included in the package.
- Size 2/5, 16.54 x 9.06 x 0.75 inches.

Description	Pack qty.	Catalog number
Cover frame, 10-module, size 2/5, aluminum	1/11	51029CF-A



#### End strip

- End strip for outdoor station cover frame.
- 2 types available, one for 4.9 inches wide outdoor station (size 1/X, 4.92 x 0.75 x 0.04 inches), the other for 9 inches wide outdoor station (size 2/X, 9.06 x 0.75 x 0.59 inches).

Description	Pack qty.	Catalog number
End strip, size 1/x, aluminum	1/36	51021EP-A
End strip, size 2/x, aluminum	1/20	51022EP-A
End strip, size 1/x, white	1/36	51021EP-W
End strip, size 2/x, white	1/20	51022EP-W



#### Flush mounted box, size 1/1

- Anodized aluminum rain hood necessary for surface mounting of outdoor stations. (Requires matching flush mounted box)
- The product is packed with accessories to ensure quality installation.
- 4.96 x 4.88 x 1.81 inches.

Description	Pack qty.	Catalog number
Flush-mounted box, 1-module, size 1/1	1/19	41021F



#### Flush mounted box, size 1/2

- Anodized aluminum rain hood necessary for surface mounting of outdoor stations. (Requires matching flush mounted box)
- The product is packed with accessories to ensure quality installation.
- 7.83 x 4.88 x 1.81 inches.

Description	Pack qty.	Catalog number
Flush-mounted box, 2-module, size 1/2	1/19	41022F

# Outdoor stations



## Flush mounted box, size 1/3

- The anodized aluminum flush mounting box.
- Fitted with knockout holes for cabling.
- The product is packed with accessories to ensure quality installation.
- 10.71 x 4.88 x 1.81 inches.

Description	Pack qty.	Catalog number
Flush-mounted box, 3-module, size 1/3	1/12	41023F



## Flush mounted box, size 1/4

- The anodized aluminum flush mounting box.
- Fitted with knockout holes for cabling.
- The product is packed with accessories to ensure quality installation.
- 13.58 x 4.88 x 1.81 inches.

Description	Pack qty.	Catalog number
Flush-mounted box, 4-module, size 1/4	1/12	41024F



## Flush mounted box, size 1/5

- The anodized aluminum flush mounting box.
- Fitted with knockout holes for cabling.
- The product is packed with accessories to ensure quality installation.
- 16.46 x 4.88 x 1.81 inches

Description	Pack qty.	Catalog number
Flush-mounted box, 5-module, size 1/5	1/6	41028F



## Flush mounted box, size 2/3

- The anodized aluminum flush mounting box.
- Fitted with knockout holes for cabling.
- The product is packed with accessories to ensure quality installation.
- 2/3, 10.71 x 8.98 X 1.85 inches.

Description	Pack qty.	Catalog number
Flush-mounted box, 6-module, size 2/3	1/6	41025F



## Flush mounted box, size 2/4

- The anodized aluminum flush mounting box.
- Fitted with knockout holes for cabling.
- The product is packed with accessories to ensure quality installation.
- 13.58 x 8.98 x 1.85 inches.

Description	Pack qty.	Catalog number
Flush-mounted box, 8-module, size 2/4	1/6	41026F



## Flush mounted box, size 2/5

- The anodized aluminum flush mounting box.
- Fitted with knockout holes for cabling.
- The product is packed with accessories to ensure quality installation.
- Size 2/5, 16.46 x 8.98 x 1.85 inches.

Description	Pack qty.	Catalog number
Flush-mounted box, 10-module, size 2/5	1/6	41029F



### Joining fixture

- When more than one flush mounted box (size 1/4, 41024F) needs to be connected.

Description	Pack qty.	Catalog number
Joining fixture for multi- flush mounted boxes connection		51021J



### Cavity wall set

- For cavity and hollow wall mounting of the flush-mounted wall boxes.

Description	Pack qty.	Catalog number
Cavity wall set for outdoor station and 4.3" video handsfree	1/18	51021CS



### Rain hood, size 1/1

- Anodized aluminum rain hood necessary for surface mounting of outdoor stations. (Requires matching flush mounted box)
- Size 1/1, 5.04 x 5.16 x 2.76 inches.

Description	Pack qty.	Catalog number
Rain hood, 1-module, size 1/1	1/14	51021RH



### Rain hood, size 1/2

- Anodized aluminum rain hood necessary for surface mounting of outdoor stations. (Requires matching flush mounted box)
- Size 1/2, 7.91 x 5.16 x 2.76 inches.

Description	Pack qty.	Catalog number
Rain hood, 2-module, size 1/2	1/14	51022RH



### Rain hood, size 1/3

- Anodized aluminum rain hood necessary for surface mounting of outdoor stations. (Requires matching flush mounted box)
- Size 1/3, 10.79 x 5.16 x 2.76 inches.

Description	Pack qty.	Catalog number
Rain hood, 3-module, size 1/3	1/8	51023RH



### Rain hood, size 1/4

- Anodized aluminum rain hood necessary for surface mounting of outdoor stations. (Requires matching flush mounted box)
- Size 1/4, 13.66 x 5.16 x 2.76 inches.

Description	Pack qty.	Catalog number
Rain hood, 4-module, size 1/4	1/8	51024RH



### Rain hood, size 1/5

- Anodized aluminum rain hood necessary for surface mounting of outdoor stations. (Requires matching flush mounted box)
- Size 1/5, 16.54 x 5.16 x 2.76 inches.

Description	Pack qty.	Catalog number
Rain hood, 5-module, size 1/5	1/8	51028RH



### Rain hood, size 2/3

- Anodized aluminum rain hood necessary for surface mounting of outdoor stations. (Requires matching flush mounted box)
- Size 2/3, 10.79 x 9.33 x 2.76 inches.

Description	Pack qty.	Catalog number
Rain hood, 6-module, size 2/3	1/4	51025RH



# Outdoor stations



## Rain hood, size 2/4

- Anodized aluminum rain hood necessary for surface mounting of outdoor stations. (Requires matching flush mounted box)
- Size 2/4, 13.66 x 9.33 x 2.76 inches.

Description	Pack qty.	Catalog number
Rain hood, 8-module, size 2/4	1/4	51026RH



## Rain hood, size 3/4

- Anodized aluminum rain hood necessary for surface mounting of outdoor stations. (Requires matching flush mounted box)
- Size 3/4, 13.66 x 14.88 x 2.76 inches.

Description	Pack qty.	Catalog number
Rain hood, 12-module, size 3/4	1/2	51027RH



## Rain hood, size 2/5

- Anodized aluminum rain hood necessary for surface mounting of outdoor stations. (Requires matching flush mounted box)
- Size 2/5, 16.54 x 14.88 x 2.76 inches.

Description	Pack qty.	Catalog number
Rain hood, 10-module, size 2/5	1/4	51029RH



## Labelling sheet, A4

- Quality labelling sheet for nameplate.
- Easy to print and cut.
- Waterproof.
- A4 (8.5 X 11 inches) paper size

Description	Pack qty.	Catalog number
Labelling sheet for nameplate, A4		51021L
Labelling sheet for 1/3 height, A4		51022L
Labelling sheet for 1/4 height, A4		51023L
Labelling sheet for round pushbutton module, A4		51024L
Labing A4 sheet for mini OS		50125L



## Mounting tool

- Spare part for the outdoor station, stainless steel.

Description	Pack qty.	Catalog number
Mounting tool, stainless steel		51021MT



## Label holder for round pushbutton module

- Label holder for the round pushbutton module, with stamped labelling.
- Contains one support frame and two extension support frames.

Description	Pack qty.	Catalog number
Label holder for round pushbutton		83161-500



## New proximity key fob

- 7.91 x 5.16 x 2.76 inches.

Description	Pack qty.	Catalog number
New proximity key fob, ID card, white		51023F-W
New proximity key fob, ID card, black		51023F-B
New proximity key fob, IC card, white		51024F-W
New proximity key fob, IC card, black		51024F-B



### Proximity stickers

– 0.98 x 0.98 x 0.02 inches.

Description	Pack qty.	Catalog number
New ID sticker		51021S
New IC sticker		51022S



### Proximity badges

– 1.57 x 1.22 x 0.20 inches.

Description	Pack qty.	Catalog number
Proximity badge, IC card		83173-500
Proximity badge, ID card		51021B

# Quick composition guide for modular pushbutton outdoor station

## (3-row or 4-row pushbutton)

Welcome provides a wide range of outdoor stations with pushbuttons by the combination of the modules, covers and boxes.

By using double columns in the pushbutton outdoor station, the capacity can be doubled. The setting is made by the audio modules. We refer to the pushbutton status as "single row" or "double row." 3-row and 4-row pushbutton are optional for application.

To configure a pushbutton outdoor station, audio module (with no pushbutton, with 1-row or 2-row pushbutton), pushbutton module (3-row or 4-row pushbutton), cover frame and flush mounted boxes are required. For surface mounted units, a rain hood is also needed.

There is a quick table for pushbutton outdoor station on pages 10-11. Please follow the guide below and refer to the table to choose the items needed for the desired pushbutton outdoor station.

### Step 1: Audio or video?

Refer to page 10 for audio pushbutton outdoor station and page 11 for video pushbutton outdoor station.

### Step 2: 3-row or 4-row pushbutton?

Refer to the 3-row or 4-row pushbutton table for different pushbutton applications.

\* While it is technically possible to combine different audio module and pushbutton module configurations, note that the pushbuttons will not be aligned. Audio and pushbutton modules of equal numbers are recommended.

### Step 3: How many calls are needed?

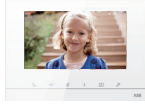
Determine whether single row or double row pushbutton is needed, then turn to the button ranges to quickly locate the possible configuration.

\* In case light and call guard functions are required for the outdoor station, then the total buttons should be the combination of the number of residences and functions.

### Step 4: Choose the right composition by balancing cost and aesthetics

\* Because of the many options for modules, number of rows and nameplates in the Welcome pushbutton family, consideration of cost and aesthetics can be helpful in decision making.

# Indoor stations



## 7" all touch video hands-free indoor station

- Large 7" (178mm) color display with intuitive touch control.
- 6 touch film buttons for communication, unlocking, mute, programmable button (can be set as intercom, call guard unit, etc.), surveillance and setting.
- During resident's absence, voice message of the resident will be played automatically in case of door calls, and three photos of the visitor will be automatically stored.
- The number of pictures that can be stored is decided by the capacity of the SD card (not provided).
- Call transfer among different residences and guard unit is available.
- Doctor function for automatic unlock.
- 5 ringtones for different call sources, i.e. from default outdoor station, secondary outdoor station, door bell, intercom or guard unit.
- Send SOS alarm to guard unit in emergency.
- Surface mounting and desktop mounting (desktop bracket 42311D is required).
- A detailed user manual can be downloaded through scanning the QR code on the screen.
- Product dimensions: 6.10 x 8.58 x 1.14 inches.

Description	Pack qty.	Catalog number
7" hands-free video indoor station, white	1/16	M22331-W
7" hands-free video indoor station, black	1/16	M22331-B



## 4.3" video hands-free indoor station

- 4.3" color display with on screen display.
- 6 touch film buttons for communication unlocking, mute, programmable button (can be set as intercom, call guard unit, etc.), surveillance and setting.
- 2 photos of the visitor will be automatically stored in the picture memory for door calls during resident's absence.
- Holds up-to 50 photos
- Call transfer among different residences and guard unit is available.
- Doctor function for automatic unlock.
- 5 ringtones for different call sources, i.e. from default outdoor station, secondary outdoor station, doorbell, intercom or guard unit.
- Broadcast by simply holding and pressing the communication button.
- Surface, flush (flush-mounted box 42311F is required, and desktop mounted (desktop bracket 42311D is required).
- The detailed user manual can be downloaded through scanning the QR code on the screen.
- Product dimensions: 5.39 x 6.10 x 0.94 inches

Description	Pack qty.	Catalog number
4.3" video hands-free indoor station, white	1/28	M22311-W
4.3" video hands-free indoor station, black	1/28	M22311-B



# Indoor stations



## 4.3" video hands-free indoor station with induction loop

- Electromagnetic signals will be emitted by a special inductive loop for auditory indication of any incoming calls. Functional for users with hearing aids.
- 4.3" color display with on screen display.
- 6 touch film buttons for communication, unlocking, mute, programmable button (can be set as intercom, call guard unit, etc.), surveillance and setting.
- 2 photos of the visitor will be automatically stored in memory for door calls during resident's absence.
- Holds up to 50 photos.
- Call transfer among different residences and guard unit is available.
- Doctor function for automatic unlock.
- 5 ringtones for different call sources, i.e. from default outdoor station, secondary outdoor station, door bell, intercom or guard unit.
- Broadcast by simply pressing and holding the communication button.
- Surface, flush (flush-mounted box 42311F is required, and desktop mounted (desktop bracket 42311D is required).
- The detailed user manual can be downloaded through scanning the QR code on the screen.
- Product dimensions: 5.39 x 6.10 x 0.94 inches.

Description	Pack qty.	Catalog number
4.3" hands-free video indoor station, induction loop, white	1/28	M22313-W



## 4.3" video handset indoor station, color display

- Slim indoor station with handset (depth of 45 inches).
- 4.3" color display with on screen display.
- 6 touch film buttons for communication, unlocking, mute, programmable button (can be set as intercom, call guard unit, etc.), surveillance and setting.
- 2 photos of the visitor will be automatically stored in memory for door calls during resident's absence.
- Holds up to 25 photos.
- Call transfer among different residences and guard unit is available.
- Doctor function for automatic unlock.
- 5 ringtones for different call sources, i.e. from default outdoor station, secondary outdoor station, door bell, intercom or guard unit.
- Surface and desktop (desktop bracket 42311D is required).
- The detailed user manual can be downloaded through scanning the QR code on the screen.
- Product dimensions: 5.67 x 7.80 x 1.77 inches.

Description	Pack qty.	Catalog number
4.3" handset color video indoor station, white	1/15	M22302-W



#### 4.3" video handset indoor station, color display with induction loop

- Electromagnetic signals will be emitted by a special inductive loop for auditory indication of any incoming calls. Function for users with hearing aids.
- Slim indoor station with handset (depth of 45 inches).
- 4.3" color display with on screen display.
- 6 touch film buttons for communication, unlocking, mute, programmable button (can be set as intercom, call guard unit, etc.), surveillance and setting.
- 2 photos of the visitor will be automatically stored in the memory for door calls during resident's absence.
- Holds up to 25 photos.
- Call transfer among different residences and guard unit is available.
- Doctor function for automatic unlock.
- 5 ringtones for different call sources, i.e. from default outdoor station, secondary outdoor station, door bell, intercom or guard unit.
- Surface and desktop (desktop bracket 42311D is required).
- The detailed user manual can be downloaded through scanning the QR code on the screen.
- Product dimensions: 5.67 x 7.80 x 1.77 inches.

Description	Pack qty.	Catalog number
4.3" handset color video indoor station with induction loop, white	1/15	M22303-W



#### Basic 4.3" video hands-free indoor station

- 4.3" color display with on screen display.
- 6 touch film buttons for communication unlocking, mute, programmable button (can be set as intercom, call guard unit, etc.), surveillance and setting.
- Holds up to 50 photos
- 5 ringtones for different call sources, i.e. from default outdoor station, secondary outdoor station, doorbell, intercom or guard unit. The ringtone can be fixed or cycled
- The detailed user manual can be downloaded through scanning the QR code on the screen.
- Surface and desktop (desktop bracket 42311D is required).
- Product dimensions: 16.06 X 5.28 X 0.90"

Description	Pack qty.	Catalog number
Basic 4.3" video hands-free indoor station, white	1/24	M22344-W



#### Audio handset indoor station, 3 buttons

- 1 pushbutton for unlock, and 2 additional programmable buttons for functions like intercom, door status check, second lock release or call security guard.
- 3 level volume adjuster on the side.
- 2 LEDs to indicate different working status.
- 5 ringtones for different call sources
- Activating and deactivating of automatic unlock can be achieved or accomplished by simply pressing the unlock button for 10 seconds.
- Surface mounted.
- Product dimensions: 7.80 x 3.19 x 1.69 inches.

Description	Pack qty.	Catalog number
Audio handset indoor station, 3 buttons, white	1/25	M22002-W

# Indoor stations



## Audio handset indoor station, 3 buttons with induction loop

- 1 pushbutton for unlock, and 2 additional programmable buttons for functions like intercom door status check, second lock release or even calling the security guard, etc.
- Max-mid-mute volume adjuster on the side.
- 2 LEDs to indicate different working status.
- 5 ringtones for different call sources, i.e. from default outdoor station, secondary outdoor station, doorbell, intercom or guard unit.
- Activating and deactivating of automatic unlock can be achieved or accomplished by simply pressing the unlock button for 10 seconds.
- Electromagnetic signals will be emitted by a special inductive loop to provide hearing assistance to hearing aid users.
- Surface mounted
- Product dimensions: 7.80 x 3.19 x 1.69 inches.

Description	Pack qty.	Catalog number
Audio handset indoor station, 3 buttons with induction loop, white	1/25	M22003-W



## Audio handset indoor station, 6 buttons

- 1 pushbutton for unlock, and 5 additional programmable buttons for functions like intercom door status check, second lock release or even calling the security guard, etc.
- Max-mid-mute volume adjuster on the side.
- 2 LEDs to indicate different working status.
- 5 ringtones for different call sources, i.e. from default outdoor station, secondary outdoor station, doorbell, intercom or guard unit.
- Activating and deactivating of automatic unlock can be achieved or accomplished by simply pressing the unlock button for 10 seconds.
- Surface mounted
- Product dimensions: 7.80 x 3.19 x 1.69 inches.

Description	Pack qty.	Catalog number
Audio handset indoor station, 6 buttons, white	1/25	M22001-W



## Audio hands-free indoor station, 4 buttons

- Light button can be customized as room-to-room intercom, call guard unit.
- Different bell tones for door-call and floor-call
- Choice of five different bell sounds
- Surface mounted.
- The ringtone can be fixed or cycled
- Floor-call function, a connected button functions as a floor-call button: all indoor stations with the same address trigger a floor call
- Dimensions: 6.87 x 3.19 x 0.82 inches.

Description	Pack qty.	Catalog number
Audio handsfree, white	1/26	83210 AP-624-500
Audio handsfree, black	1/26	83210 AP-681-500
Audio handsfree, silver	1/26	83210 AP-683-500

# Accessories



## Changeable front cover for 4.3" video hands-free indoor station

- For use with 4.3" video hands-free indoor stations.

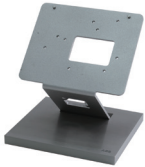
Description	Pack qty.	Catalog number
Front cover for 4.3" video hands-free, white	1/36	52311FC-W
Front cover for 4.3" video hands-free, silver	1/36	52311FC-S
Front cover for 4.3" video hands-free, black	1/36	52311FC-B
Front cover for 4.3" video hands-free, golden	1/36	52311FC-G
Front cover for 4.3" video hands-free, light blue	1/36	52311FC-L



## Changeable front cover for 4.3" video hands-free indoor station with induction loop

- For use with 4.3" video hands-free indoor stations with induction loop

Description	Pack qty.	Catalog number
Front cover for 4.3" video hands-free with induction loop, white	1/36	52313FC-W
Front cover for 4.3" video hands-free with induction loop, silver	1/36	52313FC-S
Front cover for 4.3" video hands-free with induction loop, black	1/36	52313FC-B
Front cover for 4.3" video hands-free with induction loop, golden	1/36	52313FC-G
Front cover for 4.3" video hands-free with induction loop, light blue	1/36	52313FC-L



## Desktop bracket

- Full metal design with brushed finish base
- Suitable for video indoor stations and guard unit.
- Product dimensions: 4.92 x 4.21 x 5.28 inches.

Description	Pack qty.	Catalog number
Metal desktop bracket	1/12	42311D



## Handset with induction loop

- Replacement handset for audio handset indoor station with induction loop and 4.3" video handset indoor station with induction loop.

Description	Pack qty.	Catalog number
Handset with induction loop (spare part)		52303HS-W



## Jumper

- Replacement jumper set used to set address, slave/master status, and terminating resistor in audio and video handset indoor stations.

Description	Pack qty.	Catalog number
Jumper set for audio handset indoor station		52001J
Jumper set for 4.3" video handset indoor station		52301J



## Cavity wall set

- For cavity wall mounting of the flush-mounted wall boxes.

Description	Pack qty.	Catalog number
Cavity wall set for outdoor station and 4.3" video handsfree	1/18	51021CS

# System devices



## System controller

- Manages the communication between the outdoor station and the indoor station.
- Two working modes : "all on" and "one on".
- Serves as auxiliary BUS power supply when connected to gateway M2302.
- 1 LED for normal working condition indication.
- Overheat, short-circuit and lightening protection.
- Product dimensions: 3.54 x 5.67 x 2.56 inches.

Description	Pack qty.	Catalog number
System controller, 1.2A output, MDRC 8U	1/10	M2300



## Mini system controller

- Manages the communications between the outdoor station and the indoor station.
- Two working modes: "all on" and "one on".
- Serves as auxiliary BUS power supply when connected to gateway in certain mode.
- 1 LED for normal working condition indication.
- Overheat, short-circuit and lightening protection.
- Product dimensions: 3.54 x 2.83 x 2.56 inches.

Description	Pack qty.	Catalog number
Mini system controller, 0.65A output, MDRC 4U	1/10	M2301



## Gateway

- Offers 5 different modes which can be set by dip switch: apartment gateway, floor gateway, building gateway, auxiliary BUS power supply interface and line amplifier.
- Product dimensions: 3.54 x 2.83 x 2.56 inches.

Description	Pack qty.	Catalog number
Gateway, MDRC 4U	1/10	M2302



## Video outdoor distributor

- Integrates input from two video outdoor stations.
- Product dimensions: 3.54 x 1.42 x 2.56 inches.

Description	Pack qty.	Catalog number
Video outdoor distributor, MDRC 2U	1/20	83325/2-500



## Guard unit

- 4.3" touch screen and 6 touch film buttons ensure the communication with calls from outdoor station, indoor station or other guard unit (if any).
- Can be manually or automatically set into intercept mode to increase security level for all users or only certain individuals.
- Surveillance can be done through the camera of outdoor stations or integrated analog camera.
- Missed calls and alarm messages stored in the memory can be reviewed.
- Can be surface mounted on the wall or desktop mounted (desktop bracket 42311D is needed).
- Product dimensions: 5.67 x 7.80 x 1.77 inches.

Description	Pack qty.	Catalog number
Guard Unit	1/15	M2303





### Video distributor

- Compact device supports 4-way outputs connected to different residences or different high-rise buildings.
- Flush-mounted into box or surface mounted through the center hole or DIN rail mounted via DIN adaptor (Catalog number 53001DR).
- Product dimensions: 1.77 x 1.77 x 1.02 inches.

Description	Pack qty.	Catalog number
Video distributor, FM	1/18	M2304



### Switch actuator

- Compact device has 3 working modes: extend door bell, door opener and time relay.
- Local pushbutton can be connected as control input.
- The switching duration of unlock or switching on lightings is adjustable.
- Flush-mounted or DIN rail mounted via DIN adaptor (Catalog number 53001DR).
- Product dimensions: 2.01 x 2.01 x 1.14 inches.

Description	Pack qty.	Catalog number
Switch actuator, FM	1/18	M2305



### BNC connector

- Used to connect the external camera to the camera interface or outdoor station's camera module.
- Mates with standard BNC plug.
- Product dimensions: 1.65 X 0.59 X 0.55 Inches.

Description	Pack qty.	Catalog number
BNC connector	10	55001BC



### Camera interface

- Supports up to 4 analog 3rd party cameras for one device.
- Supports camera connection to the existing outdoor station.
- Supports transfer of image from guard unit to an indoor station.
- Supports the integration of additional analog cameras for expanded viewing.
- Supports input and output of video signal of outdoor station to 3rd party VDR during the call, which can be viewed from the video indoor station.
- Supports installation surface and DIN rail (53001DR required) mounting installations.
- Product dimensions: 3.03 X 2.40 X 0.98 inches.

Description	Pack qty.	Catalog number
4-way analog camera interface	1/18	83327-500



### DIN rail adaptor

- One DIN rail adaptor fits: video distributor, switch actuator, and camera interface.
- Adjustable and consistent looking cover can be removed if needed.
- Product dimensions: 3.54 X 2.83 X 2.56 inches.

Description	Pack qty.	Catalog number
DIN rail adaptor	1/10	53001DR

# System devices



## IP Gateway

- Enables smart devices (iOS and Android) integration through ABB Welcome's app.
- Supports both WIFI and remote access under 3G/4G (Standard rates may apply).
- Enables the integration with ABB Comfort touch as indoor station.
- PC interface efficiently programs telephone gateway products.
- Supports to monitoring of multiple cameras with camera interface
- Supports communication with guard and intercom calls
- Supports to switch actuator control
- Supports to control two locks during the call
- Supports to make a SOS call in case of emergency
- Product dimensions: 3.54 X 7.09 X 2.56 inches.

Description	Pack qty.	Catalog number
IP Gateway	1/24	83342-500



## Telephone gateway

- PSTN Telephone integrated as audio indoor station.
- Unlock the door, switch the light, communication can be done through telephone.
- Allows any mobile device to be set as an extended indoor station.
- Efficient programming through PC when connected to an IP Gateway (83342-500).

Description	Pack qty.	Catalog number
Telephone gateway	1/10	83350-500



## Lift (elevator) control module

- Enhance security by authorizing access for residents and permitted visitors to designated floor(s) and restricting access to unauthorized visitors by disabling any floor button in the elevator.
- Efficient programming through PC by dedicated commissioning software.
- Each module supports up to 16 floors total.
- Up to 16 modules can be cascaded.

Description	Pack qty.	Catalog number
Lift control relay module	1/30	M2307
M adaptor (two functions: PC adaptor and lift control module)	1/10	M2306



(Available April 2017)

## 2-wire adaptor

- Supports integration of the PC management software to Welcome®
- The PC management software facilitates centralized management of residents' information like user names and card information, logs emergency calls and door unlocks, and is used to configure elevator modules. Visit [www.abb.com](http://www.abb.com) for more information.
- 2-wire adaptor dimensions: 3.54 X 7.09 X 2.56 inches.

Description	Pack qty.	Catalog number
2-wire adaptor, MDRC 10U	1/24	M2308

## Notes

# Contact us

## ABB

Electrification Products  
8155 T&B Boulevard  
Memphis, TN 38125  
[www.abb.com/door-entry-system-us](http://www.abb.com/door-entry-system-us)

Customer Service: 800-816-7809  
7:00 a.m. - 5:30 p.m., CST, Monday-Friday  
[elec\\_custserv@tnb.com](mailto:elec_custserv@tnb.com)  
Technical Support: 888-862-3289  
7:00 a.m. - 5:00 p.m., CST, Monday-Friday  
[techsupport@tnb.com](mailto:techsupport@tnb.com)

We reserve the right to make technical changes or modify the contents of this document without prior notice. With regard to purchase orders and/or contracts, the agreed particulars shall prevail. ABB does not accept any responsibility whatsoever for potential errors or possible lack of information in this document. We reserve all rights in this document and in the subject matter and illustrations contained therein. Any reproduction, disclosure to third parties or utilization of its contents – in whole or in parts – is forbidden without prior written consent of ABB.

© Copyright 2017 ABB.  
All Rights Reserved.

## Approvals and Compliances

