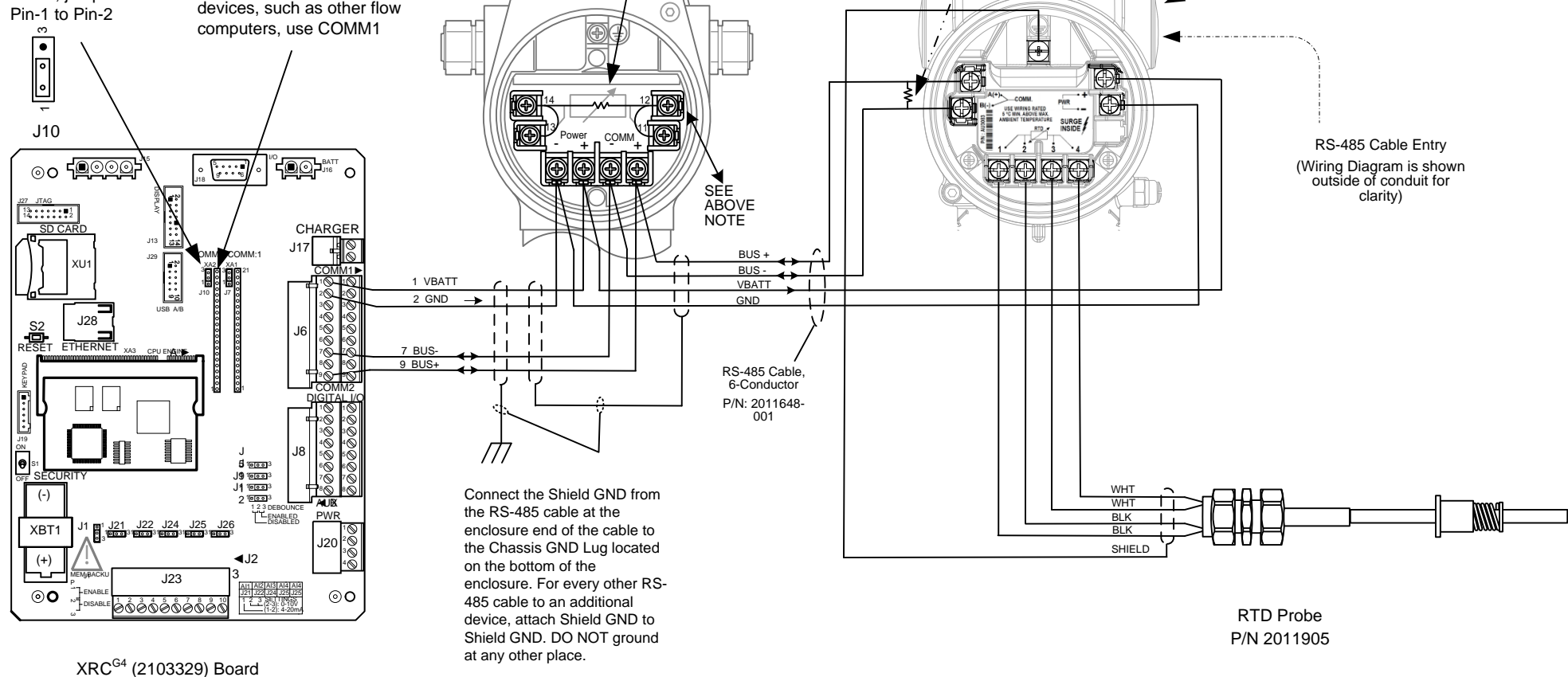



1. **WARNING:** This drawing does not illustrate the installation methods required for hazardous locations. Prior to any installation in a Classified Hazardous Location, verify installation methods by the Control Drawing referenced on the product's name tag and national and local codes.

**Note:** For RTD installation, remove jumpers from XMV terminals 11-12, 13-14 and the 178Ω resistor from terminals 12-14.

**120Ω – 250Ω Resistor**  
The last XMV on the buss should be terminated with this resistor jumpered across the COMM + and COMM – terminals (the 178Ω resistor discarded when adding the RTD is acceptable for this termination).



 <b>TOTALFLOW</b> Products	ACTION	DOC TYPE	TITLE	DWG NO.	REV	SHEET
	D35505	UD	XRC <sup>G4</sup> (2103329 BOARD) COMM2 (RS485) TO ABB 267/269CS & ABB 266J W/RTD	2105113	AB	1 OF 1