



JANUARY 2020

# ABB Field Information Manager

Field Information Manager (FIM) 2.1 – Introduction and Key features

Neil Shah, Product Manager – IA PCP



---

# Trends in Device Management Tools

- FDI is the latest Device Integration standard driving Digitalization & sensor to cloud connectivity
- Software tools must be easy to install, use & maintain
- Device Management tool enables Asset Optimization
- Flexible – from standalone in the field to integration into control systems, from Tablets to Laptops, PCs & Workstations

# Device Management tools

## Why ABB Field Information Manager ?

- One simple tool for all needs
  - It can be used in an Engineering station, in the Field, back of the panel or in maintenance workshop
  - Quick to start – installs on Windows tablets and workstations, scans, identifies & enables access to device within 3 mins
  - Connects to Online drivers repository – eliminates the trial & error search of Device drivers
- Efficient engineering
  - Enables easy and efficient bulk device configuration of HART and PROFIBUS devices from a central location, enabled via device connectivity through System 800xA
- Latest device management technology for your field devices
  - Leverages FDI technology, which combines the simplicity of EDD and information richness of DTM
  - supports PROFIBUS DP through Thorsis Ethernet Gateway for connecting to S800 IO and PROFIBUS Devices
  - supports both legacy DDs and new FDI packages; i.e. one tool for existing and new devices
  - Fleet management and Asset management opportunities enabled via Connectivity to ABB Ability™ through OPC UA

# ABB Field Information Manager

## What's new ?

### Improved User Interface

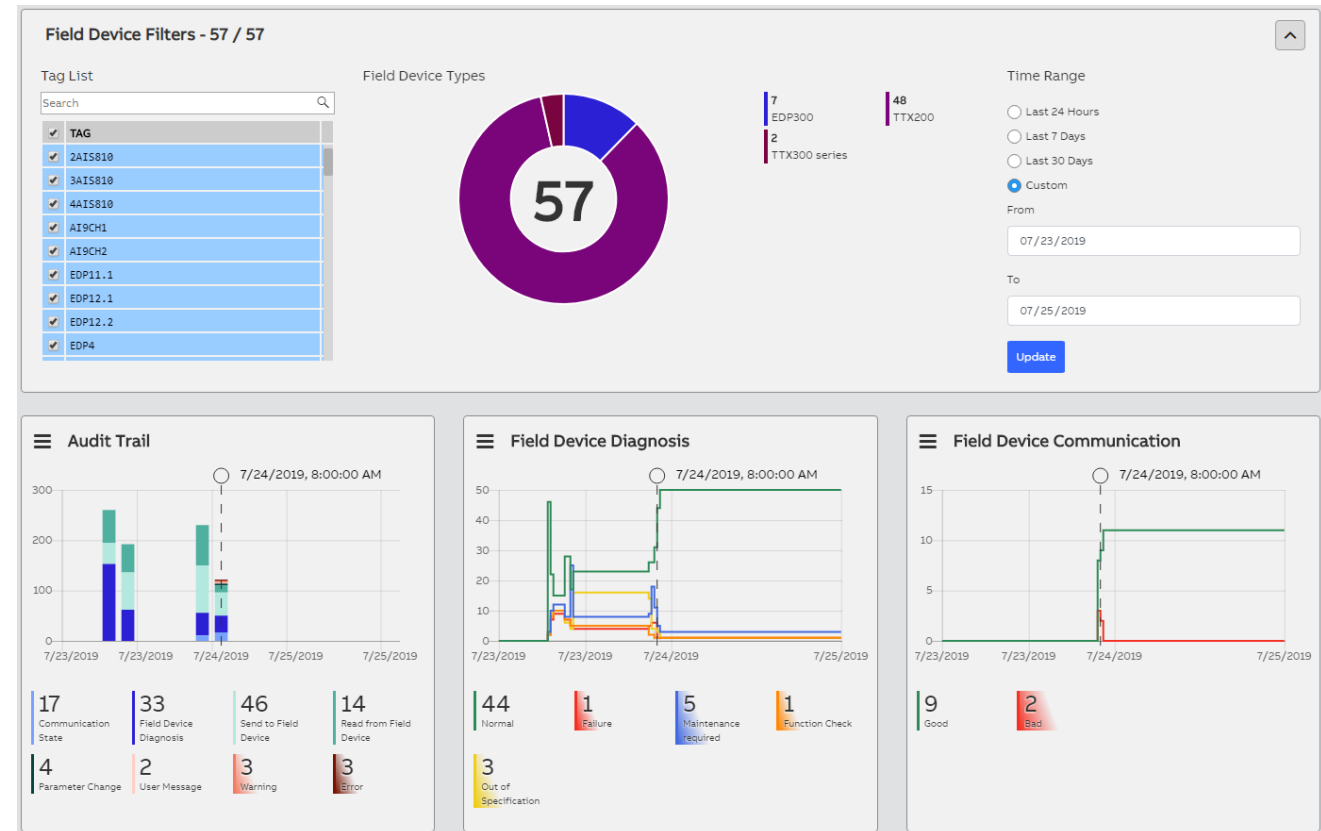
- Dashboard Overview about Device Health & Audit Trail information
- Compare view enabling device configuration comparison
- Field operator / technician notes as part of Audit Trail

### More Field Connectivity's

- Direct PROFINET Connectivity and Select I/O, S800 on Ethernet connectivity
- Direct Connectivity to S800 HART Devices independent of Control System
- ABB UMC local port access and highly optimized FDI Device Package
- Connect to PROFIBUS devices through PROFIBUS modem

### Empowering automatic updates

- Connection to ABB Online Driver cloud for driver updates
- Connection to FieldComm Group Driver cloud for 3rd party HART device drivers



# Field Information Manager

One Simple tool for all needs

## Flexible and simple architecture

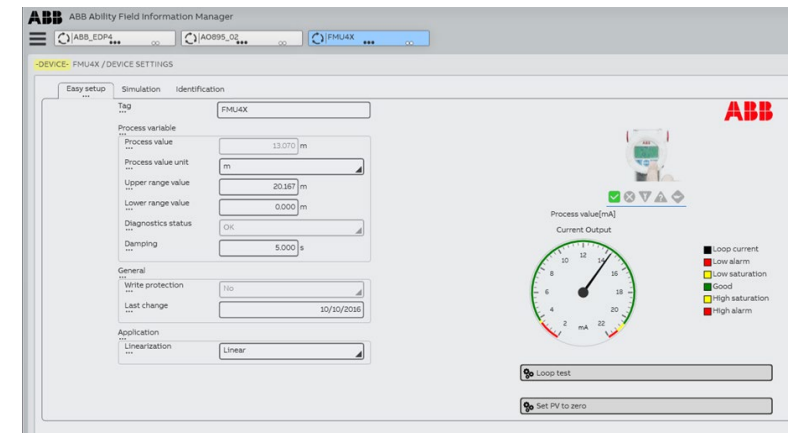
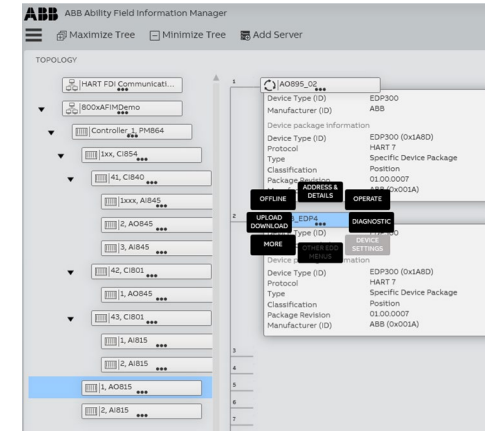
- It can be used in an Engineering station, in the Field, back of the panel or in maintenance workshop
- Quick to start – installs on Windows tablets and workstations, scans, identifies & enables access to device within 3 mins

## FIM is built on a high performance UI

- Same look and feel - The Device menu options can be accessed always in the same way, irrespective of the device make & model
- Native touch navigation or normal PC navigation (mouse, keyboard)

Connects to Online drivers repository – eliminates the trial & error search of Device drivers

- ABB Device Driver cloud
- Fieldcomm Group Device Driver cloud



# Field Information Manager

## Efficient engineering

### Device Bulk Engineering

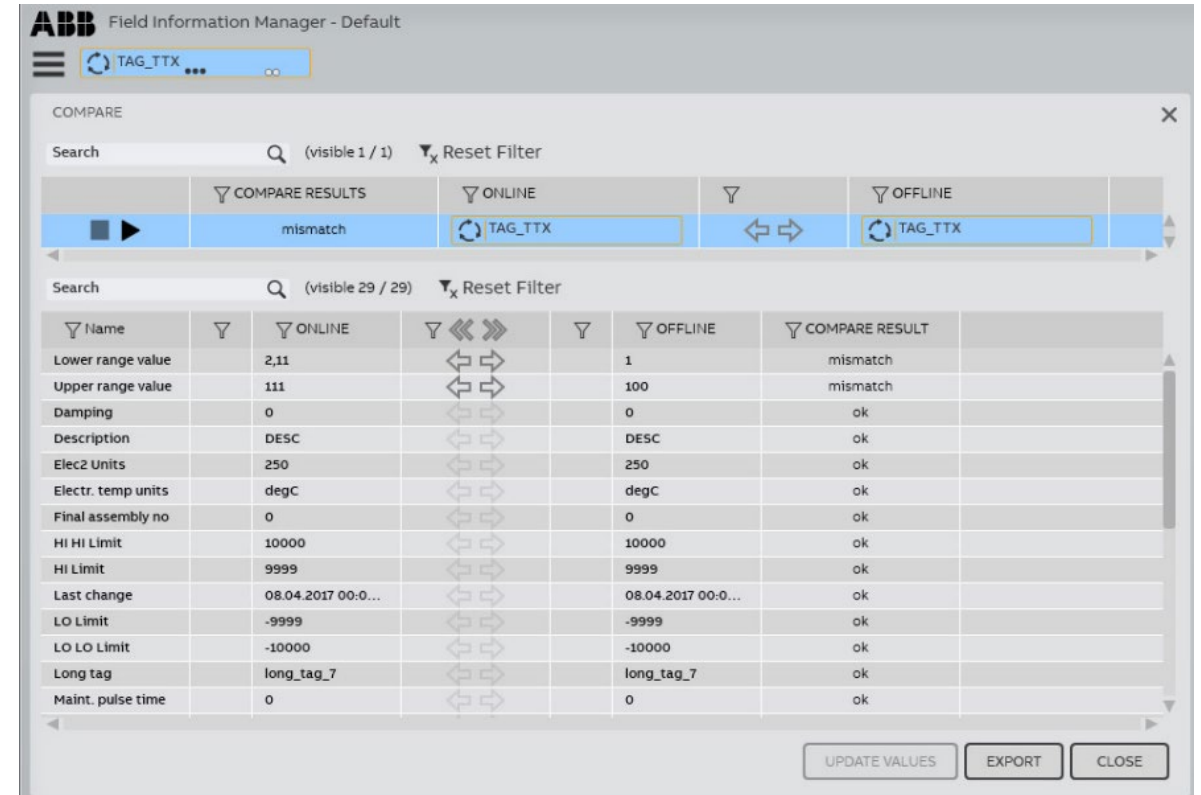
- Enables easy and efficient bulk device configuration of HART and PROFIBUS devices from a central location, enabled via device connectivity through System 800xA
- Supports templates with pre-configured parameters to be deployed to the field devices

### Zero configuration

- Automatically uploads the hardware structure from the underlying systems
- Scans & assigns the appropriate device driver

### Innovative UI enabling parallel engineering

- The UI supports multiple device views allowing the user to switch the view of the devices in a simple manner and manage multiple devices in a more efficient manner



# Field Information Manager

Latest device management technology for your field devices

Leverages FDI technology, which combines the simplicity of EDD and information richness of DTM

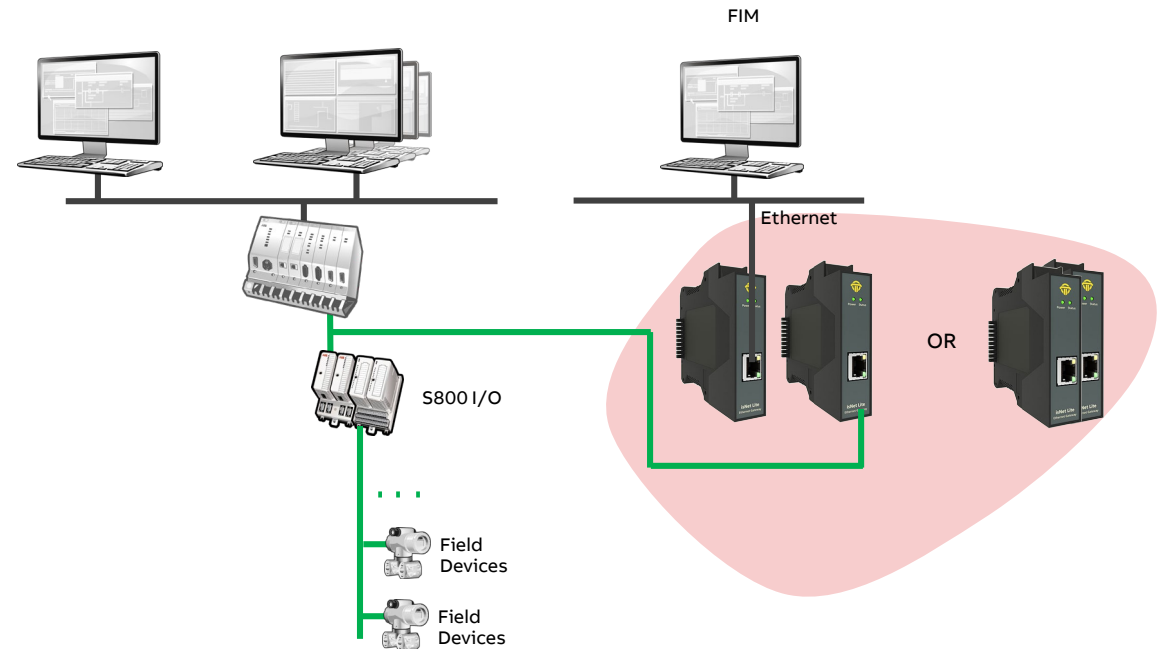
- Device Packages are not installed, but are just loaded in the machine
- FIM also supports UIP that enables graphic rich features like DTM
- FIM comes packed with Generic Device Packages that can be used with any HART device
- Additionally, FIM supports legacy HART DDs

Supporting Heritage and 3<sup>rd</sup> party systems

- supports PROFIBUS DP through Thorsis Ethernet Gateway for connecting to S800 IO and PROFIBUS Devices

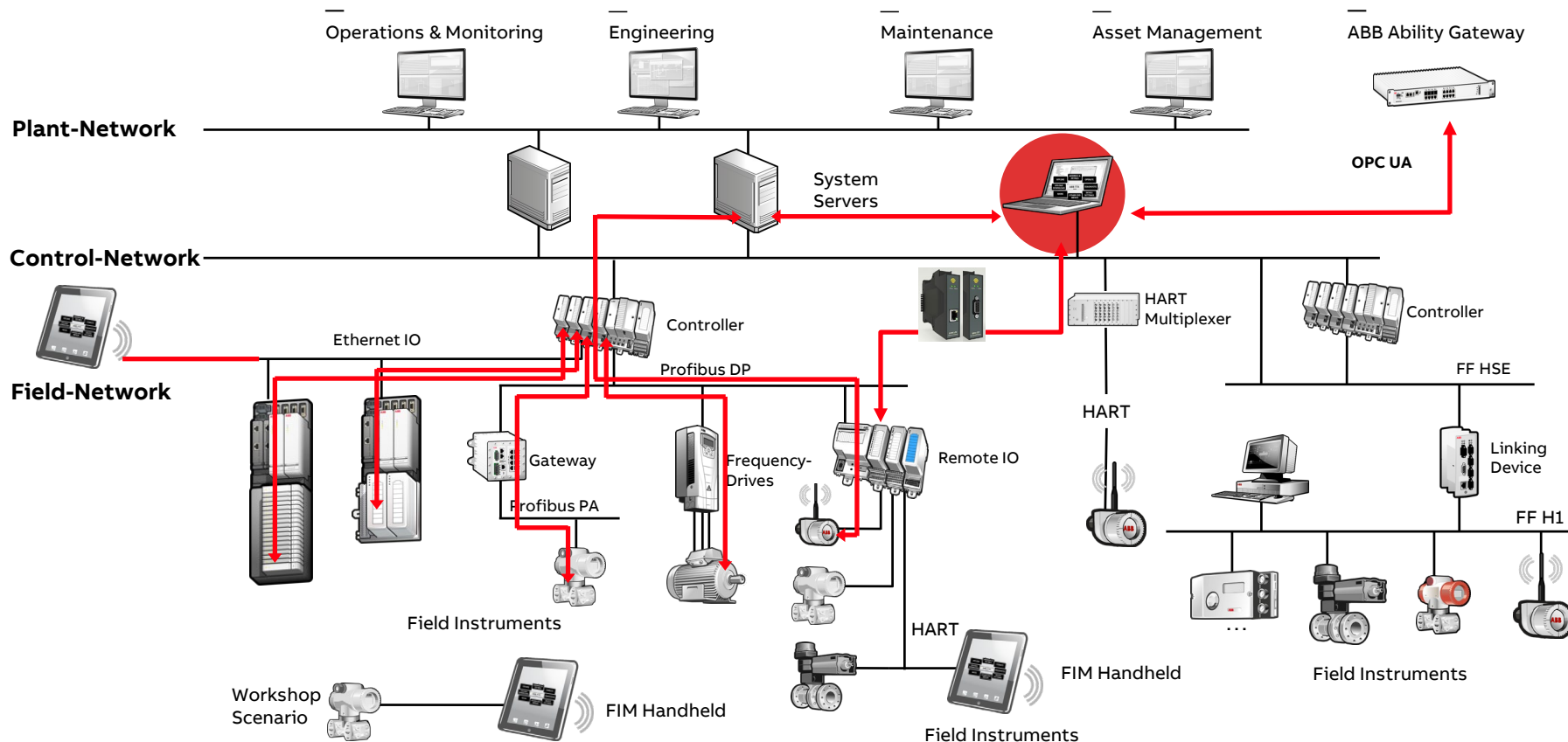
FIM comes with an OPC UA server that connects to ABB Ability™

- Fleet management - Sensor configuration & diagnostic data is available without any additional configuration effort
- Enabler for digital opportunities – Remote service, remote verification, fleet reporting, analysis of sensor/actuator diagnostics



# Field Information Manager (FIM)

## Architecture & functionalities



### Connectivities

- **Standalone**
- S800 Gateway support
- **800xA Integration**
- 800xA S800
- UMC support
- 800xA Select I/O
- 800xA S800 on Ethernet
- **Cloud Integration**
- ABB Ability™
- **FIM Future**
- Efficient engineering
- S+ Connectivity

# FIM 2.1

## Free trial, demonstration & training

FIM trial version is available for free download at our webpage

- Any user can register, download the tool & use it with a HART modem

Features of trial edition (Device Window Edition)

- Only 1 device tag
- Can be used with HART, PROFIBUS and PROFINET connectivities, but not with System 800xA

Training material

- FAQ section on our [learning center](#)
- Functionality specific short [videos](#)

FIM trial software download here:

<https://new.abb.com/control-systems/fieldbus-solutions/fim/free-trial-software>

CLICK HERE FOR YOUR FREE  
SOFTWARE DOWNLOAD OF ABB  
FIELD INFORMATION MANAGER.

[www.abb.com/fieldinfo](http://www.abb.com/fieldinfo)

**ABB**