
QUICK START GUIDE

Activation of Web Visualization CP600-eCo and CP600-Pro

Contents

Introduction.....	3
Safety guide.....	4
1 Before you start	5
2 Hardware connection	5
3 Compatibility	5
4 Activate Chromium browser as web visualization on a brand new HMI	6
5 Activate Chromium web browser in HMI runtime	7

Introduction

The quick start guide describes the steps to activate the Chromium Browser as Web Visualization

This document is applicable to below models:

CP604(-B)	Control panel, TFT graphical display, touchscreen, 4.3", 480 x 272 pixel
CP607(-B)	Control panel, TFT graphical display, touchscreen, 7", 800 x 480 pixel
CP610(-B)	Control panel, TFT graphical display, touchscreen, 10.1", 1024 x 600 pixel
CP6605	Control Panel, TFT graphical display, multi-touchscreen, 5", 800 x 480 pixel
CP6607	Control Panel, TFT graphical display, multi-touchscreen, 7", 800 x 480 pixel
CP6610	Control Panel, TFT graphical display, multi-touchscreen, 10.1", 1280 x 800 pixel
CP6615	Control Panel, TFT graphical display, multi-touchscreen, 15.6", 1366 x 768 pixel
CP6621	Control Panel, TFT graphical display, multi-touchscreen, 21.5", 1920 x 1080 pixel

Safety guide

The manual contains safety standards that must be respected for the personal safety and to avoid damage.

Indications of attention are divided into three levels of severity:

DANGER: Indicates a failure to observe safety rules and such failure may cause death or serious injuries.

ATTENTION: Indicates a failure to observe safety rules and that deficiency may cause damage.

CAUTION: Indicates a failure to observe safety rules and that deficiency may cause defects to the equipment or inconsistencies.

1 Before you start

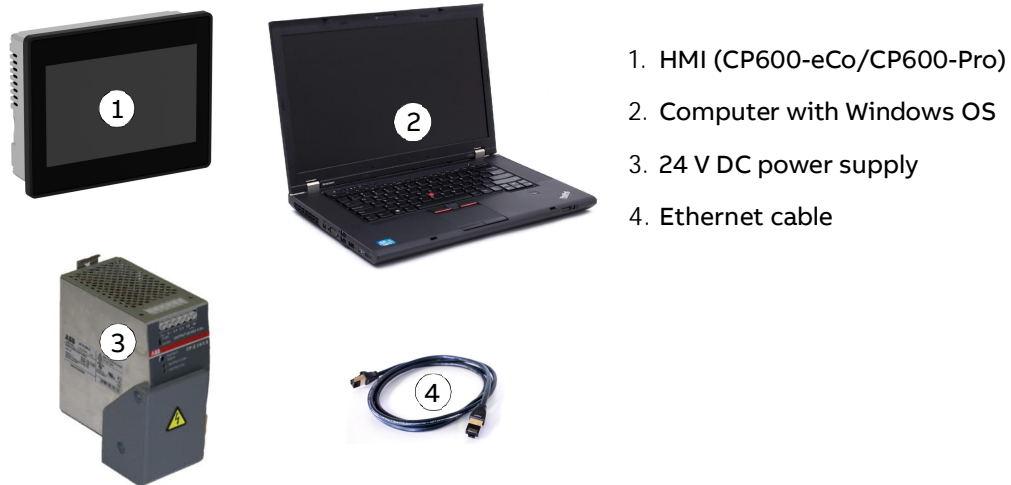
Before you start, please read carefully:

For CP600-eCo: the installation instructions 3ADR010100 and the operating instructions 3ADR059055Mxx01

For CP600-Pro: the installation instructions 3ADR010103, the operating instructions 3ADR010108 and the quick start guide 3ADR010161

2 Hardware connection

Before you start, following equipment should be prepared:



1. HMI (CP600-eCo/CP600-Pro)
2. Computer with Windows OS
3. 24 V DC power supply
4. Ethernet cable

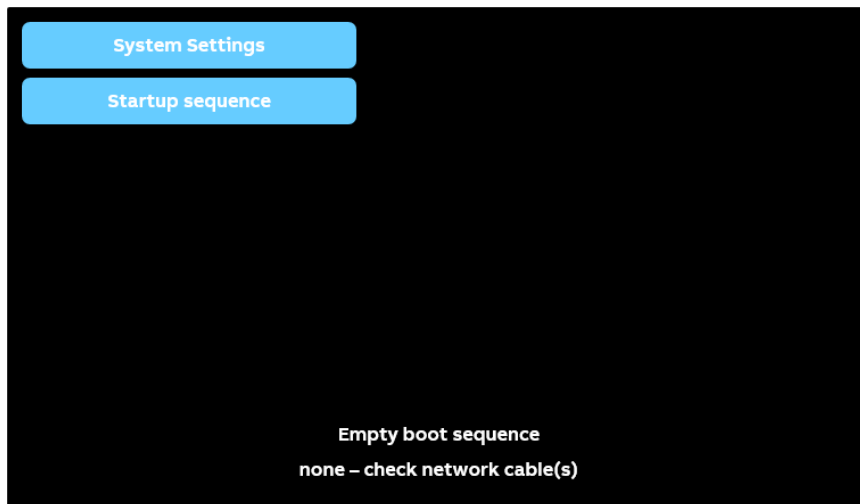
3 Compatibility

Attention: Chromium browser is only available with below versions or better

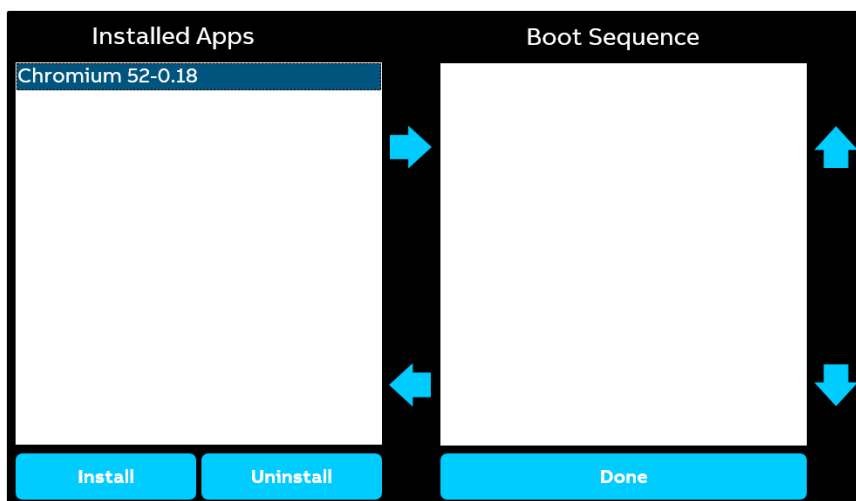
HMI type	BSP version	Hardware version index
CP604(-B)	1.0.307	C1
CP607(-B)	1.0.307	C1
CP610(-B)	1.0.307	C1
CP6605	1.0.298	A0
CP6607	1.0.304	A0
CP6610	1.0.304	A0
CP6615	1.0.304	A0
CP6621	1.0.304	A0

4 Activate Chromium browser as web visualization on a brand new HMI

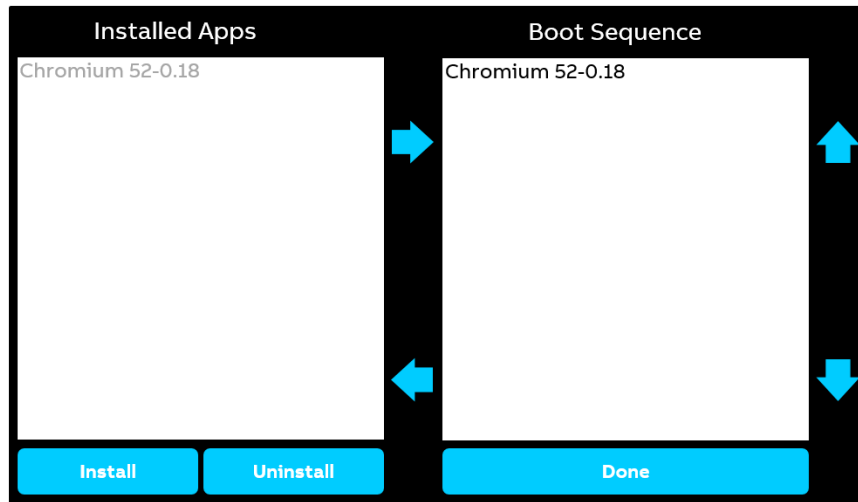
Click on Startup sequence when CP600-eCo/CP600-Pro HMI is powered on for the first time as shown in the figure below.



Chromium web browser is pre-installed on every compatible HMI.

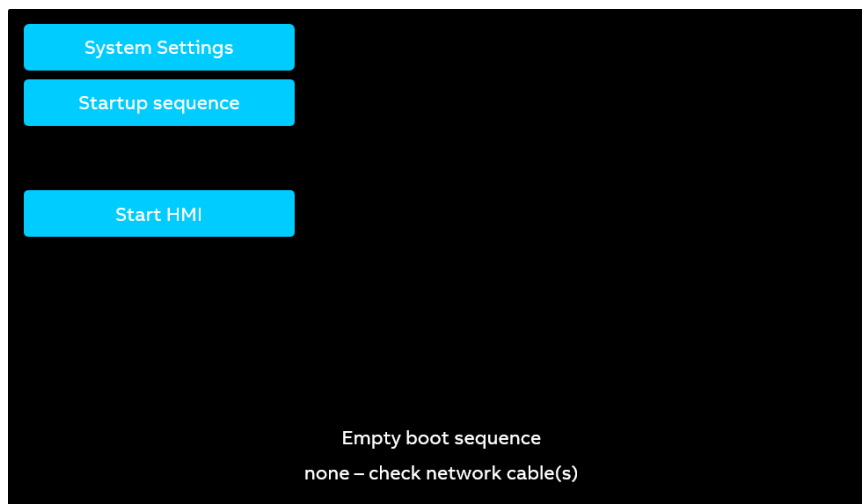


Select and add Chromium browser to the boot sequence, and click Done



ATTENTION: It will create conflicts if both, Chromium browser and HMI runtime, are added in the boot sequence. Please make sure that there is always only one app in the boot sequence. If a new app is needed in the boot sequence, please first remove the existing app from the boot sequence. See [Chapter 5](#), if Chromium browser and HMI runtime are both needed.

Click on Start HMI to load Chromium browser. Loading HMI may take some time, depending on the HMI models.



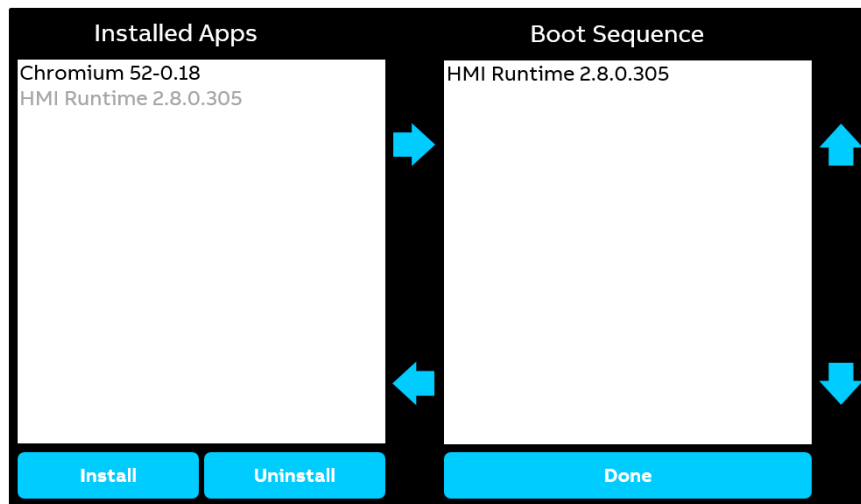
When Chromium browser is first time loaded, a login password is required to come to the setting page. The default Username/Password is admin/admin.

ATTENTION: For easy navigation, it is highly recommended to enable the address bar in the setting page of Chromium browser.

5 Activate Chromium web browser in HMI runtime

To activate Chromium browser in HMI runtime, only HMI runtime shall be installed and added in the boot sequence.

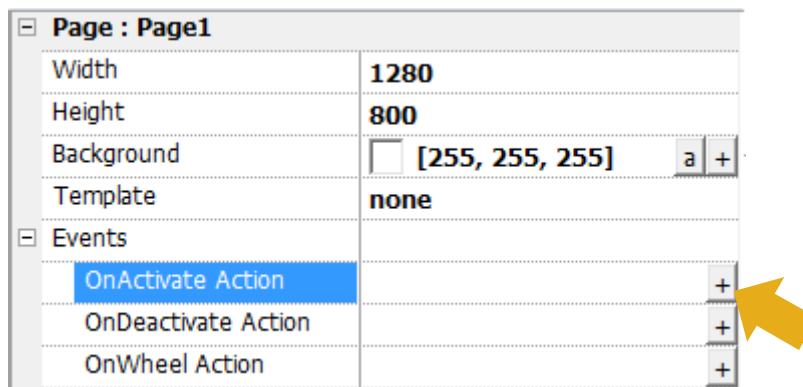
Chromium browser shall be launched via a widget in the PB610 application, but not in the boot sequence.



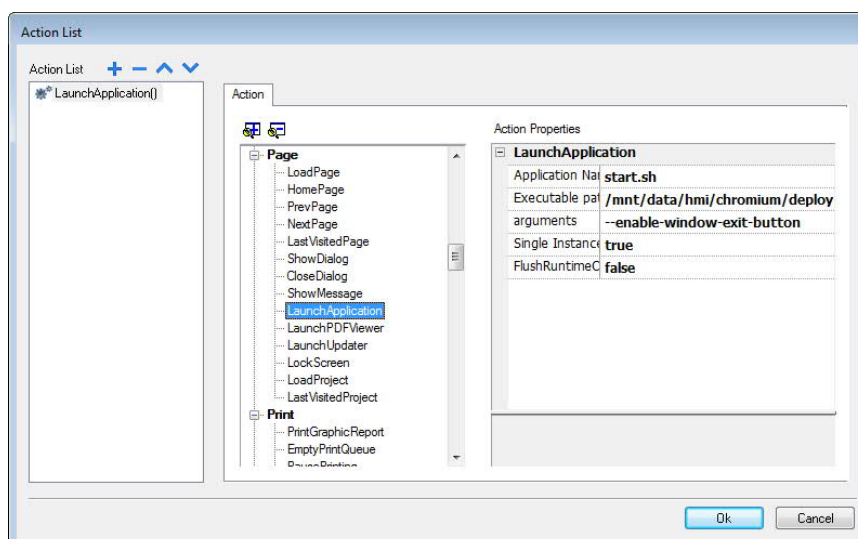
Below example shows the steps to launch Chromium browser via a button clicking.

Select a button from Widget Gallery.

Open the Action list from the button Properties sheet



Click on LaunchApplication under the action group Page.



Edit the Action Properties of LaunchApplication as shown in the table below

LaunchApplication	
Application Name	Start.sh
Executable path	/mnt/data/hmi/chromium/deploy
Arguments	--enable-window-exit-button
Single Instance	true
FlushRuntimeCache	false

More available arguments:

Arguments	Description
--enable-exit-button	Shows the Exit button on the login screen. The button will terminate all chrome processes.
--enable-window-exit-button	Shows the same button as above but now just the browser window is closed. Main Chromium process will remain. Alive and calling start.sh again will just open a new window which should be faster. However changing command line flags will no more override those used the first time, a different URL can still be specified in the command.
--open-options-after-num-retries=<n>	Modify after how many retries on load error the login page is opened (default is 4). A value <1 will disable the feature
--retries-on-error-timeout=<n>	Time in seconds between retries. Minimum accepted value is 5 (default is 8)

Click Ok, and download the project to HMI.

Chromium will then be activated by clicking the button on HMI. Launch of chromium browser during power up of the panel first time takes significant longer than the second launch during operation, depending on the HMI model.