

AWT210 and AWT420 Transmitters



Panel-mount/Pipe-mount and weathershield installation kits

Measurement made easy



1 Introduction

This publication details:

- how to panel-, wall- or pipe-mount the transmitter
- how to wall- or pipe-mount the transmitter with the weathershield

The contents of the installation kits are shown in Tables 1, 2 and 3.

Description	Part no.
Case flange sub-assembly (x 2)	SM500/0056
Panel clamp (x 2)	CM40/0117
Panel clamp screw (x 2)	CM40/0080
Panel seal	CM40/0107
This Information sheet	INF/ANAINST/010-EN

Table 1 Panel-mount kit 3KXA877210L0101

Description	Part no.
Weathershield	3KXA005213U0100
This Information sheet	INF/ANAINST/010-EN

Table 2 Weathershield kit 3KXA877210L0103

Description	Part no.
Pipe-mount adaptor plate	CM40/0112
Bracket (x 2)	SM500/0131
Screw (x 2)	B12476
Washer (x 4)	0225734
Nut (x 2)	0224172
Screw (x 2)	B12478
Screw (x 2)	B12479
Washer (x 2)	B12408
This Information sheet	INF/ANAINST/010-EN

Table 3 Pipe-mount kit 3KXA877210L0102

2 Tools required

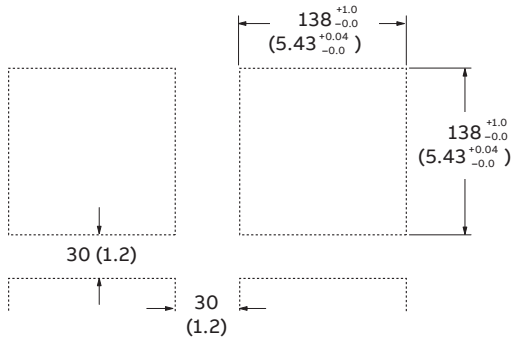
- No.2 Pozidriv screwdriver
- 10 mm open-ended spanner (x 2)

3 Panel-mounting

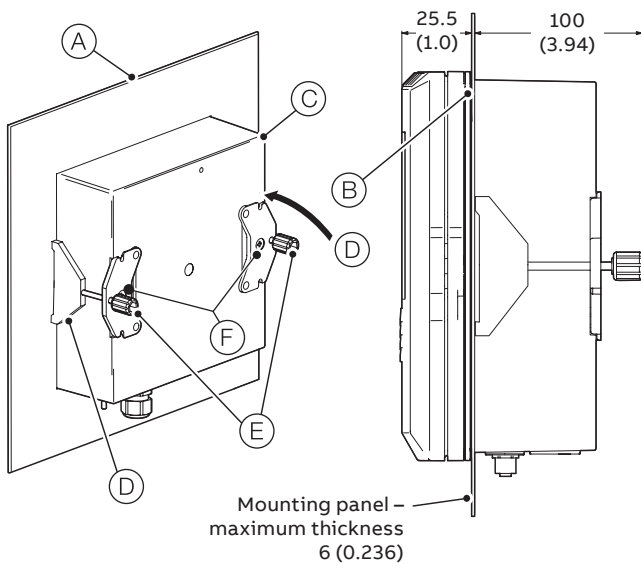
Referring to Figure 1:

- 1 Cut a hole in panel (A) using the dimensions shown.
- 2 Position panel seal (B) on the shoulder around the transmitter cover.
- 3 Insert transmitter (C) into the panel cut-out.
- 4 Position left and right panel clamps (D) each side of the transmitter case, pass panel clamp anchor screws (E) through each bracket and screw into panel clamps – do not tighten.
- 5 Secure brackets to transmitter using bracket screws (F).
- 6 Torque each panel clamp anchor screw (E) to 0.5 to 0.6 N·m (4.42 to 5.31 lbf·in.).

Dimensions in mm (in.)



Panel cut-out dimensions*



*To DIN43700

Figure 1 Panel-mounting the transmitter

4 Wall-mounting with weathershield

Referring to Figure 2:

- 1 Position left- and right-hand mounting brackets (A) into the recesses on the rear of the transmitter as shown and secure with bracket securing screws (B). Ensure the plastic washers remain in the positions fitted.
- 2 Mark fixing centers (C) and drill suitable holes in the wall.
- 3 Position weathershield (D) between the transmitter and wall and secure to the wall using 2 screws in each mounting bracket.

Dimensions in mm (in.)

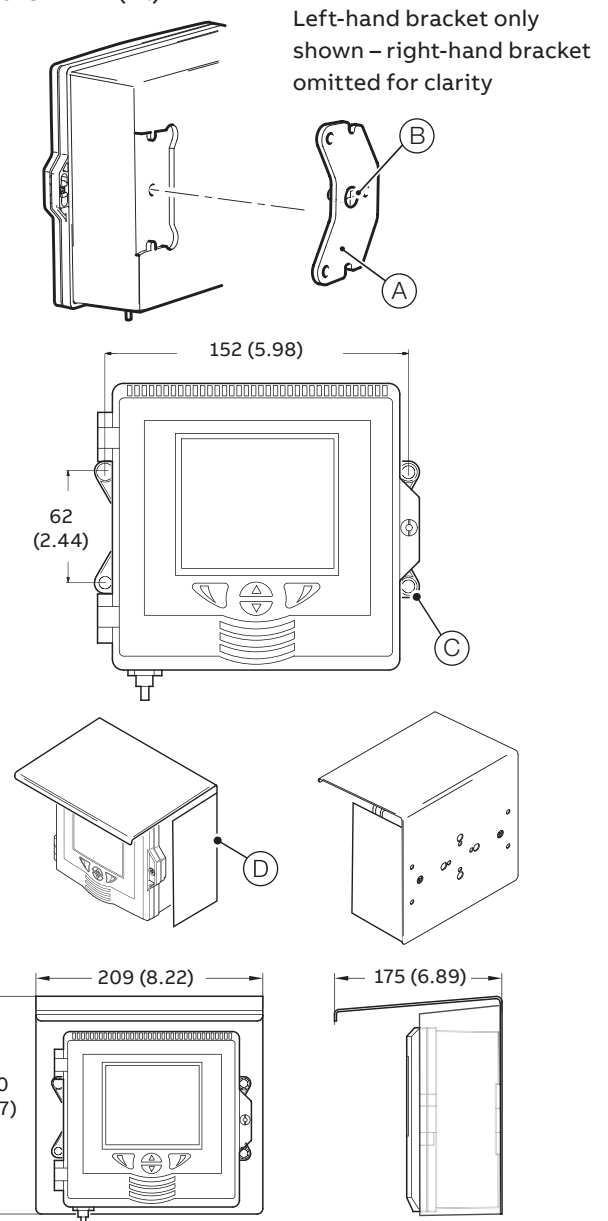


Figure 2 Wall-mounting the transmitter with weathershield

5 Pipe-mounting

Figure 3:

- 1 Fit two M6 x 50 mm long hexagon-head screws (A) through clamp plate (B) as shown.
- 2 Using the appropriate holes to suit a vertical or horizontal pipe, secure clamp plate (B) to pipe-mounting bracket (C) using two M6 x 8 mm long hexagon-head screws (D) and two spring lock washers (E).
- 3 Position pipe mounting bracket (C) into the recesses on the rear of the transmitter as shown and secure with two bracket securing screws (F). Ensure the plastic washers remain in the positions fitted.
- 4 Secure the transmitter to the pipe using remaining clamp plate (G), spring lock washers (H) and nuts (I).
- 5 When using weathershield (K), fit it between clamp plate (B) and pipe mounting bracket (C).

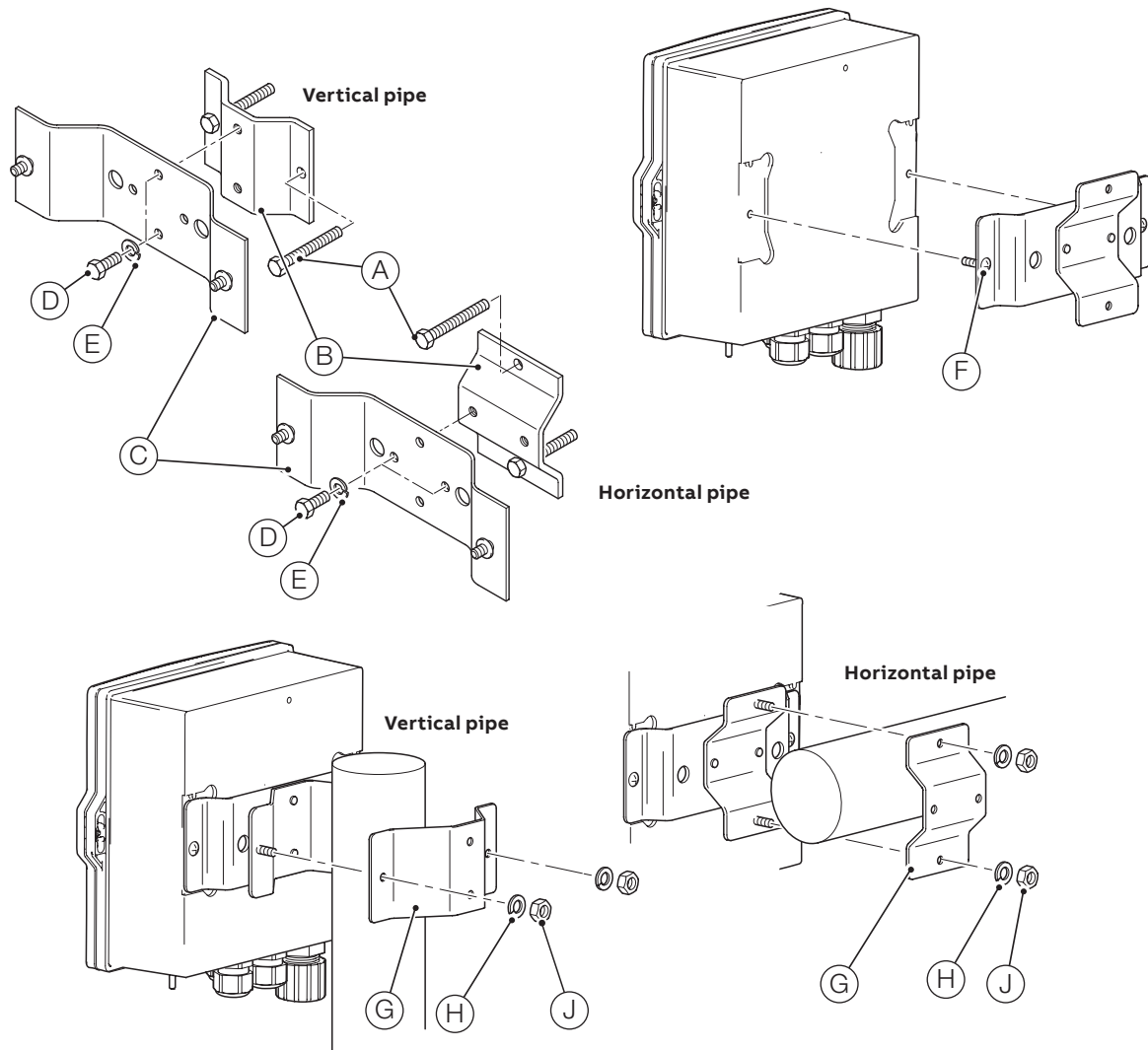


Figure 3 Pipe-mounting the transmitter

ABB Limited**Measurement & Analytics**

Howard Road, St. Neots
Cambridgeshire, PE19 8EU
UK

Tel: +44 (0)870 600 6122

Fax: +44 (0)1480 213 339

Email: enquiries.mp.uk@gb.abb.com

ABB Inc**Measurement & Analytics**

125 E County Line Road
Warminster, PA 18974
USA

Tel: + 1 215 674 6000

Fax: + 1 215 674 7183

abb.com/measurement



We reserve the right to make technical changes or modify the contents of this document without prior notice. With regard to purchase orders, the agreed particulars shall prevail. ABB does not accept any responsibility whatsoever for potential errors or possible lack of information in this document.

We reserve all rights in this document and in the subject matter and illustrations contained therein. Any reproduction, disclosure to third parties or utilization of its contents – in whole or in parts – is forbidden without prior written consent of ABB.