

\*\*\*\*\*

**Welcome at PB610 Panel Builder 600**  
**Protocol “Mitsubishi iQ/Q/L ETH”**

\*\*\*\*\*

This README-file contains important information about Protocol “Mitsubishi iQ/Q/L ETH” for PB610 Panel Builder 600 V2.8.x.x.

Please, read the whole document, in order to get the newest information.

## Main Features of PB610-V2.8-MIQE147

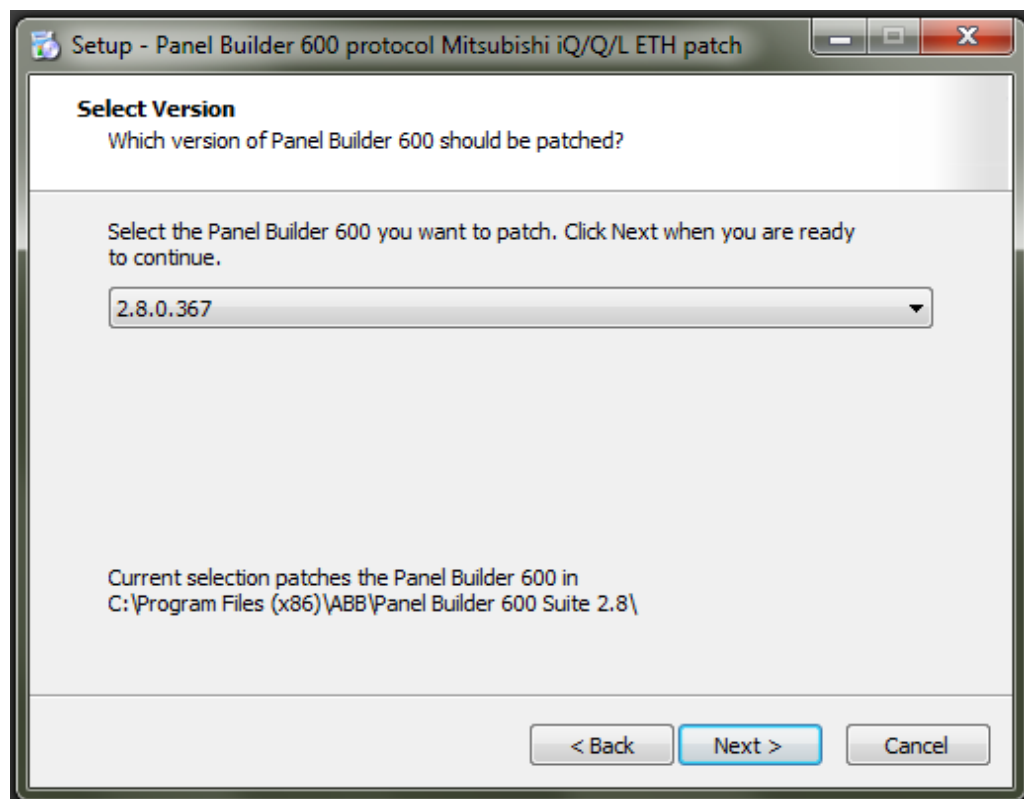
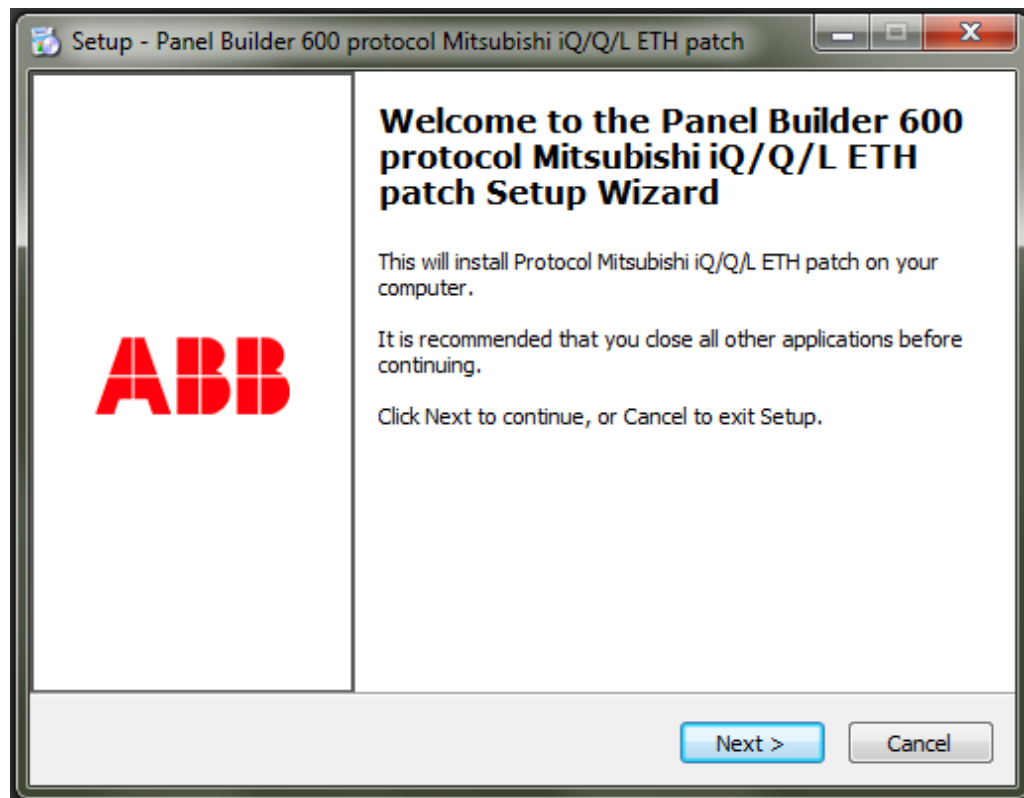
- PB610-V2.8-MIQE147.exe is an executable file, that adds Mitsubishi iQ/Q/L ETH protocol to an existing PB610 Panel Builder 600 installation, version V2.8.x.x
- Mitsubishi iQ/Q/L ETH protocol does support the communication to the following control systems: Mitsubishi iQ/Q/L ETH PLCs.

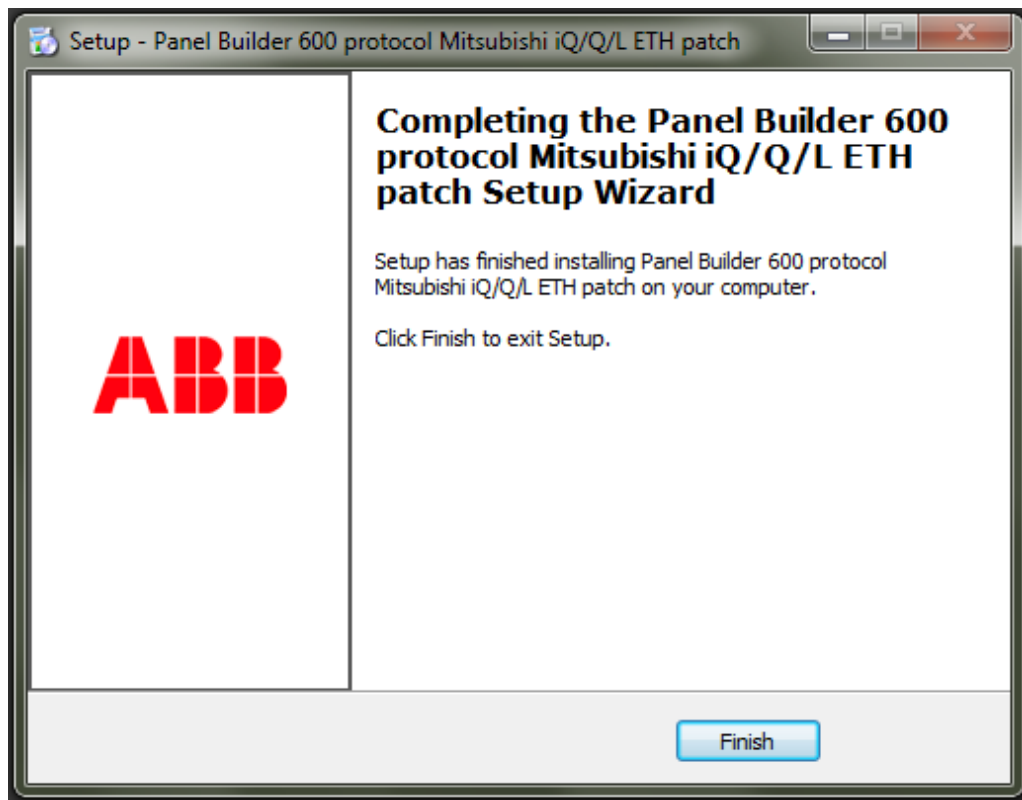
## Requirements

- A PB610 Panel Builder 600 installation, version V2.8.x.x has to be available on the PC and has to be OFF.
- This protocol is supported by following CP600 control panels:
  - CP604, CP604-B, CP607, CP607-B, CP610, CP610-B starting from A0
  - CP620, C630, CP635, CP635-B starting from index H3
  - CP651, CP661, CP665, CP676 starting from index C3
  - CP6605, CP6607, CP6610, CP6615, CP6621 from index A0The support of the protocols for control panels is enabled during production process in the factory. It cannot be enabled later on.

## Installation

- When executing this file, PB610 V2.8.x.x installations in the PC are checked and user is asked to select the version, he wants to add the protocol to.  
Setup:





- When installation is completed, the protocol will be available in PB610 engineering tool including online help