
Welcome at PB610 Panel Builder 600
Protocol “Simatic S7ETH”

This README-file contains important information about Protocol “Simatic S7 ETH” for PB610 Panel Builder 600 V2.8.x.x.

Please, read the whole document, in order to get the newest information.

Main Features of PB610-V2.8-S7ET167

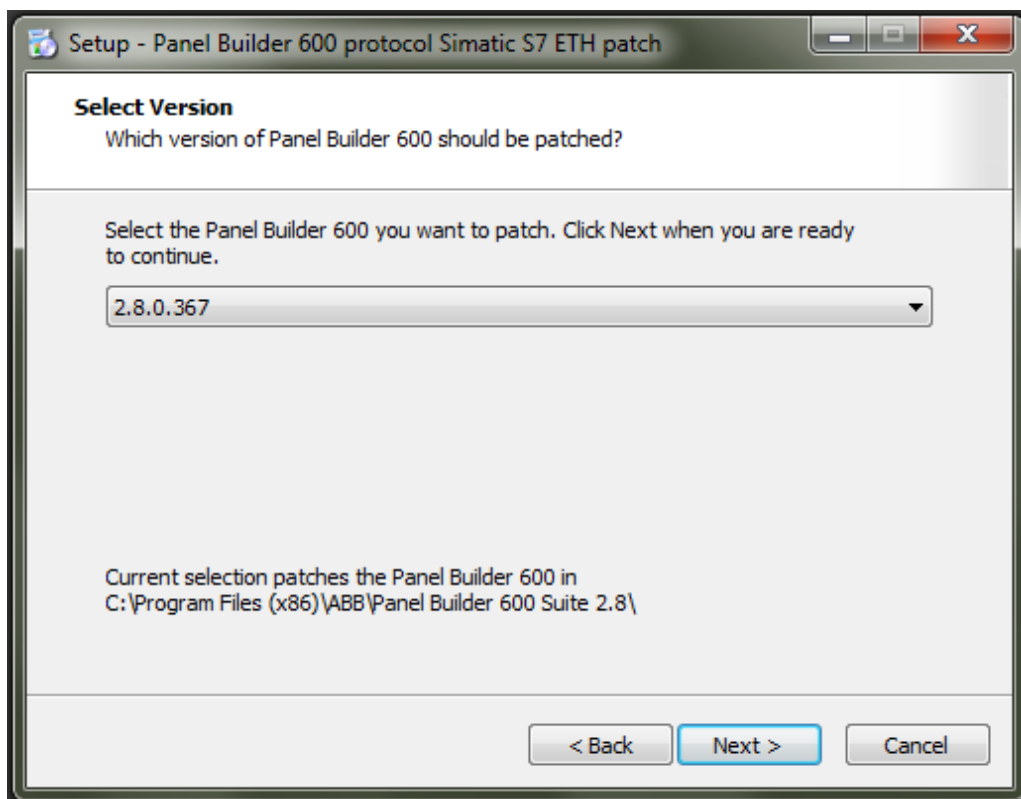
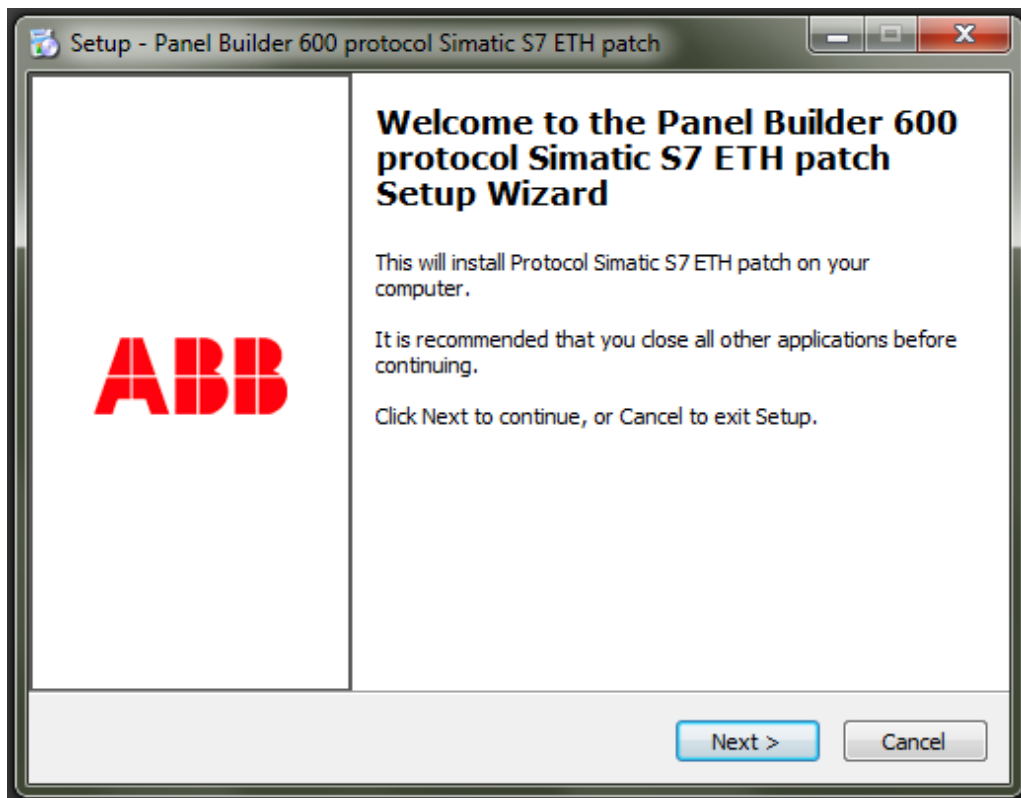
- PB610-V2.8-S7ET167.exe is an executable file, that adds Simatic S7 ETH protocol to an existing PB610 Panel Builder 600 installation, version V2.8.x.x
- Simatic S7 ETH protocol does support the communication to the following control systems:
 - S7-300, S7-313/314/315, S7-315-2DP, S7-318-2DP, S7-319-3PN DP
 - S7-412, S7-413, S7-414, S7-416, S7-417,
 - S7-1200 CPU 1211 / 1212, S7-1200 CPU 1214 / 1215
 - S7-1500 CPU 15xx
 - LOGO! 0BA7
 - ET200S IM151

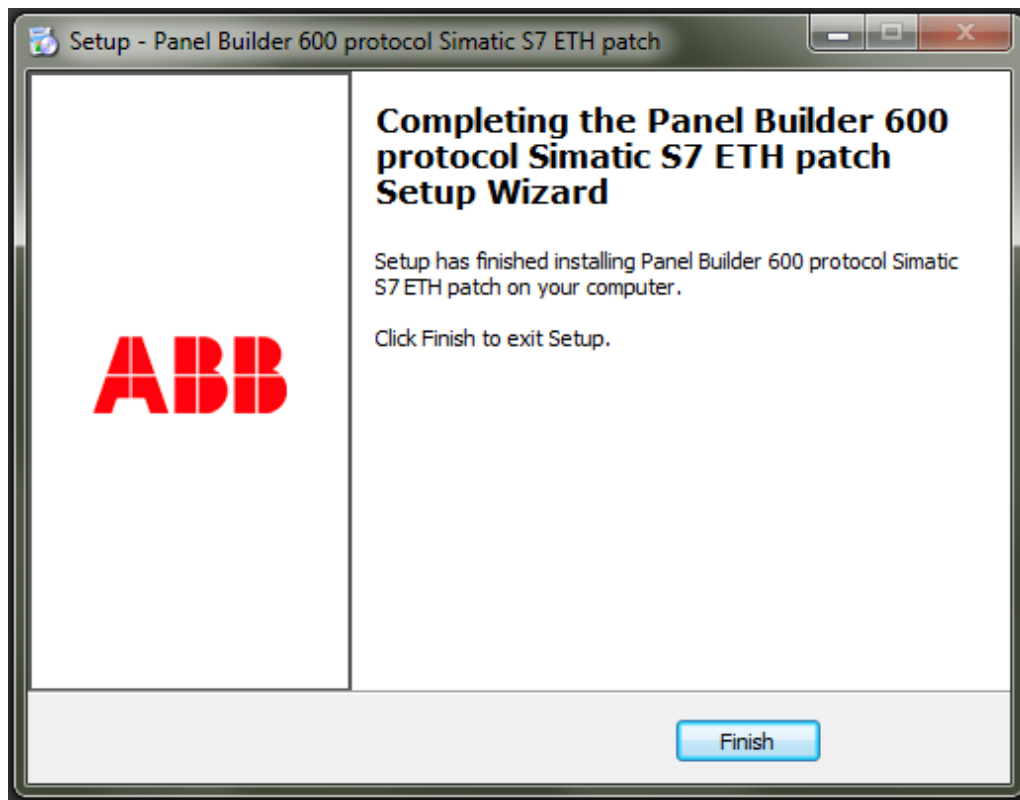
Requirements

- A PB610 Panel Builder 600 installation, version V2.8.x.x has to be available on the PC and has to be OFF.
- This protocol is supported by following CP600 control panels:
 - CP604, CP604-B, CP607, CP607-B, CP610, CP610-B starting from A0
 - CP620, C630, CP635, CP635-B starting from index C3
 - CP651, CP661, CP665, CP676 starting from index A0
 - CP6605, CP6607, CP6610, CP6615, CP6621 from index A0The support of the protocols for control panels is enabled during production process in the factory. It cannot be enabled later on.

Installation

- When executing this file, PB610 V2.8.x.x installations in the PC are checked and user is asked to select the version, he wants to add the protocol to.
Setup:





- When installation is completed, the protocol will be available in PB610 engineering tool including online help